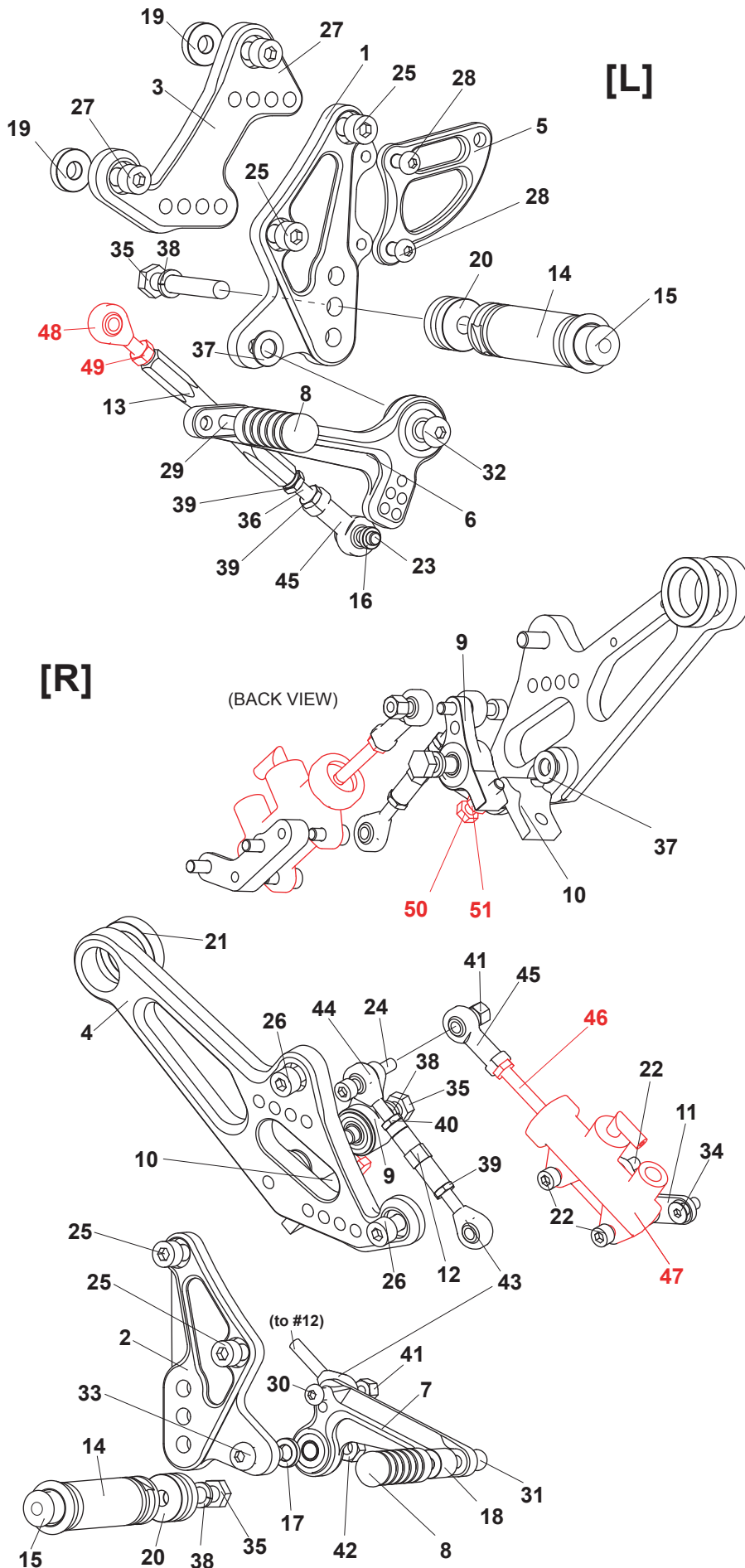


DUCATI DIAVEL ('11-'16) REAR SETS

part# D-DLRS



1. (L) STEP PLATE [D-DLSP-L]
2. (R) STEP PLATE [D-DLSP-R]
3. (L) BASE PLATE(BK) [D-DLBP-L]
4. (R) BASE PLATE(BK) [D-DLBP-R]
5. (L) HEEL GUARD [HG-11L]
6. SHIFT PEDAL SCP65-75 [SPD-0912]
7. BRAKE PEDAL SSBP285 [BPD-18]
8. PEDAL TIP (DELRIN) [ST-001D] x2
9. BRAKE LINK(BK) [BL-D2]
10. BRAKE SWITCH BASE [D-DLSB]
11. MASTER BASE (BK) [D-DLMB]
12. SHIFT ROD 40(BK) [SRD-40B]
13. SHIFT ROD 100 [SRD-100]
14. FOOT PEG [PEG] x2
15. FOOT PEG END CAP [ST-002] x2
16. ROD END COLLAR 3(GD) [RDED-CLR3]
17. COLLAR 3-8 (BK) [CLR3-8]
18. COLLAR 15-6 (BK) [HGCLR-15]
19. BASE PLATE COLLAR 5(BK) [BPCLR-5] x2
20. FOOT PEG COLLAR 15 [PEGCLR-15] x2
21. COLLAR 8-25 [CLR-8-25DL]
22. SOCKET HEAD M6-15mm [SBT-M615] x3
23. SOCKET HEAD M6-20mm [SBT-M620]
24. SOCKET HEAD M6-35mm [SBT-M635]
25. SOCKET HEAD M8-15mm [SBT-M815] x4
26. SOCKET HEAD M8-20mm [SBT-M820] x2
27. SOCKET HEAD M8-25mm [SBT-M825] x2
28. BUTTON HEAD M6-10mm [BBT-M610] x2
29. BUTTON HEAD M6-20mm [BBT-M620]
30. BUTTON HEAD M6-25mm [BBT-M625]
31. BUTTON HEAD M6-35mm [BBT-M635]
32. BUTTON HEAD M8-25mm [BBT-M825]
33. BUTTON HEAD M8-30mm [BBT-M830]
34. FLAT HEAD M6-15mm [FBT-M615]
35. HEX BOLT M8-40mm [HBT-M840] x2
36. STUD M6 [STUD-M6]
37. PEG WASHER M8 [PWS-8] x2
38. SPLIT WASHER M8 [SWS-8] x3
39. JAM NUT M6 [JNT-6] x3
40. REVERSE JAM NUT M6 [JNT-6L]
41. LOCK NUT M6 [LNT-6]
42. NUT M8 [NUT-8]
43. MALE ROD END M6 [RDED-M6]
44. MALE REVERSE ROD END M6 [RDED-M6L]
45. FEMALE ROD END M6 [RDED-F6] x2

STOCK DUCATI PARTS -

- 46. PUSH ROD**
- 47. MASTER CYLINDER**
- 48. ROD END (REVERSE THREADED)**
- 49. NUT M6 (REVERSE THREADED)**
- 50. BOLT**
- 51. NUT**

POSITIONS		
1	30mm Back	0 mm Up
2	30mm Back	14mm Up
3	30mm Back	28mm Up
4	40mm Back	0 mm Up
5	40mm Back	14mm Up
6	40mm Back	28mm Up
7	50mm Back	0 mm Up
8	50mm Back	14mm Up
9	50mm Back	28mm Up
10	60mm Back	0mm Up
11	60mm Back	14mm Up
12	60mm Back	28mm Up

note: all measurements are in relation to stock position (0 mm).