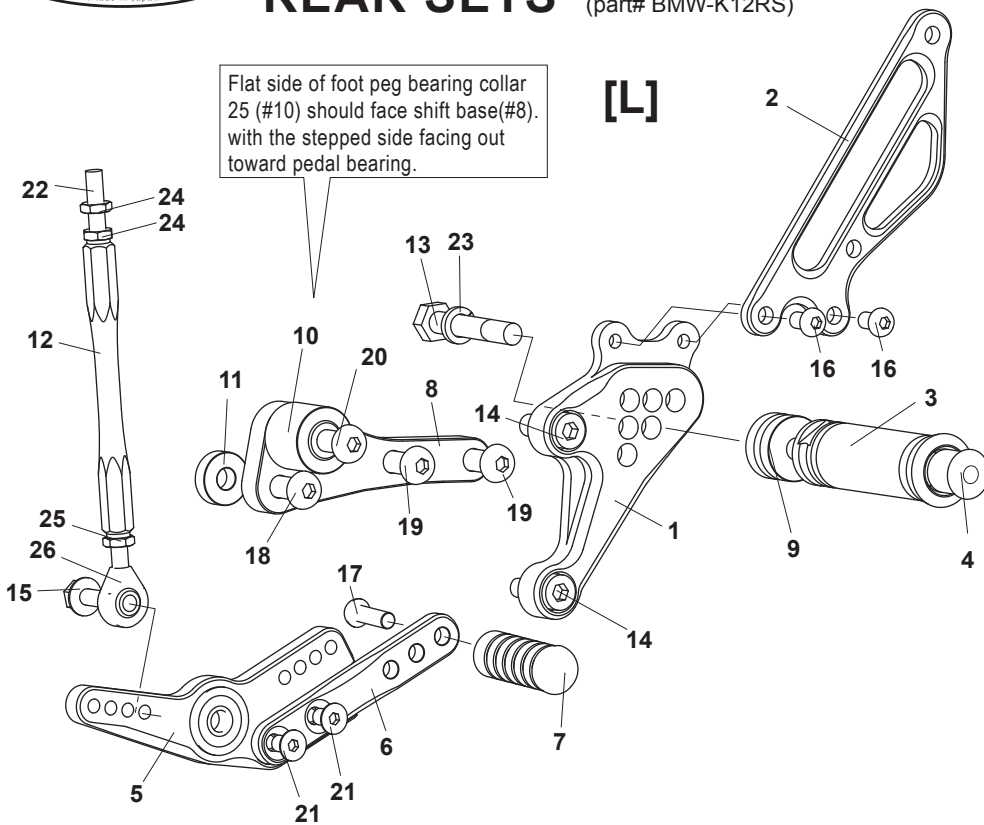


BMW K1200R ('05-'08) REAR SETS (part# BMW-K12RS)

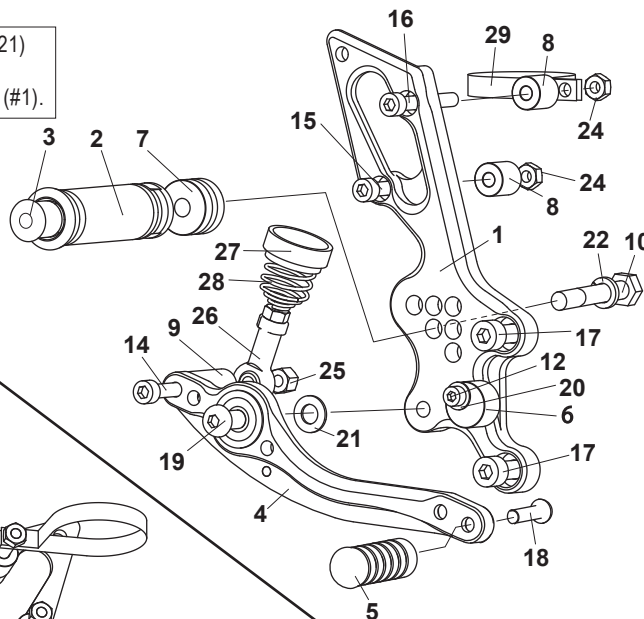


[L]-SIDE

1. (L) STEP PLATE [BMW-K12SP-L]
2. (L) HEEL GUARD [HG-17L]
3. FOOT PEG [PEG]
4. FOOT PEG END CAP [ST-002]
5. SHIFT PEDAL SPD13 (BK) [SPD-13]
6. SHIFT PEDAL SPD8 (BK) [SPD-8]
7. PEDAL TIP (DELRIN) [ST-001D]
8. SHIFT BASE(BK) [SB-BMW1]
9. FOOT PEG COLLAR 15 [PEGCLR-15]
10. BEARING COLLAR 25(BK) [BGCLR-25]
11. BASE PLATE COLLAR 6(BK) [BPCLR-6]
12. SHIFT ROD 110(BK) [SRD-110B]
13. HEX HEAD M8×40mm [HBT-M840]
14. SOCKET HEAD M8×20mm [SBT-M825] (x2)
15. FLANGE HEAD M6×20mm [FGBT-M620]
16. BUTTON HEAD M6×10mm [BBT-M610] (x2)
17. BUTTON HEAD M6×20mm [BBT-M620]
18. BUTTON HEAD M8×25mm [BBT-M825]
19. BUTTON HEAD M8×40mm [BBT-M840] (x2)
20. BUTTON HEAD M8×45mm [BBT-M845]
21. FLAT HEAD M6×10mm [FBT-M610] (x2)
22. REVERSE STUD M6 [STUD-M6L]
23. SPLIT WASHER M8 [SWS-8]
24. REVERSE JAM NUT M6 [JNT-6L] (x2)
25. JAM NUT M6 [JNT-6]
26. MALE ROD END M6 [RDED-M6]

[R] (Use stock mechanical brake light switch)

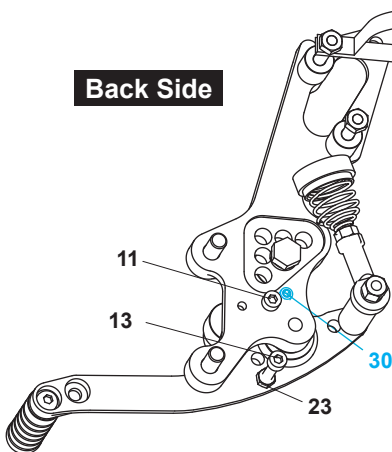
Smooth front of PEG WASHER M8 (#21) should face pedal bearing, with the rougher, flat side facing STEP PLATE (#1).



[R]-SIDE

1. (R) STEP PLATE [BMW-K12SP-R]
2. FOOT PEG [PEG]
3. FOOT PEG END CAP [ST-002]
4. BRAKE PEDAL [BPD2]
5. PEDAL TIP (DELRIN) [ST-001D]
6. BRAKE PEDAL STOPPER (DELRIN)
7. FOOT PEG COLLAR 15 [PEGCLR-15]
8. COLLAR 15-6(BK) [CLR-15-6] (x2)
9. COLLAR 30-6(BK) [CLR-30-6]
10. HEX HEAD M8×40mm [HBT-M840]
11. SOCKET HEAD M5×5mm [SBT-M505]
12. SOCKET HEAD M5×20mm [SBT-M520]
13. SOCKET HEAD M5×25mm [SBT-M525]
14. SOCKET HEAD M6×55mm [SBT-M655]
15. SOCKET HEAD M6×40mm [SBT-M640]
16. SOCKET HEAD M6×45mm [SBT-M645]
17. SOCKET HEAD M8×20mm [SBT-M820] (x2)
18. BUTTON HEAD M6×20mm [BBT-M620]
19. BUTTON HEAD M8×25mm [BBT-M825]
20. PLAIN WASHER M5 [WS-5]
21. PEG WASHER M8 [PWS-8]
22. SPLIT WASHER M8 [SWS-8]
23. PLAIN NUT M5 [NUT-5]
24. PLAIN NUT M6 [NUT-6] (x2)
25. LOCK NUT M6 [LNT-6]
26. FEMALE ROD END M6 [RDED-F6]
27. RETURN SPRING COLLAR (DELRIN)
28. RETURN SPRING 40 [RS-RSP]
29. CYLINDER CUP CLAMP(SV)
- ★ 30. SET SCREW M6×12mm(STOCK)

Back Side



POSITIONS

1	0 mm	0 mm
2	0 mm	10mm Up
3	0 mm	20mm Up
4	10mm Back	10mm Up
5	10mm Back	20mm Up
6	20mm Back	20mm Up

note: all measurements are in relation to stock position (0mm)

Due to running improvements in the designs of Sato parts, some new replacement parts may look somewhat different than the original parts with the same part #. These slight differences are mostly cosmetic and have no effect on performance.