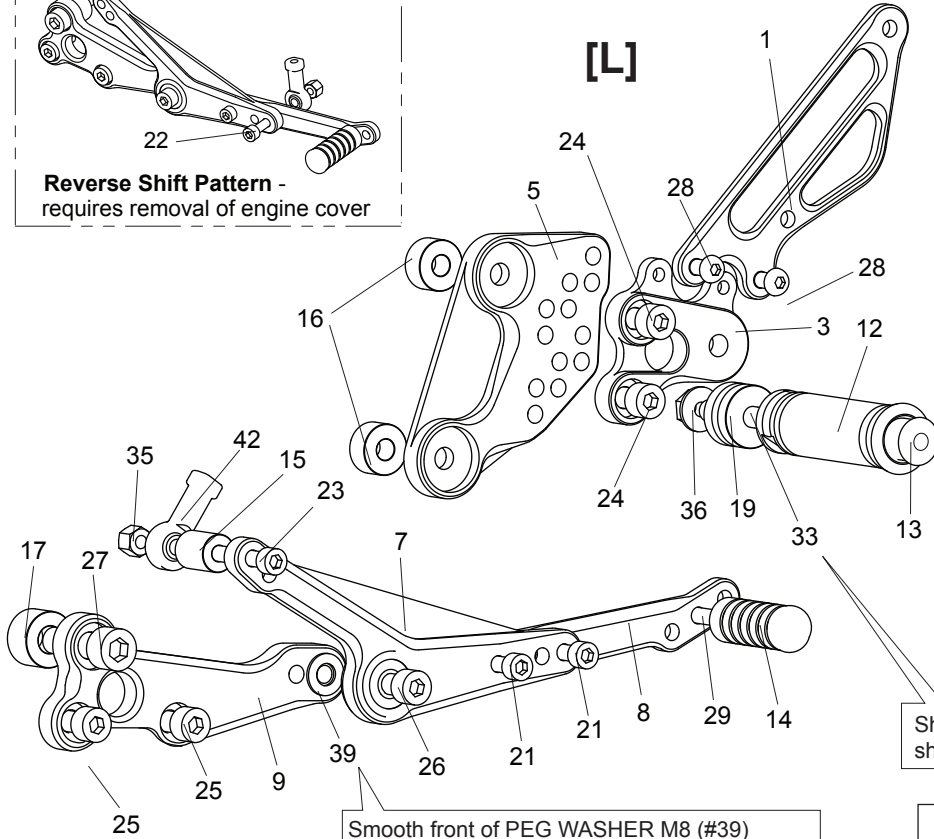
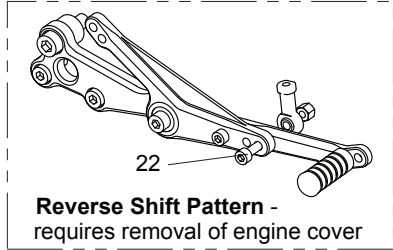


SUZUKI GSX1250 (BANDIT 1250) ('07-'11 non-ABS) REAR SETS (part# S-B1250RS)



[L]-SIDE

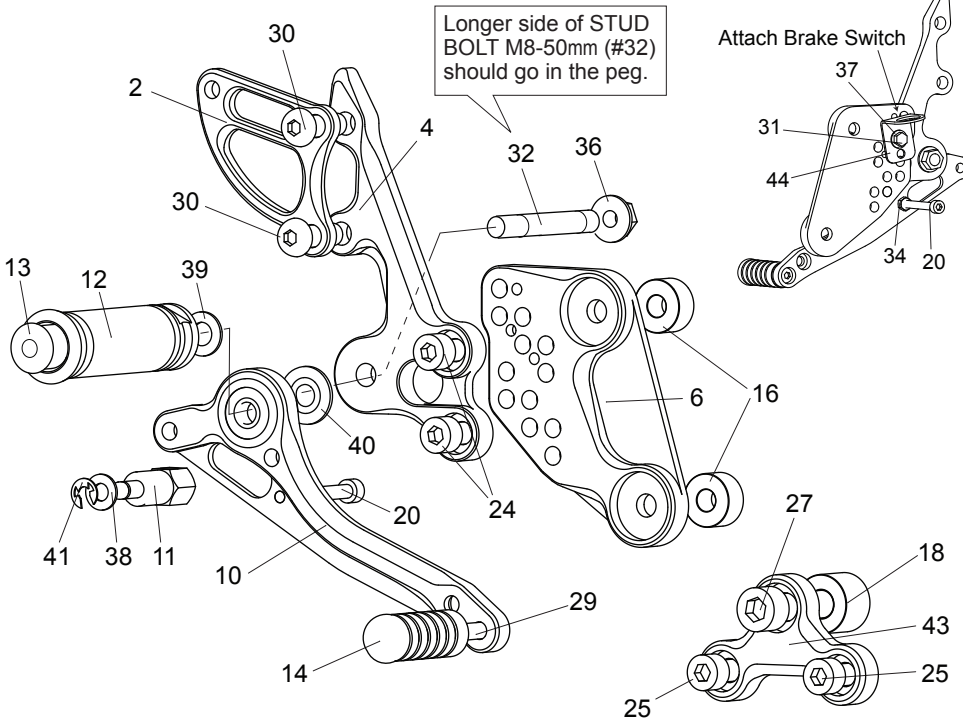
1. (L) HEEL GUARD [HG-17L]
3. (L) STEP PLATE
5. (L) BASE PLATE
7. SHIFT PEDAL1(BK) [SPD-B1250-1]
8. SHIFT PEDAL 2(BK) [SPD-B1250-2]
9. SHIFT BASE (BK)
12. FOOT PEG [PEG]
13. FOOT PEG END CAP [ST-002]
14. PEDAL TIP (DELTRIN) [ST-001D]
15. ROD END COLLAR 19(BK) [RDED-CLR19]
16. BASE PLATE COLLAR 10(BK) [BPCLR-10] x2
17. COLLAR 13-10(BK) [CLR-13-10]
19. FOOT PEG COLLAR 15 [PEGCLR-15]
21. SOCKET HEAD M6-15mm [SBT-M615] x2
22. SOCKET HEAD M6-30mm [SBT-M630]
23. SOCKET HEAD M6-45mm [SBT-M645]
24. SOCKET HEAD M8-15mm [SBT-M815] x2
25. SOCKET HEAD M8-20mm [SBT-M820] x2
26. SOCKET HEAD M8-25mm [SBT-M825]
27. SOCKET HEAD M10-35mm [SBT-M1035]
28. BUTTON HEAD M6-10mm [BBT-M610] x2
29. BUTTON HEAD M6-20mm [BBT-M620]
33. STUD M8-50mm [STBT-50]
35. LOCK NUT M6 [LNT-6]
36. FLANGE NUT M8 [FNT-8]
39. PEG WASHER M8 [PWS-8]
42. FEMALE REVERSE ROD END M6 [RDED-F6L]

Shorter side of STUD BOLT M8-50mm (#33) should go in the peg.

Smooth front of PEG WASHER M8 (#39) should face SHIFT BASE (#9), with the rougher, flat side facing out toward pedal bearing.

Due to running improvements in the designs of Sato parts, some new replacement parts may look somewhat different than the original parts with the same part #. These slight differences are mostly cosmetic and have no effect on performance.

[R] (Use stock brake light switch)



[R]-SIDE

2. (R) HEEL GUARD [HG-11R]
4. (R) STEP PLATE
6. (R) BASE PLATE
10. BRAKE PEDAL [BPD-19]
11. BRAKE ROD M40 [BRD-40]
12. FOOT PEG [PEG]
13. FOOT PEG END CAP [ST-002]
14. PEDAL TIP (DELTRIN) [ST-001D]
16. BASE PLATE COLLAR 10(BK) x2
18. COLLAR 16-10(BK) [CLR-16-10]
20. SOCKET HEAD M5-45mm [SBT-M545]
24. SOCKET HEAD M8-15mm [SBT-M815] x2
25. SOCKET HEAD M8-20mm [SBT-M820] x2
27. SOCKET HEAD M10-35mm [SBT-M1035]
29. BUTTON HEAD M6-20mm [BBT-M620]
30. BUTTON HEAD M8-25mm [BBT-M825] x2
31. HEX HEAD M5-8mm [SBT-M58]
32. STUD M8-50mm [SBT-50]
34. NUT M5 [NUT-5]
36. FLANGE NUT M8 [FNT-8]
37. WASHER M5 [WS-5]
38. WASHER M6 [WS-6]
39. PEG WASHER M8 [PWS-8]
40. BEARING COLLAR SUS [BGCLR-SUS]
41. E-CLIP [ECP-6]
43. (R) ENGINE MOUNT (BK)
44. PULL SWITCH STAY 16 [PSTAY-16]

Flat side of BEARING COLLAR SUS (#40) should face STEP PLATE (#4), with the rounded side facing out toward pedal bearing.

[R] Engine Mount