

[L]

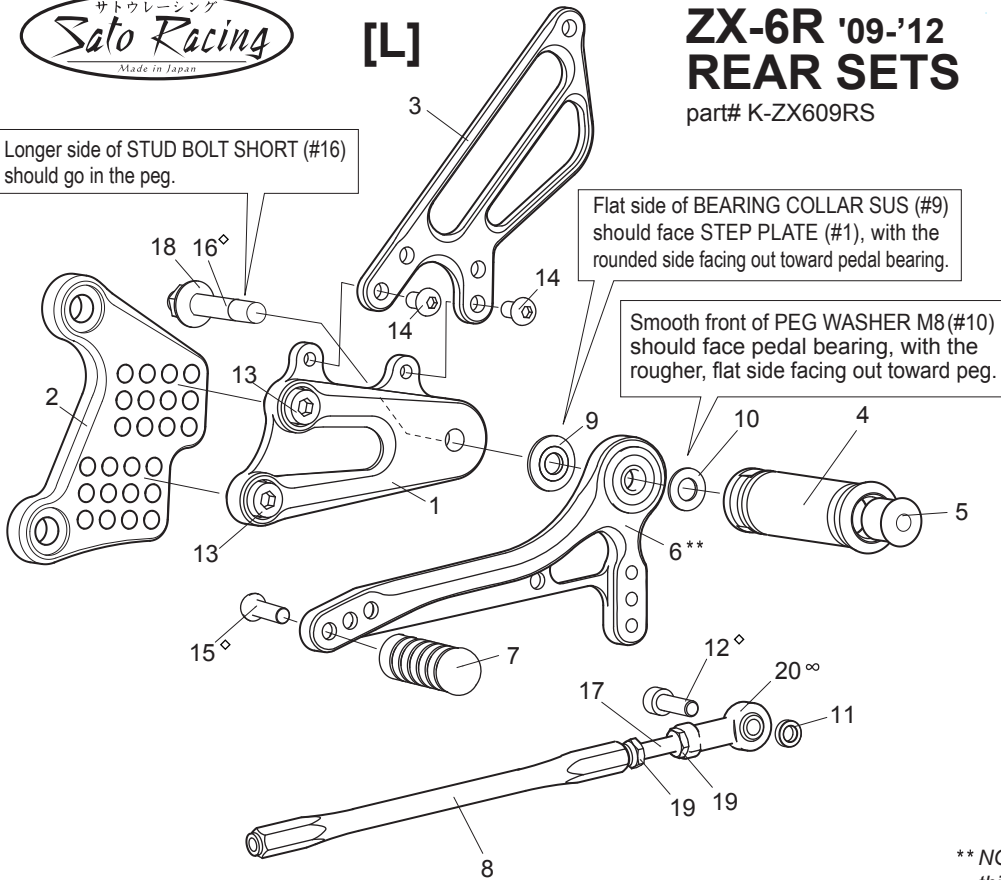
ZX-6R '09-'12 REAR SETS

part# K-ZX609RS

Longer side of STUD BOLT SHORT (#16)
should go in the peg.

Flat side of BEARING COLLAR SUS (#9)
should face STEP PLATE (#1), with the
rounded side facing out toward pedal bearing.

Smooth front of PEG WASHER M8 (#10)
should face pedal bearing, with the
rougner, flat side facing out toward peg.



※ADJUST THE STOCK CHANGE ARM WHEN INSTALLING SATO REAR SETS.

[L] SIDE

1. (L) STEP PLATE [K-ZX609SP-L]
2. (L) BASE PLATE [K-ZX609BP-L]
3. (L) HEEL GUARD [HG-3L]
4. FOOT PEG [PEG]
5. FOOT PEG END CAP [ST-002]
6. SHIFT PEDAL 70 [SPD-2]
7. PEDAL TIP (DELRIN) [ST-001D]
8. SHIFT ROD 170 [SRD-170]
9. BEARING COLLAR SUS [BGCLR-SUS]
10. PEG WASHER M8 [PWS-8]
11. ROD END COLLAR 3(GD) [RDED-CLR3]
12. SOCKET HEAD M6×20mm [SBT-M620]
13. SOCKET HEAD M8×15mm [SBT-M815] ×2
14. BUTTON HEAD M6×10mm [BBT-M610] ×2
15. BUTTON HEAD M6×20mm [BBT-M620]
16. STUD BOLT SHORT (M8x55) [STBT-S]
17. STUD M6 [STUD-M6]
18. FLANGE NUT M8 [FNT-8]
19. JAM NUT M6 [JNT-6] ×2
20. FEMALE ROD END M6 [RDED-F6]
- * 21. SOCKET HEAD M6×30mm [SBT-M630]
- * 22. PLAIN NUT M6 [NUT-6]

*(FOR REVERSE SHIFT)

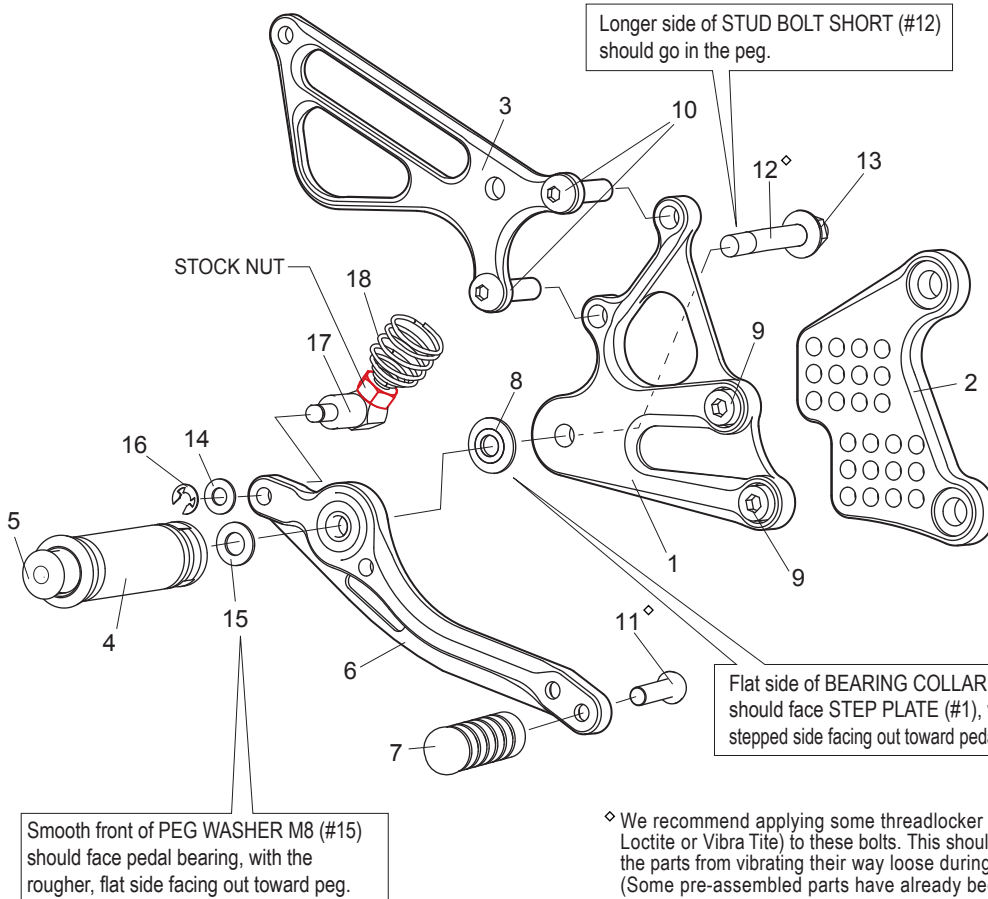
** NOTE: The Shift Pedal design has been updated since this model was introduced, so if you get a replacement pedal, it may look somewhat different than the one that originally came with these Rear Sets.

[R]

P-1.25 brake light switch included.

Longer side of STUD BOLT SHORT (#12)
should go in the peg.

Flat side of BEARING COLLAR SUS (#8)
should face STEP PLATE (#1), with the
stepped side facing out toward pedal bearing.



Smooth front of PEG WASHER M8 (#15)
should face pedal bearing, with the
rougner, flat side facing out toward peg.

◇ We recommend applying some threadlocker (such as Loctite or Vibra Tite) to these bolts. This should help prevent the parts from vibrating their way loose during a ride. (Some pre-assembled parts have already been Loctite'd)

∞ Lubricate rod end regularly

[R] SIDE

1. (R) STEP PLATE [K-ZX609SP-R]
2. (R) BASE PLATE [K-ZX609BP-R]
3. (R) HEEL GUARD [HG-18R]
4. FOOT PEG [PEG]
5. FOOT PEG END CAP [ST-002]
6. BRAKE PEDAL 165 [BPD-3]
7. PEDAL TIP (DELRIN) [ST-001D]
8. BEARING COLLAR SUS [BGCLR-SUS]
9. SOCKET HEAD M8×15mm [SBT-M815] ×2
10. BUTTON HEAD M8×30mm [BBT-M830] ×2
11. BUTTON HEAD M6×20mm [BBT-M620]
12. STUD BOLT SHORT (M8x55) [STBT-S]
13. FLANGE NUT M8 [FNT-8]
14. PLAIN WASHER M6 [WS-6]
15. PEG WASHER M8 [PWS-8]
16. E CLIP M6 [ECP-6]
17. BRAKE ROD M40 [BRD-M40]
18. RETURN SPRING(OPTION) [RS-RSP]

