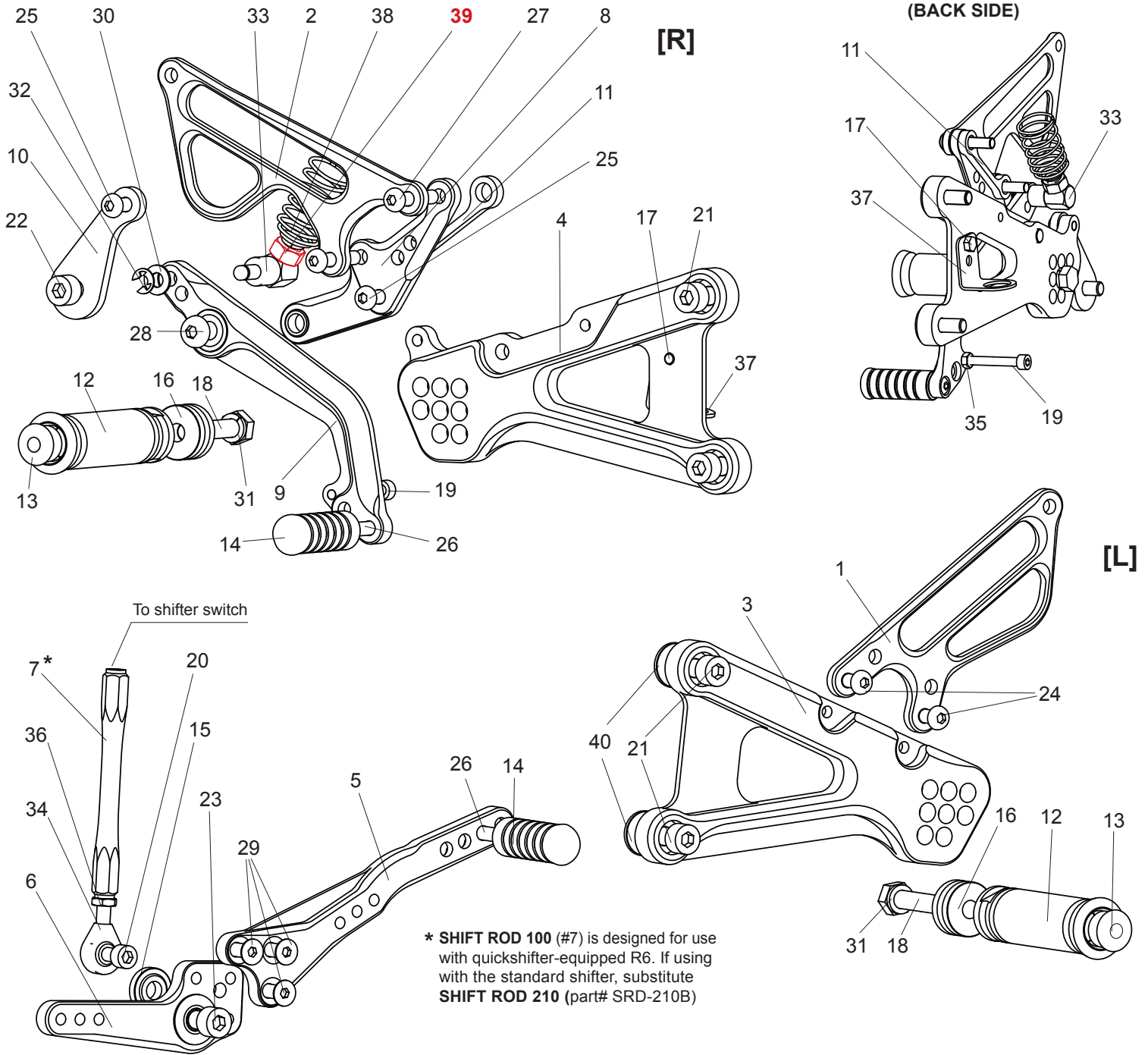


YAMAHA YZF-R6 ('17-) REAR SETS (for quick-shifter)

part# Y-R617RS



* **SHIFT ROD 100 (#7)** is designed for use with quickshifter-equipped R6. If using with the standard shifter, substitute **SHIFT ROD 210** (part# SRD-210B)

- | | | |
|---|--|---|
| <ul style="list-style-type: none"> 1. (L) HEEL GUARD [HG-3L] 2. (R) HEEL GUARD [HG-12R] 3. (L) STEP PLATE [Y-R617SP-L] 4. (R) STEP PLATE [Y-R617SP-R] 5. SHIFT PEDAL (BK) [SPD-YR617] 6. SHIFT BASE (BK) [SB-YR617] * 7. SHIFT ROD 100 (BK) [SRD-100B] 8. MASTER STAY (BK) [Y-R617MS] 9. BRAKE PEDAL [BPD-8-2] 10. CANISTER HANGER (BK) [CANBT-YR606] 11. STAY (BK) [STAY-YR617] 12. FOOT PEG [PEG] x 2 13. FOOT PEG END CAP [ST-002] x 2 14. PEDAL TIP (DELIRIN) [ST-001D18] x 2 | <ul style="list-style-type: none"> 15. BEARING COLLAR 5 (BK) [PEGBGCLR-5] 16. PEG COLLAR 12 [PEGCLR-12] x 2 17. HEX HEAD M5x6mm [HBT-M56] 18. HEX HEAD M8x40mm [HBT-M840] x 2 19. SOCKET HEAD M5x40mm [SBT-M540] 20. SOCKET HEAD M6x18mm [SBT-M618] 21. SOCKET HEAD M8x20mm [SBT-M820] x 4 22. SOCKET HEAD C M8x20mm [SBT-M820C] 23. SOCKET HEAD M8x35mm [SBT-M835] 24. BUTTON HEAD M6x10mm [BBT-M610] x 2 25. BUTTON HEAD M6x12mm [BBT-M612] x 2 26. BUTTON HEAD M6x20mm [BBT-M620] x 2 27. BUTTON HEAD M6x30mm [BBT-M630] x 2 28. BUTTON HEAD M8x25mm [BBT-M825] x 2 | <ul style="list-style-type: none"> 29. FLAT HEAD M6x15mm [FBT-M615] x 3 30. WASHER M6 [WS-6] 31. SPLIT WASHER M8 [SWS-8] 32. E-CLIP M6 [ECP-6] 33. BRAKE ROD S [BRD-S35] 34. REVERSE MALE ROD END M6 [RDED-M6L] 35. NUT M5 [NUT-5] x 2 (1 is used for relocating reservoir) 36. REVERSE JAM NUT M6 [JNT-6L] 37. PULL SWITCH STAY 16 [PSTAY-16] 38. RETURN SPRING 40 [RS-RSP] 39. NUT M8 (YAMAHA part) 40. BASE PLATE COLLAR 2 (BK) [BPCLR-2] x 2 <p>Not pictured -
- UNIVERSAL STAY (for relocating brake reservoir)</p> |
|---|--|---|