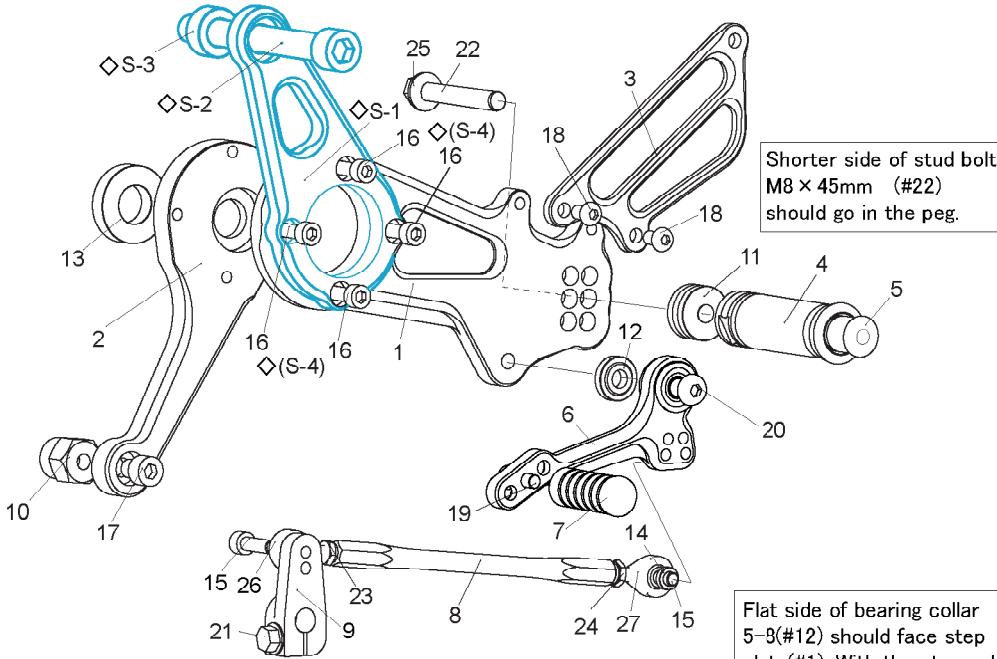
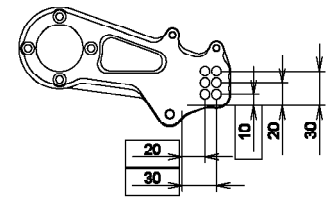
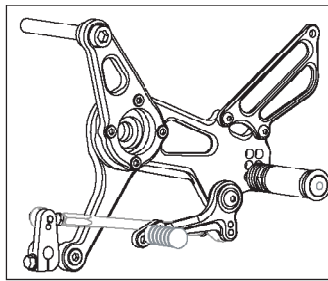


VTR250 '98- (L)

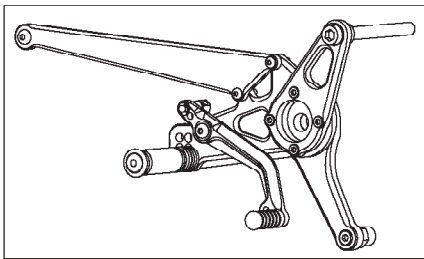
Due to running improvements in the designs of Sato parts, some new replacement parts may look somewhat different than the original parts with the same part #. These slight differences are mostly cosmetic and have no effect on performance.



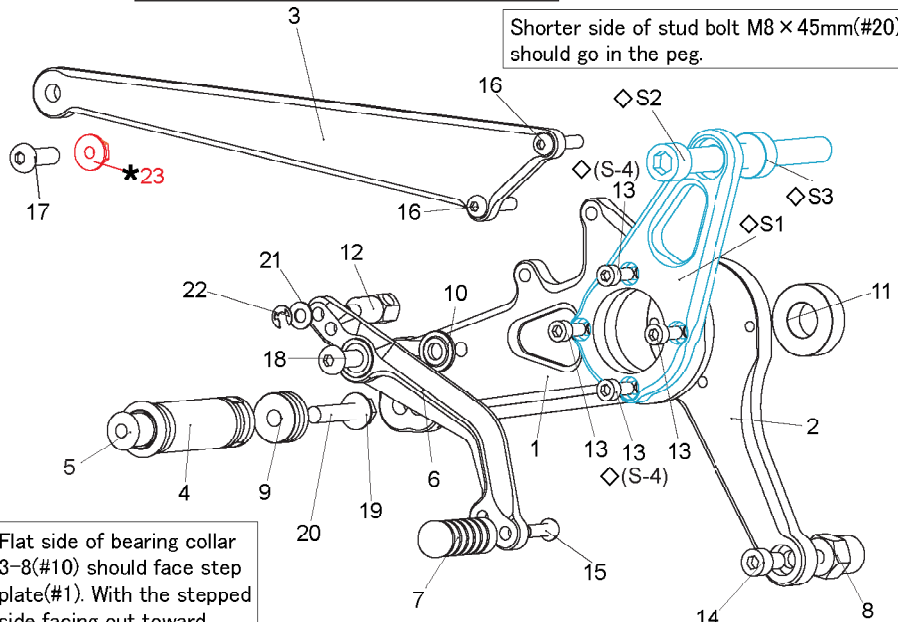
1. STEP PLATE [L]
2. BASE PLATE [R](BK)
3. HEEL GUARD [L](HG2)
4. FOOT PEG
5. FOOT PEG END CAP
6. SHIFT PEDAL CPSS75(SPD10)
7. PEDAL TIP DELRIN
8. SHIFT ROD 150
9. CHANGE ARM SS(BK)
10. NUT 21-8(BK)
11. FOOT PEG COLLAR 12
12. FOOT PEG BEARING COLLAR 5-8(BK)
13. COLLAR 8(BK)
14. ROD END COLLAR 3
15. SOCKET HEAD M6 × 20mm × 2
16. SOCKET HEAD M6 × 15mm × 4
17. SOCKET HEAD M8 × 10mm
18. BUTTON HEAD M6 × 10mm × 2
19. BUTTON HEAD M6 × 20mm
20. BUTTON HEAD M8 × 25mm
21. FLANGE HEAD M6 × 20mm
22. STUD BOLT M8 × 45mm
23. JAM NUT M6
24. REVERSE JAM NUT M6
25. FLANGE NUT M8
26. MALE ROD END M6
27. MALE REVERSE ROD END M6

- (option)
- ◇ S-1 VTR250 SUB PLATE [L]
 - ◇ S-2 SOCKET HEAD M12 × 110mm (P-1.25)
 - ◇ S-3 COLLAR 10-12(BK)
 - ◇ S-4 SOCKET HEAD M6 × 25mm × 4

(R)



P-1.25 brake light switch included.



1. STEP PLATE [R]
2. BASE PLATE [R](BK)
3. CANISTER BRACKET
4. FOOT PEG
5. FOOT PEG END CAP
6. BRAKE PEDAL BP001(BPD8)
7. PEDAL TIP DELRIN
8. NUT 27-8(BK)
9. FOOT PEG COLLAR 12
10. FOOT PEG BEARING COLLAR 3-8(BK)
11. COLLAR 11(BK)
12. BRAKE ROD M40
13. SOCKET HEAD M6 × 15mm × 4
14. SOCKET HEAD M8 × 15mm
15. BUTTON HEAD M6 × 20mm
16. BUTTON HEAD M6 × 30mm × 2
17. BUTTON HEAD M8 × 25mm
18. BUTTON HEAD M8 × 25mm
19. FLANGE NUT M8
20. STUD BOLT M8 × 45mm
21. WASHER M6
22. E CLIP M6
- *23. FLANGE NUT M8(STOCK)

- (option)
- ◇ S-1 VTR250 SUB PLATE [R]
 - ◇ S-2 SOCKET HEAD M12 × 130mm (P-1.25)
 - ◇ S-3 COLLAR 10-10(BK)
 - ◇ S-4 SOCKET HEAD M6 × 25mm × 4