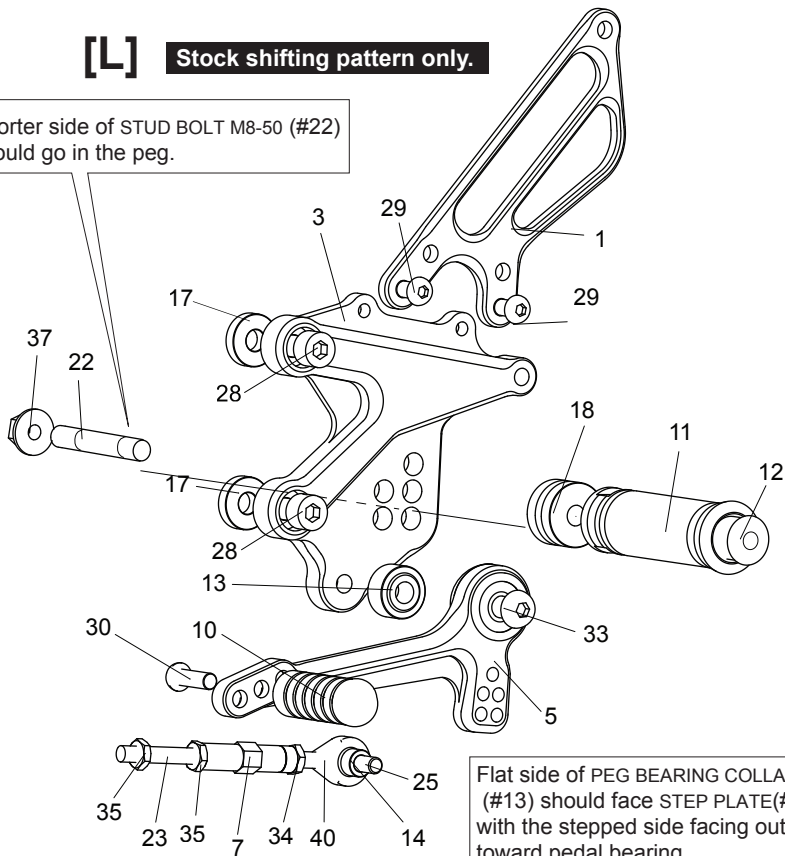


[L] Stock shifting pattern only.

Shorter side of STUD BOLT M8-50 (#22) should go in the peg.



Flat side of PEG BEARING COLLAR 10S (#13) should face STEP PLATE(#3). with the stepped side facing out toward pedal bearing.

[L]-SIDE

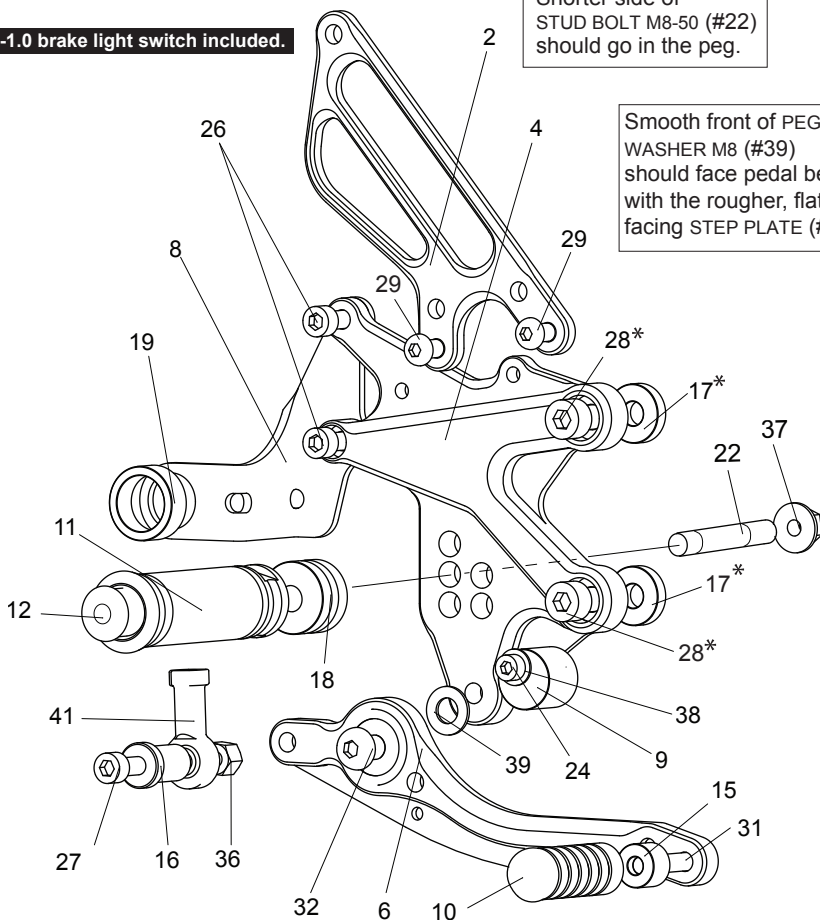
1. (L) HEEL GUARD [HG-3L]
3. (L) STEP PLATE
5. SHIFT PEDAL SCP65-75 [SPD0912]
7. SHIFT ROD 40 [SRD-40]
10. PEDAL TIP (DELRIN) [ST-001D]
11. FOOT PEG [PEG]
12. FOOT PEG END CAP [ST-002]
13. PEG BEARING COLLAR 10S(BK) [PEGBGCLR-10S]
14. ROD END COLLAR 6(GD) [RDEDCLR-6]
17. BASE PLATE COLLAR 5 [BPCLR-5] (x2)
18. FOOT PEG COLLAR 15 [PEGCLR-15]
22. STUD BOLT M8-50 [STBT-50]
23. STUD M6-45 [STUD-M6]
25. SOCKET HEAD M6-25 [SBT-M625]
28. SOCKET HEAD M8-25 [SBT-M825] (x2)
29. BUTTON HEAD M6-10 [BBT-M610] (x2)
30. BUTTON HEAD M6-20 [BBT-M620]
33. BUTTON HEAD M8-35 [BBT-M835]
34. REVERSE JAM NUT M6 [JNT-6L]
35. JAM NUT M6 [JNT-6] (x2)
37. FLANGE LOCK NUT M8 [FLNT-8]
40. MALE REVERSE ROD END M6 [RDED-M6L]

[R]

P-1.0 brake light switch included.

Shorter side of STUD BOLT M8-50 (#22) should go in the peg.

Smooth front of PEG WASHER M8 (#39) should face pedal bearing, with the rougher, flat side facing STEP PLATE (#4).



[R]-SIDE

2. (R) HEEL GUARD [HG-3R]
4. (R) STEP PLATE
6. BRAKE PEDAL 165 [BPD-3b]
8. CANISTER BRACKET
9. BRAKE PEDAL STOPPER (DELRIN) [BPD-STOPPER]
10. PEDAL TIP (DELRIN) [ST-001D]
11. FOOT PEG [PEG]
12. FOOT PEG END CAP [ST-002]
15. COLLAR 10-6(BK) [CLR-10-6B]
16. COLLAR 23-6(BK) [RDEDCLR-23]
17. BASE PLATE COLLAR 5(BK) [BPCLR-5] (x2)*
18. FOOT PEG COLLAR 15
19. COLLAR 9-18.5 [CLR-9-185]
22. STUD BOLT M8-50 [STBT-50]
24. SOCKET HEAD M5-25 [SBT-M525]
26. SOCKET HEAD M6-20 [SBT-M620] (x2)
27. SOCKET HEAD M6-50 [SBT-M650]
28. SOCKET HEAD M8-25 [SBT-M825] (x2)*
29. BUTTON HEAD M6-10 [BBT-M610] (x2)
31. BUTTON HEAD M6-30 [BBT-M630]
32. BUTTON HEAD M8-25 [BBT-M625]
36. LOCK NUT M6 [LNT-6]
37. FLANGE LOCK NUT M8 [FLNT-8]
38. WASHER M5 [WS-5]
39. PEG WASHER M8 [PWS-8]
41. FEMALE ROD END M6 [RDED-F6]

* For additional clearance for the master cylinder brake line parts on the R-side on later ABS-equipped models, replace #17 COLLAR 5 (x2) with COLLAR 10 (x2), and #28 SOCKET HEAD M8x25mm (x2) with SOCKET HEAD M8x30mm (x2).