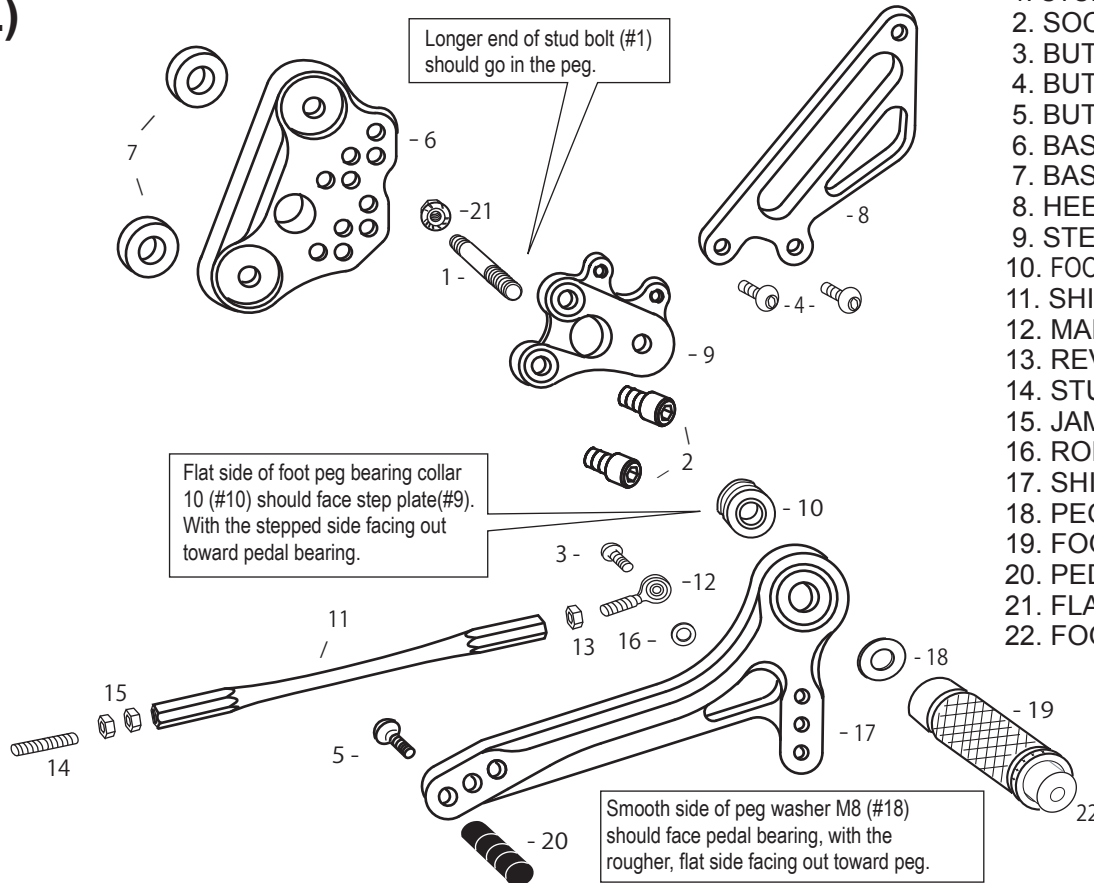


# GSX1300R Hayabusa -'07

(L)

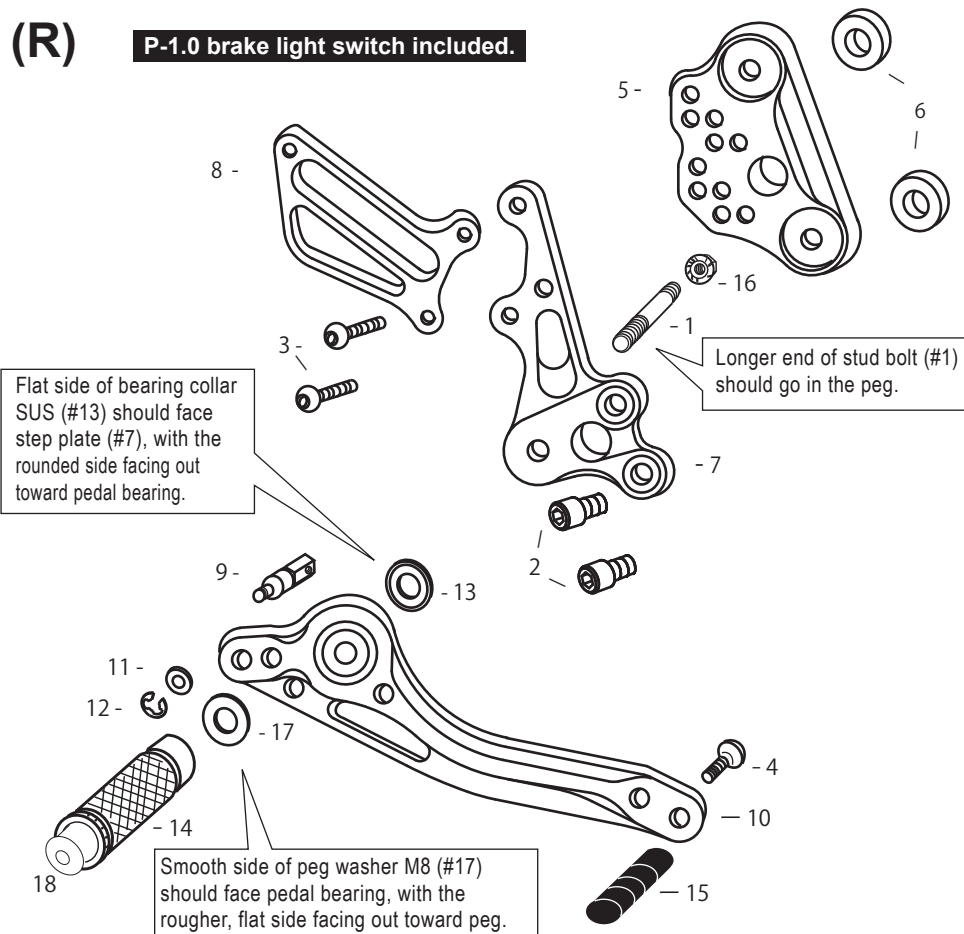


1. STUD BOLT LONG
2. SOCKET HEAD M8×15mm ×2
3. BUTTON HEAD M6×20mm
4. BUTTON HEAD M6×10mm ×2
5. BUTTON HEAD M6×20mm
6. BASE PLATE [L]
7. BASE PLATE COLLAR 8(BK)×2
8. HEEL GUARD [L](HG8)
9. STEP PLATE [L]
10. FOOT PEG BEARING COLLAR 10
11. SHIFT ROD 145
12. MALE REVERSE ROD END M6
13. REVERSE JAM NUT M6
14. STUD M6
15. JAM NUT M6 ×2
16. ROD END COLLAR 3
17. SHIFT PEDAL 60(SPD1)
18. PEG WASHER M8
19. FOOT PEG
20. PEDAL TIP DELRIN
21. FLANGE NUT M8
22. FOOT PEG END CAP



(R)

**P-1.0 brake light switch included.**



1. STUD BOLT SHORT
2. SOCKET HEAD M8×15mm ×2
3. BUTTON HEAD M6×25mm ×2
4. BUTTON HEAD M6×20mm
5. BASE PLATE [R]
6. BASE PLATE COLLAR 8(BK)×2
7. STEP PLATE [R]
8. HEEL GUARD [R](HG1)
9. BRAKE ROD M40
10. BRAKE PEDAL 150(BPD1)
11. PLAIN WASHER M6
12. E CLIP M6
13. BEARING COLLAR SUS
14. FOOT PEG
15. PEDAL TIP DELRIN
16. FLANGE NUT M8
17. PEG WASHER M8
18. FOOT PEG END CAP