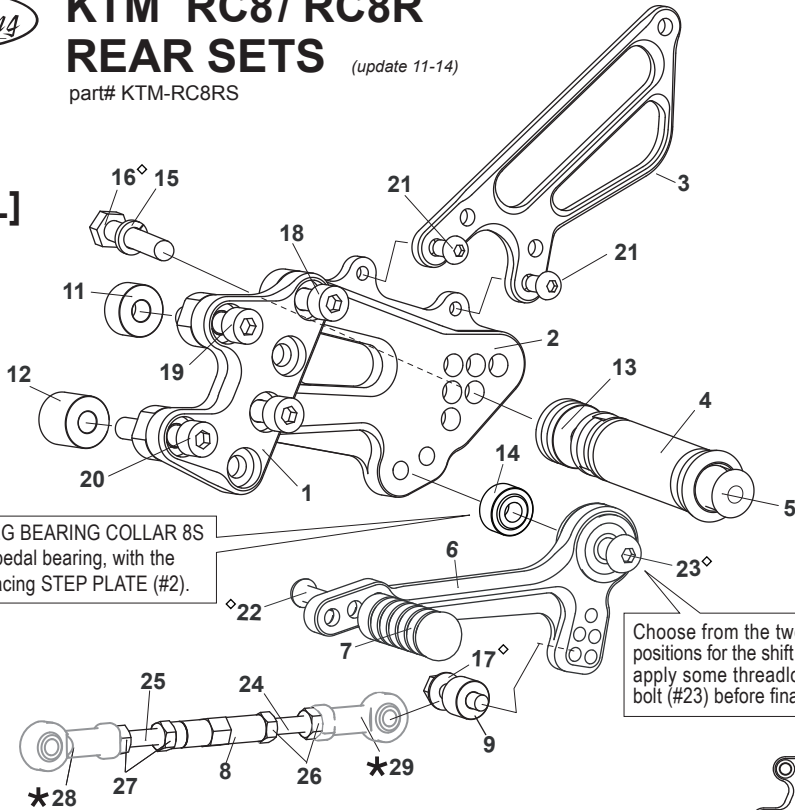


KTM RC8/ RC8R REAR SETS

part# KTM-RC8RS

(update 11-14)

[L]

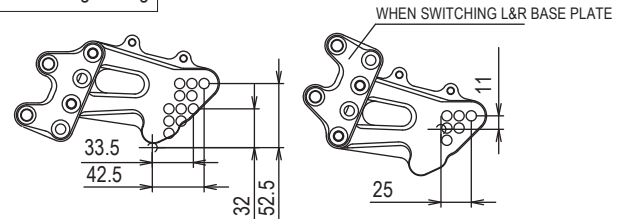


Smooth front of PEG BEARING COLLAR 8S (#14) should face pedal bearing, with the rougher, flat side facing STEP PLATE (#2).

Choose from the two mounting positions for the shift pedal, then apply some threadlocker to the bolt (#23) before final tightening.

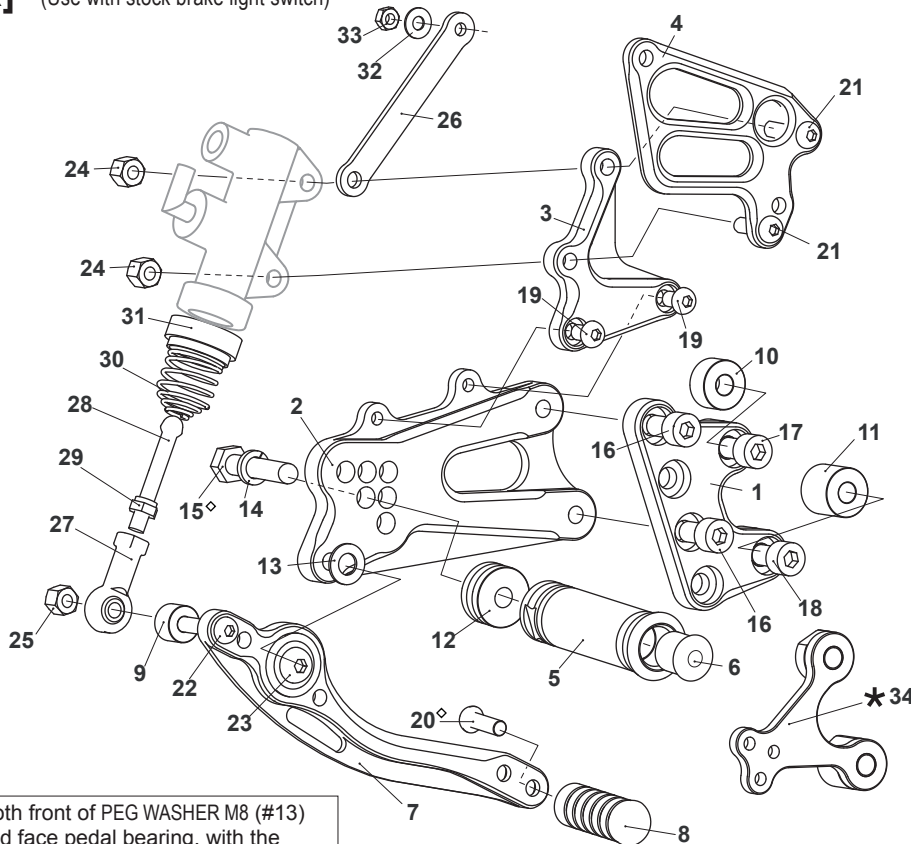
*** NOTE:** These Rear Sets were originally designed for '08 to early-'11 RC8 that use female rod ends for the stock shift rod. Most '11 and later RC8/R's use male rod ends instead. For those later RC8, you will need to purchase Female Rod Ends part# RDED-F6 (x1) and RDED-F6L (x1) (sold separately).

1. [L] BASE PLATE [KTM-RC8BP-L]
2. [L] STEP PLATE [KTM-RC8BP-R]
3. [L] HEEL GUARD [HG14]
4. FOOT PEG [PEG]
5. FOOT PEG END CAP [ST-002]
6. SHIFT PEDAL CPS675 [SPD912]
7. PEDAL TIP (DELRIN) [ST-001D]
8. SHIFT ROD 40 [SRD-40]
9. COLLAR M6-10(BK) [BRDCLR10]
11. COLLAR M8-10(BK) [BPCLR10]
12. COLLAR M8-18(BK) [BPCLR18]
13. FOOT PEG COLLAR 12 [PEGCLR-12]
14. BEARING COLLAR 8S (BK) [BGCLR-8S]
15. SPLIT WASHER M8 [SWS-8]
16. HEX BOLT M8x40 [HBT-M840]
17. FLANGE HEAD M6x25 [FGBT-M625]
18. SOCKET HEAD M8x15 (x2)
19. SOCKET HEAD M8x35
20. SOCKET HEAD M8x45
21. BUTTON HEAD M6x10 (x2)
22. BUTTON HEAD M6x20
23. BUTTON HEAD M8x35
24. STUD M6x45 [STUD-M6]
25. REVERSE STUD M6x45 [STUD-M6L]
26. JAM NUT M6 [JNT-6] (x2)
27. REVERSE JAM NUT M6 [JNT-6L] (x2)
- * 28. FEMALE ROD END M6 [R] (STOCK)**
- * 29. FEMALE ROD END M6 [L] (STOCK)**



All measurements are in relation to stock position (0 mm)

[R] (Use with stock brake light switch)



Smooth front of PEG WASHER M8 (#13) should face pedal bearing, with the rougher, flat side facing STEP PLATE (#2).

1. [R] BASE PLATE [KTM-RC8BP-R]
2. [R] STEP PLATE [KTM-RC8SP-R]
3. MASTER STAY [KTM-RC8MS]
4. HEEL GUARD [R] [HG-20R]
5. FOOT PEG [PEG]
6. FOOT PEG END CAP [ST-002]
7. BRAKE PEDAL 180 [BPD2]
8. PEDAL TIP (DELRIN) [ST-001D]
9. COLLAR M6-10(BK) [BRD-CLR10]
10. COLLAR M8-10(BK) [BPCLR10]
11. COLLAR M8-18(BK) [BPCLR18]
12. FOOT PEG COLLAR 12 [PEGCLR-12]
13. PEG WASHER M8 [PWS-8]
14. SPLIT WASHER M8 [SWS-8]
15. HEX BOLT M8 x 40 [HBT-M840]
16. SOCKET HEAD M8x15 (x2)
17. SOCKET HEAD M8x35
18. SOCKET HEAD M8x45
19. BUTTON HEAD M6x10 (x2)
20. BUTTON HEAD M6x20
21. BUTTON HEAD M6x30 (x2)
22. BUTTON HEAD M6x35
23. BUTTON HEAD M8x25
24. PLAIN NUT M6 [NUT-6] (x2)
25. LOCK NUT M6 [LNT-6]
26. BRACKET M6-75 [UB-M675]
27. FEMALE ROD END M6 [RDED-F6]
28. PUSH ROD [PRD]
29. SPRING SEAT M6 [NUT-SPS6]
30. RETURN SPRING 40 [RS-RSP]
31. RETURN SPRING COLLAR(BK) [RS-RSCLR]
32. WASHER M5 [WS-5]
33. PLAIN NUT M5 [NUT-5]
- * 34. FAIRING STAY [KTM-RC8RS-FS] (OPTIONAL PART)**

*** For Akrapovic exhaust system, replace #10 & #11 with FAIRING STAY (#34)**

◊ We recommend applying some threadlocker (such as Loctite or Vibra Tite) to these bolts. This should help prevent the parts from vibrating their way loose during a ride.