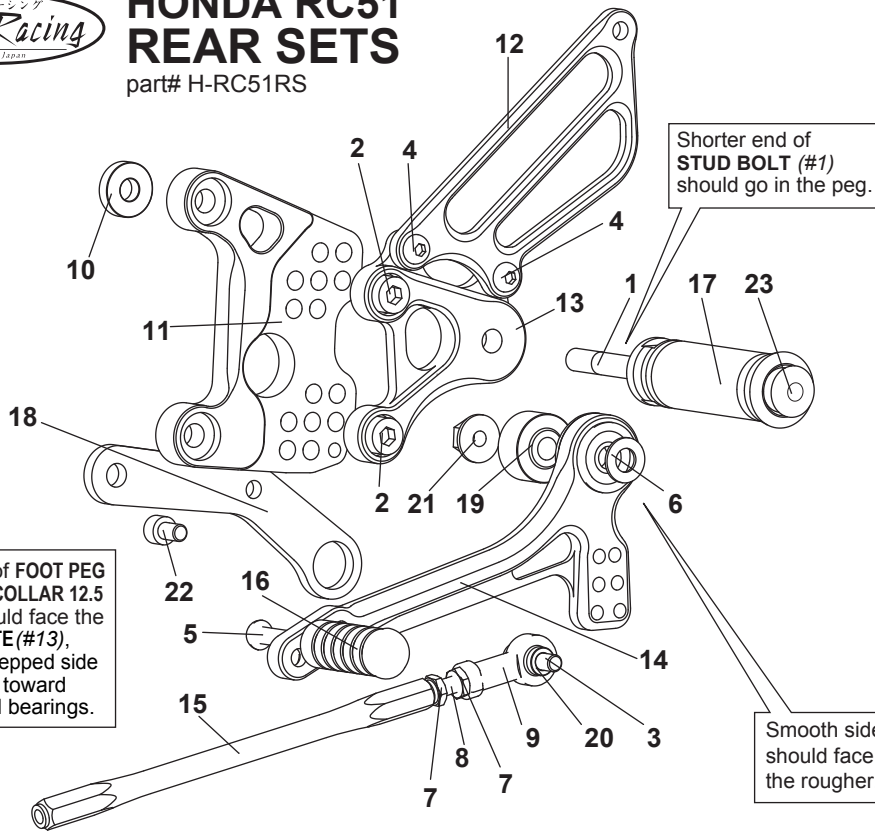


HONDA RC51 REAR SETS

part# H-RC51RS

[L]



Flat side of FOOT PEG BEARING COLLAR 12.5 (#19) should face the STEP PLATE (#13), with the stepped side facing out toward shift pedal bearings.

Smooth side of PEG WASHER M8 (#6) should face the shift pedal bearings, with the rougher, flat side facing out toward peg.

[L]-SIDE

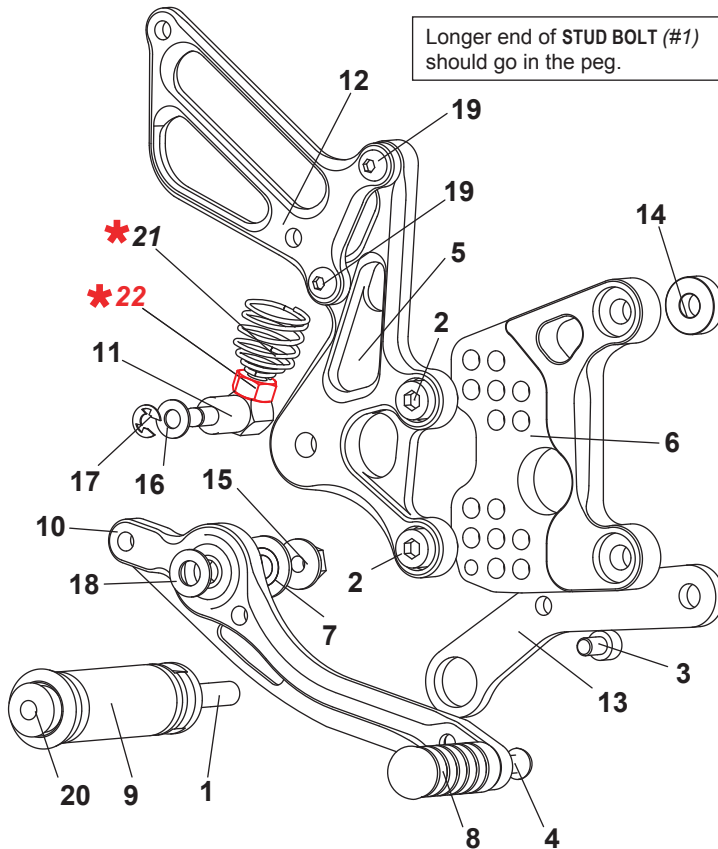
1. STUD BOLT M8-65mm [STBT-L]
2. SOCKET HEAD M8-15mm [SBT-M815] x2
3. BUTTON HEAD M6-20mm [BBT-M620]
3. BUTTON HEAD M6-10mm [BBT-M610] x2
5. BUTTON HEAD M6-20mm [BBT-M620]
6. PEG WASHER M8 [PWS-8]
7. JAM NUT M6 [JNT-6] x2
8. STUD M6 [STUD-M6]
9. FEMALE ROD END M6 [RDED-F6]
10. BASE PLATE COLLAR 5(BK) [BPCLR-5]
11. BASE PLATE [L] [H-RC51BP-L]
12. HEEL GUARD [L] [HG-2L]
13. STEP PLATE [L] [H-RC51SP-L]
14. SHIFT PEDAL 60-70 [SPD0102]
15. SHIFT ROD 170 [SRD-170]
16. PEDAL TIP (DELRIN) [ST-001D18]
17. FOOT PEG [PEG]
18. PIPE STAY (BK) [H-RC51PS]
19. FOOT PEG BEARING COLLAR 12.5 [PEGBGLCR-12.5]
20. ROD END COLLAR 3(GD) [RDED-CLR3]
21. FLANGE NUT M8
22. SOCKET HEAD M6-15mm [SBT-M615]
23. FOOT PEG END CAP [ST-002]

The angle of the stock change arm may need to be adjusted when installing SATO Rear Sets.

*This "pipe stay" is only needed for use with stock pipes and certain non-SATO pipes. Do not install it with SATO pipes.

[R]

(P-1.25 brake light switch is included in kit)



Longer end of STUD BOLT (#1) should go in the peg.

Due to running improvements in the designs of Sato parts, some new replacement parts may look somewhat different than the original parts with the same part #. These slight differences are mostly cosmetic and have no effect on performance.

Smooth side of PEG WASHER M8 (#18) should face the shift pedal bearings, with the rougher, flat side facing out toward peg.

Flat side of BEARING COLLAR SUS (#7) should face STEP PLATE (#5), with the rounded side facing out toward pedal bearings.

[R]-SIDE

1. STUD BOLT M8-55mm [STBT-S]
2. SOCKET HEAD M8-15mm [SBT-M815] x2
3. SOCKET HEAD M6-15mm [SBT-M615]
4. BUTTON HEAD M6-20mm [BBT-M620]
5. STEP PLATE [R] [H-RC51SP-R]
6. BASE PLATE [R] [H-RC51BP-R]
7. BEARING COLLAR SUS [BGCLR-SUS]
8. PEDAL TIP (DELRIN) [ST-001D18]
9. FOOT PEG [PEG]
10. BRAKE PEDAL 165 [BPD-3]
11. BRAKE ROD M40 [BRD-M40]
12. HEEL GUARD [R] [HG-1R]
13. PIPE STAY (BK) [H-RC51PS]
14. BASE PLATE COLLAR 6(BK) [BPCLR-6]
15. FLANGE NUT M8 [FNT-8]
16. PLAIN WASHER M6 [WS-6]
17. E CLIP M6 [ECP-6]
18. PEG WASHER M8 [PWS-8]
19. BUTTON HEAD M6-25mm [BBT-M625] x2
20. FOOT PEG END CAP [ST-002]
- *21. RETURN SPRING 40 [RS-RSP] (OPTION)
- *22. NUT (HONDA PART)

POSITIONS		
1	0mm	10mm Up
2	0mm	20mm Up
3	10mm Back	10mm Up
4	10mm Back	20mm Up
5	10mm Back	30mm Up
6	20mm Back	20mm Up
7	20mm Back	30mm Up

All measurements are in relation to stock position (0 mm)