

# MV AGUSTA F4 ('10-) REVERSE SHIFT REAR SETS

part# MV-F410RSR

## [L] SIDE

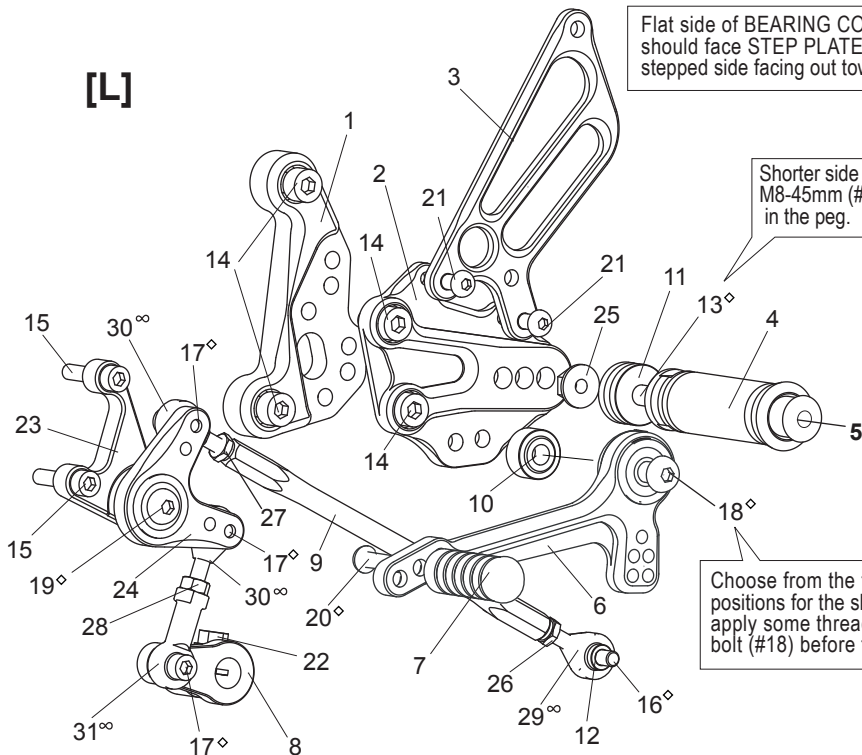
1. BASE PLATE [L]
2. STEP PLATE [L]
3. HEEL GUARD [L] [HG6L]
4. FOOT PEG
5. FOOT PEG END CAP
6. SHIFT PEDAL SCP65-75 [SPD0912]
7. PEDAL TIP (DELRIN) [ST-001D]
8. CHANGE ARM (BK) [CA-3]
9. SHIFT ROD 170
10. BEARING COLLAR 5S(BK)
11. FOOT PEG COLLAR 12
12. ROD END COLLAR 3 (GD)
13. STUD BOLT M8-45mm
14. SOCKET HEAD M8×15mm (x4)
15. SOCKET HEAD M6×30mm (x2)
16. SOCKET HEAD M6×20mm
17. SOCKET HEAD M6×15mm (x3)
18. BUTTON HEAD M8×35mm
19. BUTTON HEAD M8×25mm
20. BUTTON HEAD M6×20mm
21. BUTTON HEAD M6×10mm (x2)
22. FLANGE HEAD M6×20mm
23. SHIFT BASE (BK)
24. SHIFT LINK (BK)
25. FLANGE NUT M8
26. REVERSE JAM NUT M6
27. JAM NUT M6
28. PLAIN NUT M6
29. MALE REVERSE ROD END M6
30. MALE ROD END M6 (x2)
31. FEMALE ROD END M6

[L]

Flat side of BEARING COLLAR 5S (#10) should face STEP PLATE(#2), with the stepped side facing out toward pedal bearing.

Shorter side of STUD BOLT M8-45mm (#13) should go in the peg.

Choose from the two mounting positions for the shift pedal, then apply some threadlocker to the bolt (#18) before final tightening.



Due to running improvements in the designs of Sato parts, some new replacement parts may look somewhat different than the original parts with the same part #. These slight differences are mostly cosmetic and have no effect on performance.

[R] (No brake light switch included in kit. Use with stock switch)

## [R] SIDE

1. BASE PLATE [R]
2. STEP PLATE [R]
3. HEEL GUARD [R] [HG-6R]
4. FOOT PEG
5. FOOT PEG END CAP
6. BRAKE PEDAL SSBP75 [BPD10]
7. PEDAL TIP (DELRIN) [ST-001D]
8. BRAKE LINK F4(BK)
9. SHIFT ROD 140
10. FOOT PEG COLLAR 12
11. ROD END COLLAR 3 (GD)
12. BRAKE ROD COLLAR 15(BK)
13. STUD BOLT M8-45mm
14. SOCKET HEAD M8×15mm (x4)
15. SOCKET HEAD M6×35mm
16. SOCKET HEAD M6×30mm
17. SOCKET HEAD M6×20mm
18. SOCKET HEAD M8×30mm
19. BUTTON HEAD M8×25mm
20. BUTTON HEAD M6×20mm
21. BUTTON HEAD M6×10mm (x2)
22. PEG WASHER M8 (x2)
23. FLANGE NUT M8
24. JAM NUT M6
25. REVERSE JAM NUT M6
26. LOCK NUT M6
27. MALE ROD END M6
28. MALE REVERSE ROD END M6
29. FEMALE ROD END M6

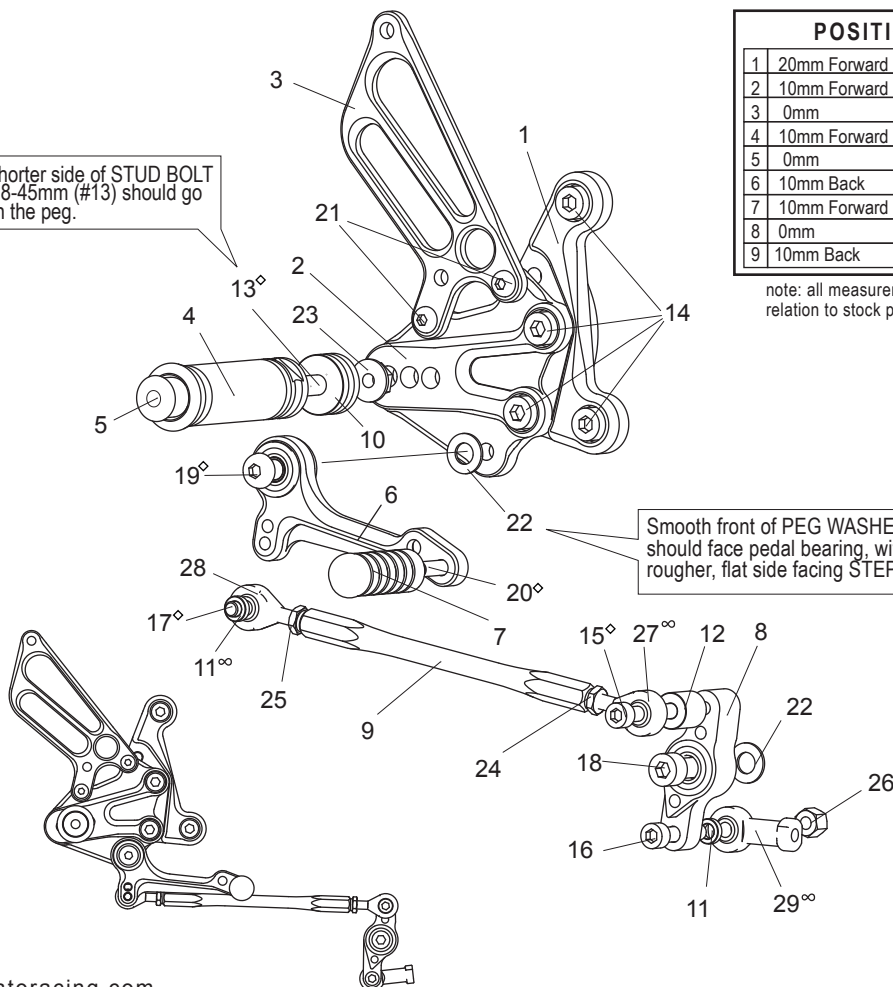
### POSITIONS

1	20mm Forward	10mm Down
2	10mm Forward	10mm Down
3	0mm	10mm Down
4	10mm Forward	0mm
5	0mm	0mm
6	10mm Back	0mm
7	10mm Forward	10mm Up
8	0mm	10mm Up
9	10mm Back	10mm Up

note: all measurements are in relation to stock position (0 mm).

Shorter side of STUD BOLT M8-45mm (#13) should go in the peg.

Smooth front of PEG WASHER M8 (#22) should face pedal bearing, with the rougher, flat side facing STEP PLATE(#2).



◇ We recommend applying some threadlocker (such as Loctite or Vibra Tite) to these bolts. This should help prevent the parts from vibrating their way loose during a ride. (Some pre-assembled parts have already been Loctited)

∞ Lubricate rod ends regularly