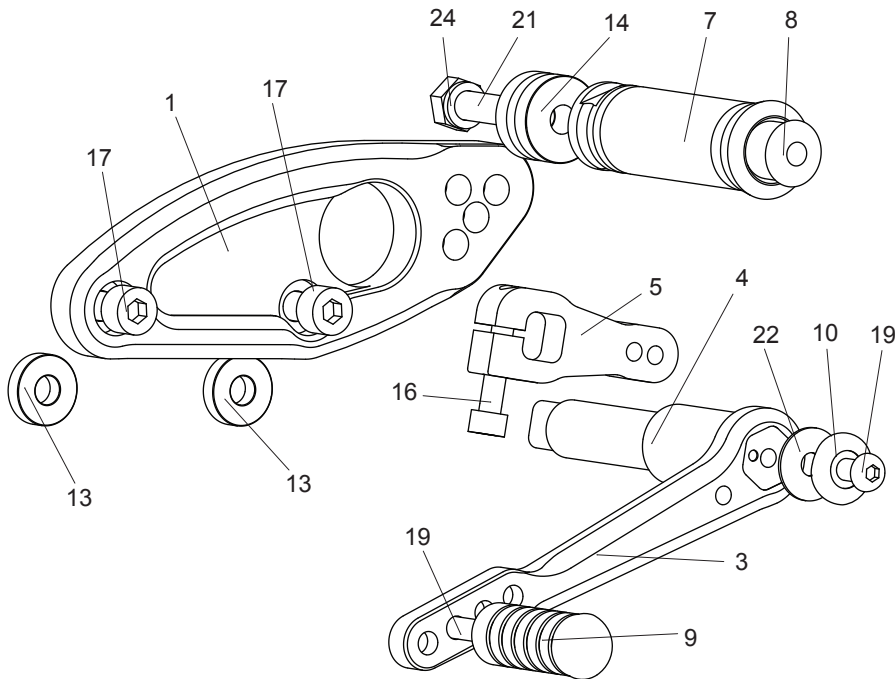
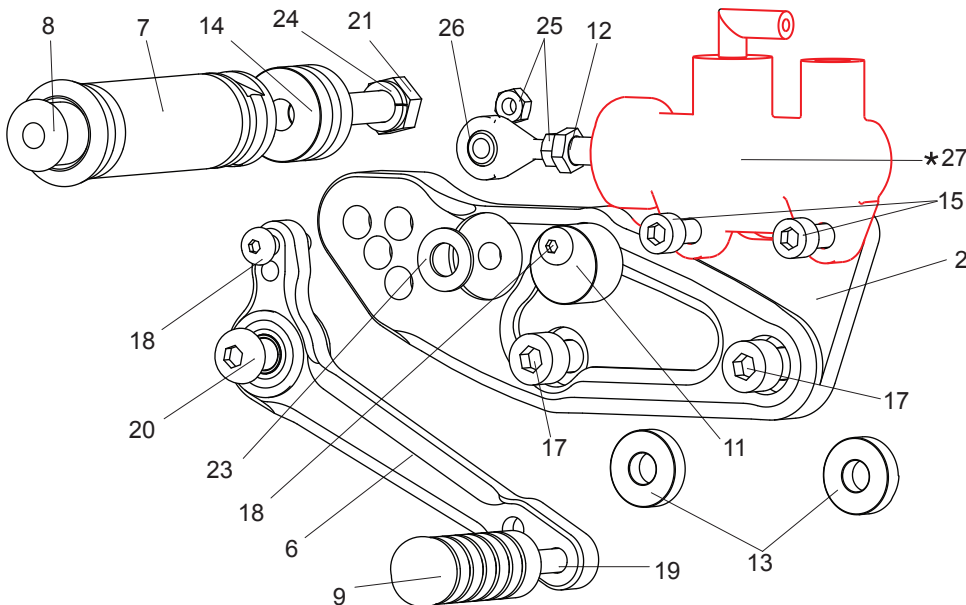


[L] Stock shifting pattern only.



1. (L) STEP PLATE [MG-V7SP-L]
3. SHIFT PEDAL [SPD-MG1]
4. SHIFT SHAFT (SV)
5. CHANGE ARM (SV) [CA-MG1]
7. FOOT PEG [PEG]
8. FOOT PEG END CAP [ST-002]
9. PEDAL TIP (DELRIN) [ST-001D]
10. FLANGE M6 (SV)
13. COLLAR 5-8 (BK) [BPCLR-5] x2
14. FOOT PEG COLLAR 15 [PEGCLR-15]
16. SOCKET HEAD M6-25mm [SBT-M625]
17. SOCKET HEAD M8-20mm [SBT-M820] x2
19. BUTTON HEAD M6-20mm [BBT-M620] x2
21. HEX HEAD M8-40mm [HBT-M840]
22. WASHER M6L [WS-6L]
24. SPLIT WASHER M8 [SWS-8]

[R] (No brake light switch is included in kit. Use with stock brake light switch)



2. (R) STEP PLATE [MG-V7SP-R]
6. BRAKE PEDAL [BPD-MG1]
7. FOOT PEG [PEG]
8. FOOT PEG END CAP [ST-002]
9. PEDAL TIP (DELRIN) [ST-001D]
11. BRAKE PEDAL STOPPER (DELRIN) [BPD-STOPPER]
12. PUSH ROD [PRD]
13. COLLAR 5-8 (BK) [BPCLR-5] x2
14. FOOT PEG COLLAR 15 [PEGCLR-15]
15. SOCKET HEAD M6-16mm [SBT-M616] x2
17. SOCKET HEAD M8-20mm [SBT-M820] x2
18. BUTTON HEAD M5-20mm [BBT-M520] x2
19. BUTTON HEAD M6-20mm [BBT-M620]
20. BUTTON HEAD M8-25mm [BBT-M825]
21. HEX HEAD M8-40mm [HBT-M840]
23. PEG WASHER M8 [PWS-8]
24. SPLIT WASHER M8 [SWS-8]
25. PLAIN NUT M5 [NUT-5]
26. MALE ROD END M5 [RDED-M5]
- ★ 27. REAR MASTER CYLINDER (MOTO GUZZI PARTS)

Smooth front of PEG WASHER M8 (#23) should face pedal bearing, with the rougher, flat side facing STEP PLATE (#2).

Due to running improvements in the designs of Sato parts, some new replacement parts may look somewhat different than the original parts with the same part #. These slight differences are mostly cosmetic and have no effect on performance.