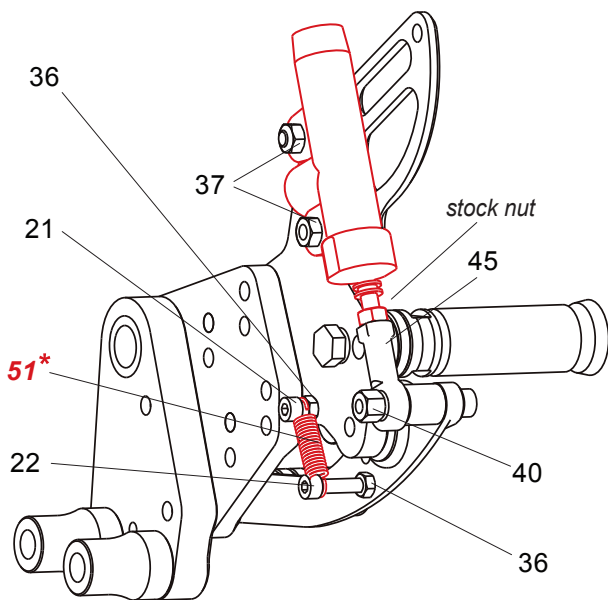


(BACK SIDE)



- 2. (R) HEEL GUARD [HG-22R]
 - 4. (R) STEP PLATE [KTM-D39017SP-R]
 - 6. (R) EXTENSION PLATE (BK) [KTM-D39017EP-R]
 - 8. (R) BASE PLATE (BK) [KTM-D39017BP-R]
 - 12. BRAKE PEDAL [BPD-2]
 - 13. FOOT PEG [PEG]
 - 14. FOOT PEG END CAP [ST-002]
 - 15. PEDAL TIP (DELRIN) [ST-001D18]
 - 16. PEDAL STOPPER 12.5 (DELRIN) [BPD-STOPPER]
 - 18. ROD END COLLAR 15 (BK) [RDED-CLR15]
 - 19. PEG COLLAR 12 [PEGCLR-12]
 - 20. BASE PLATE COLLAR 33-10S (BK) [CLR-33-10S] x 2
 - 21. SOCKET HEAD M5x10mm [SBT-M510]
 - 22. SOCKET HEAD M5x25mm [SBT-M525]
 - 23. SOCKET HEAD M5x20mm [SBT-M520]
 - 24. SOCKET HEAD M6x20mm [SBT-M620]
 - 25. SOCKET HEAD M6x40mm [SBT-M640]
 - 26. SOCKET HEAD M8x15mm [SBT-M815] x 4
 - 28. BUTTON HEAD M6x20mm [BBT-M620]
 - 29. BUTTON HEAD M8x25mm [BBT-M825]
 - 30. FLAT HEAD M6x12mm [FBT-M612]
 - 31. FLAT HEAD M6x30mm [FBT-M630]
 - 33. HEX HEAD M8x40mm [HBT-M840]
 - 34. SET SCREW M3x14mm [SSCW-M314]
 - 36. NUT M5 [NUT-5] x 2
 - 37. NUT M6 [NUT-6] x 2
 - 40. LOCK NUT M6 [LNT-6]
 - 41. WASHER M5 [WS-5]
 - 42. SMALL WASHER M8 [PWS-8]
 - 43. SPLIT WASHER M8 [SWS-8]
 - 45. FEMALE ROD END M6 [RDED-F6]
- *STOCK KTM PARTS:**
46. NUT M6
47. ROD
48. MASTER CYLINDER
49. WASHER
50. ADJUSTER BOLT
51. SPRING