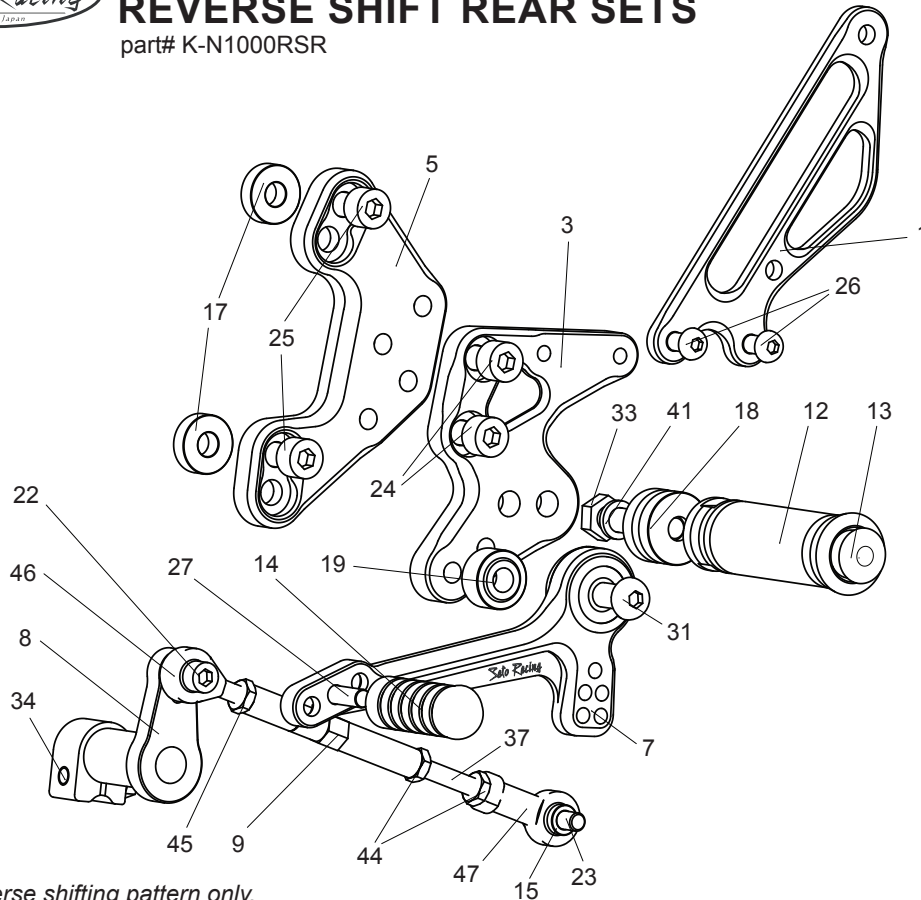


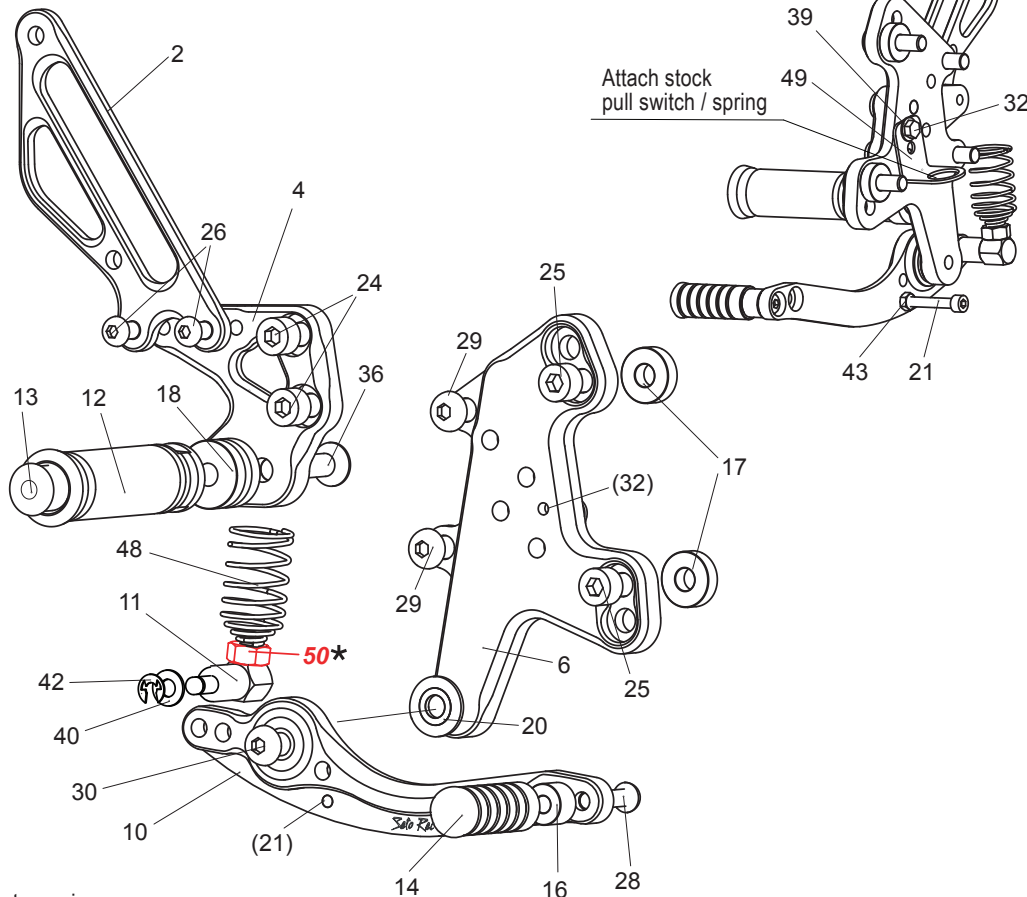
[L]



Reverse shifting pattern only.

[R]

(Use stock brake light switch)



(BACK SIDE)

Attach stock
pull switch / spring

1. (L) HEEL GUARD [HG-8L]
2. (R) HEEL GUARD [HG-8R]
3. (L) STEP PLATE
4. (R) STEP PLATE
5. (L) BASE PLATE
6. (R) BASE PLATE
7. SHIFT PEDAL [SPD-0912]
8. SHIFT ARM (BK) [CA-1]
9. SHIFT ROD 70 [SRD-70]
10. BRAKE PEDAL 180b [BPD-2]
11. BRAKE ROD M40 [BRD-M40]
12. FOOT PEG x 2
13. FOOT PEG END CAP x 2
14. PEDAL TIP (DELRIN) x 2
15. ROD END COLLAR 3 (GD)
16. COLLAR 10-6(BK)
17. BASE PLATE COLLAR 6 (BK) x 4
18. FOOT PEG COLLAR 15 x 2
19. BEARING COLLAR 10S (BK)
20. BEARING COLLAR SUS
21. SOCKET HEAD M5-35mm
22. SOCKET HEAD M6-15mm
23. SOCKET HEAD M6-20mm
24. SOCKET HEAD M8-15mm x 4
25. SOCKET HEAD M8-25mm x 4
26. BUTTON HEAD M6-10mm x 4
27. BUTTON HEAD M6-20mm
28. BUTTON HEAD M6-25mm
29. BUTTON HEAD M8-15mm x 2
30. BUTTON HEAD M8-25mm
31. BUTTON HEAD M8-35mm
32. HEX HEAD M5-8mm
33. HEX HEAD M8-40mm
34. FLANGE HEAD M6-20mm
36. FLAT HEAD M8-40mm
37. STUD M6-60mm
39. WASHER M5
40. WASHER M6
41. SPLIT WASHER M8
42. E CLIP
43. NUT M5
44. JAM NUT M6 x 2
45. REVERSE JAM NUT M6
46. MALE REVERSE ROD END M6
47. FEMALE ROD END M6
48. RETURN SPRING 40
49. PULL SWITCH STAY 16
50. NUT M8 (STOCK PART)