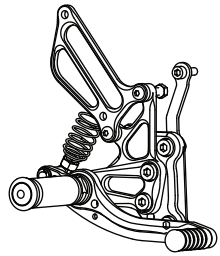
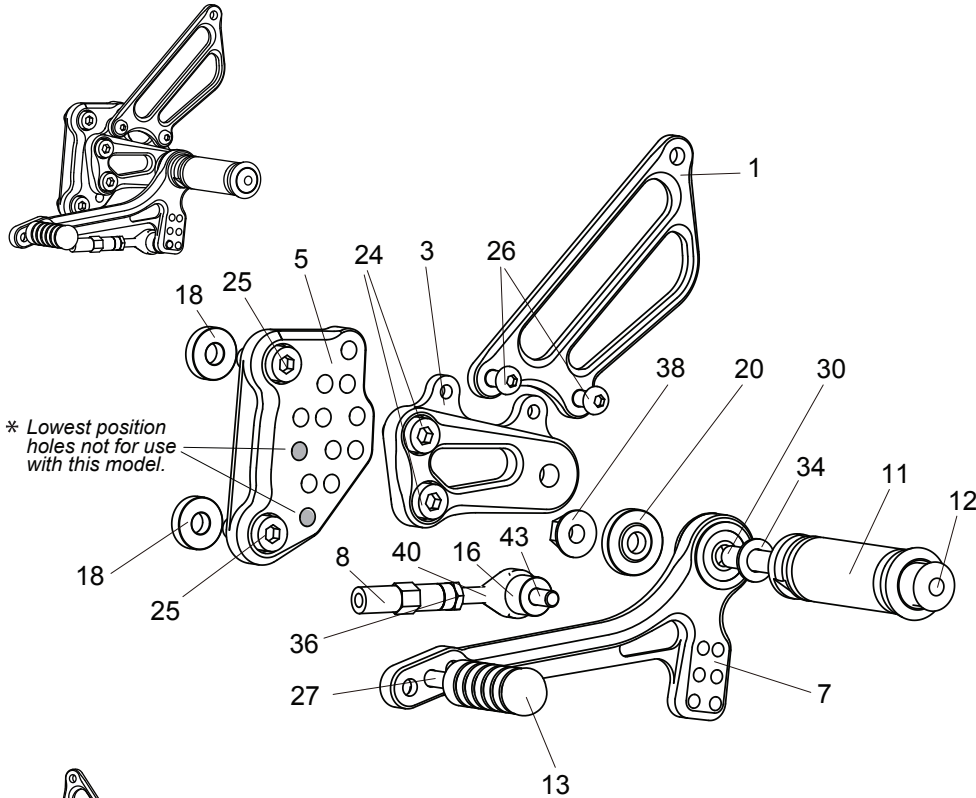
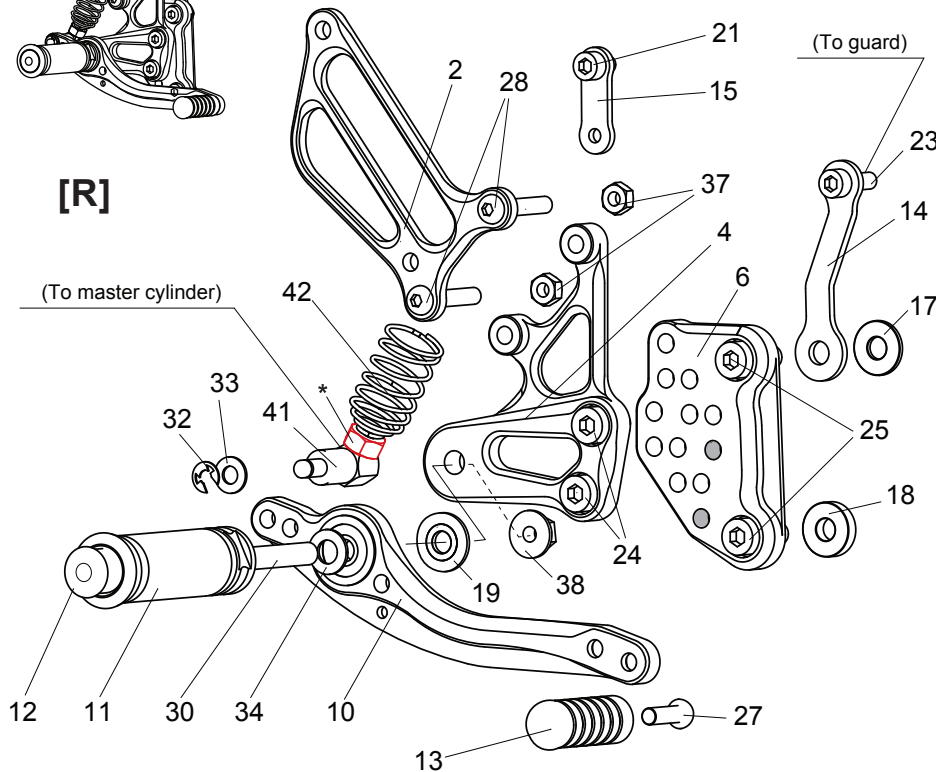


HONDA VFR800F '14- REAR SETS (For Quick Shifter equipped model)

part# H-VFR814RSQ



[R]



1. (L) HEEL GUARD [HG-2L]
2. (R) HEEL GUARD [HG-1R]
3. (L) STEP PLATE [H-VFR8SP-L]
4. (R) STEP PLATE [H-VFR8SP-R]
5. (L) BASE PLATE [H-VFR8BP-L]
6. (R) BASE PLATE [H-VFR8BP-R]
7. SHIFT PEDAL [SPD-0102]
8. SHIFT ROD 40 (SHORT) [SRD-40S]
10. BRAKE PEDAL [BPD-2]
11. FOOT PEG [PEG] x 2
12. FOOT PEG END CAP [ST-002] x 2
13. PEDAL TIP (DELRIN) [ST-001D18] x 2
14. HEAT GUARD BRACKET (BK)
15. BRACKET (BK) [UB-M625-B]
16. ROD END COLLAR 10 (BK) [RDEDCLR-10]
17. BASE PLATE COLLAR 2 (BK) [BPCLR-2]
18. BASE PLATE COLLAR 5 (BK) [BPCLR-5] x 3
19. BEARING COLLAR SUS [BGCLR-SUS]
20. BEARING COLLAR 5 (BK) [PEGBCLR-5B]
21. SOCKET HEAD M6x10mm [SBT-M610]
23. SOCKET HEAD M6x20mm [SBT-M620]
24. SOCKET HEAD M8x15mm [SBT-M815] x 4
25. SOCKET HEAD M8x20mm [SBT-M820] x 4
26. BUTTON HEAD M6x10mm [BBT-M610] x 2
27. BUTTON HEAD M6x20mm [BBT-M620] x 2
28. BUTTON HEAD M6x35mm [BBT-M635] x 2
30. STUD BOLT M8x55mm [STBT-S] x 2
32. E-CLIP [ECP-6]
33. WASHER M6 [WS-6]
34. PEG WASHER M8 [PWS-9] x 2
36. REVERSE JAM NUT M6 [JNT-6L]
37. NUT M6 [NUT-6] x 2
38. FLANGE NUT M8 [FNT-9] x 2
40. REVERSE MALE ROD END M6 [RDED-M6L]
41. BRAKE ROD M40 [BRD-M40]
42. RETURN SPRING 40 [RS-RSP]
43. SOCKET HEAD M6x30mm [SBT-M630]

Not pictured:

- BRAKE LIGHT SWITCH P-1.25 [BSW-125]
- BRAKE HOSE

* **NUT (STOCK HONDA PART)**

POSITIONS

*	1	10mm Forward	12.5mm Down
	2	10mm Forward	0mm
	3	0mm	0mm
	4	0mm	12.5mm Up
	5	10mm Back	12.5mm Up
	6	10mm Back	25mm Up

(All measurements are in relation to stock position - 0 mm)

* NOTE: **Position 1** (lowest position) is not for use on these 'Quickshifter' version Rear Sets.