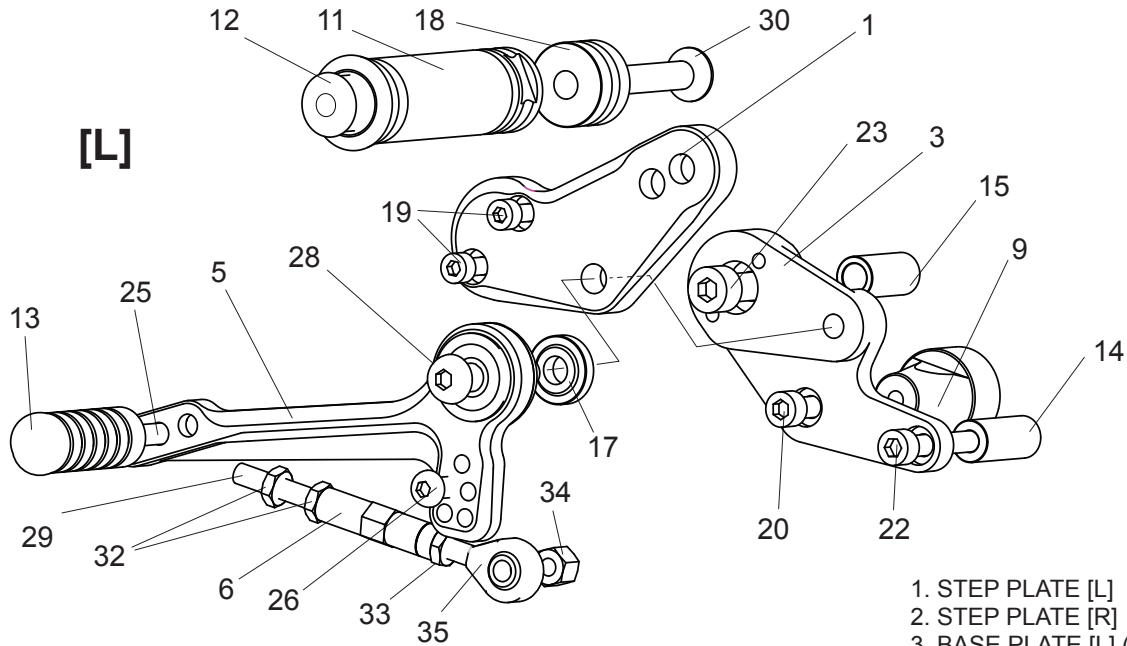


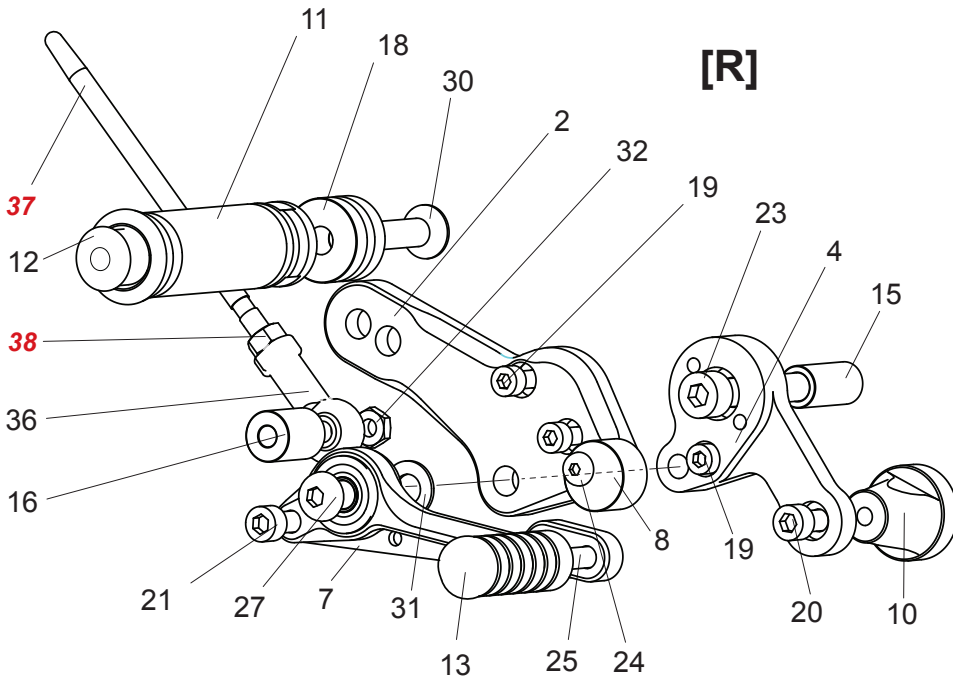
DUCATI SCRAMBLER 400/800 '15- / MONSTER 797 REAR SETS

part# D-SCRAMRS

[L]



[R]



1. STEP PLATE [L] [D-SCRAMSP-R]
 2. STEP PLATE [R] [D-SCRAMSP-R]
 3. BASE PLATE [L] (BK) [D-SCRAMBP-L]
 4. BASE PLATE [R] (BK) [D-SCRAMBP-R]
 5. SHIFT PEDAL [SPD-0912]
 6. SHIFT ROD 40 (BK) [SRD-40-B]
 7. BRAKE PEDAL [BPD-15]
 8. PEDAL STOPPER 12.5 (DELRIN) [BPD-STOPPER]
 9. BASE PLATE PIN 39L (BK)
 10. BASE PLATE PIN 33R (BK)
 11. FOOT PEG [PEG] (Includes end cap) x 2
 12. FOOT PEG END CAP [ST-002] x 2
 13. PEDAL TIP (DELRIN) [ST-001D / ST-001D18] x 2
 14. COLLAR 28-6 [CLR-28-6]
 15. COLLAR 25-8 [CLR-25-8] x 2
 16. COLLAR 19-6 [RDED-CLR19]
 17. BEARING COLLAR 5S (BK) [PEGBGCLR-5SB]
 18. FOOT PEG COLLAR 15 [PEGCLR-15] x 2
 19. SOCKET HEAD M5x15mm [SBT-M515] x 5
 20. SOCKET HEAD M6x15mm [SBT-M615] x 2
 21. SOCKET HEAD M6x40mm [SBT-M640]
 22. SOCKET HEAD M6x60mm [SBT-M660]
 23. SOCKET HEAD M6x45mm [SBT-M645] x 2
 24. BUTTON HEAD M5x20mm [BBT-M520]
 25. BUTTON HEAD M6x20mm [BBT-M620] x 2
 26. BUTTON HEAD M6x25mm [BBT-M625]
 27. BUTTON HEAD M8x35mm [BBT-M835]
 28. BUTTON HEAD M8x40mm [BBT-M840]
 29. STUD M6 [STUD-M6]
 30. FLAT HEAD M8x45mm [FBT-M845] x 2
 31. PEG WASHER M8 [PWS-8]
 32. JAM NUT M6 [JNT-6] x 3
 33. REVERSE JAM NUT M6 [JNT-6L]
 34. LOCK NUT M6 [LNT-6]
 35. MALE REVERSE ROD END M6 [RDED-M6L]
 36. FEMALE ROD END M6 [RDED-F6]
 - 37. PUSH ROD (STOCK PART)**
 - 38. NUT (STOCK PART)**
- BRAKE LIGHT SWITCH P-1.0 [BSW-1]
(Not Pictured)