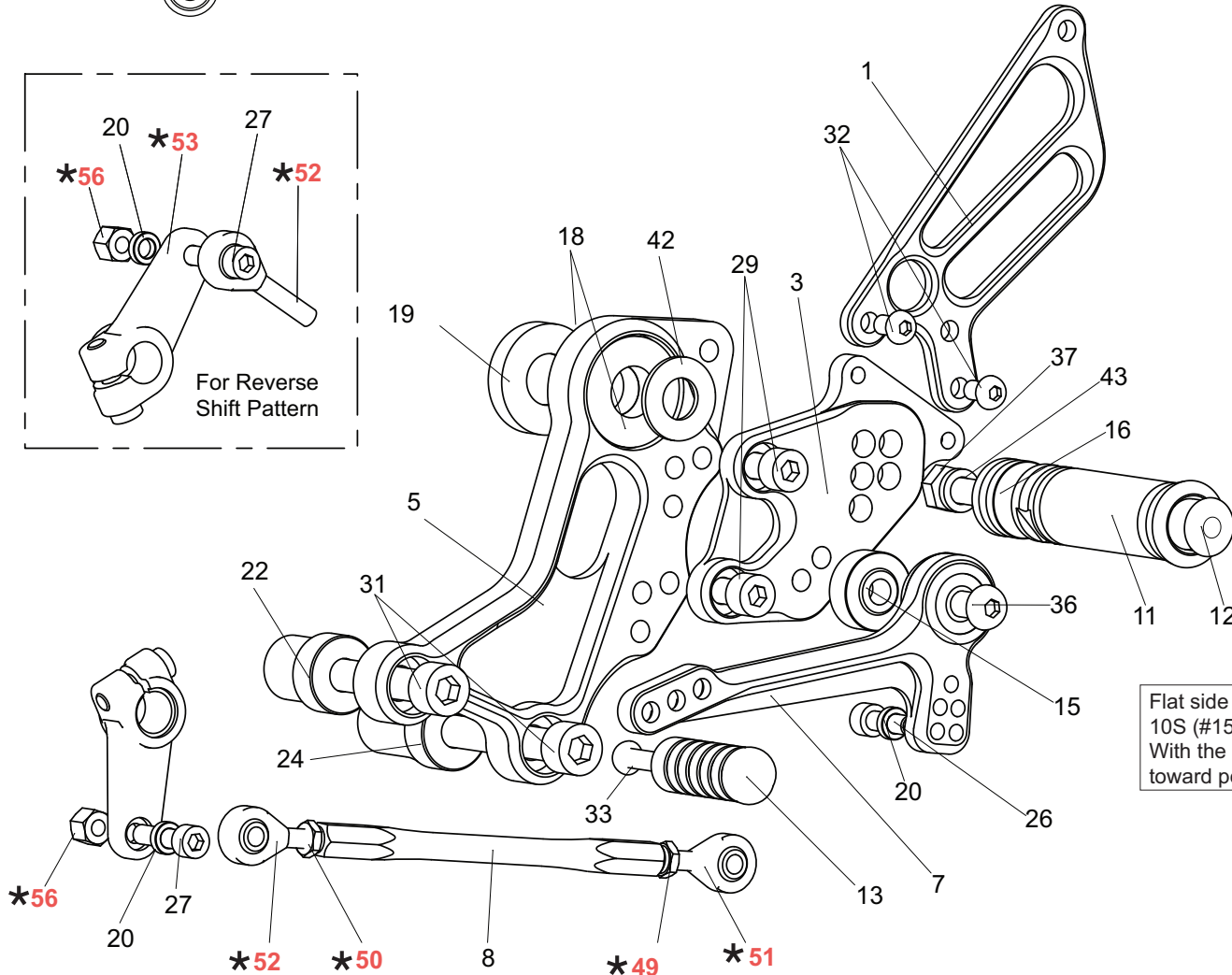
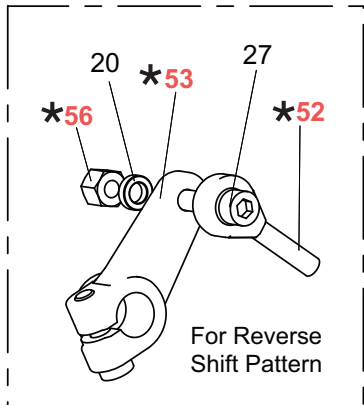
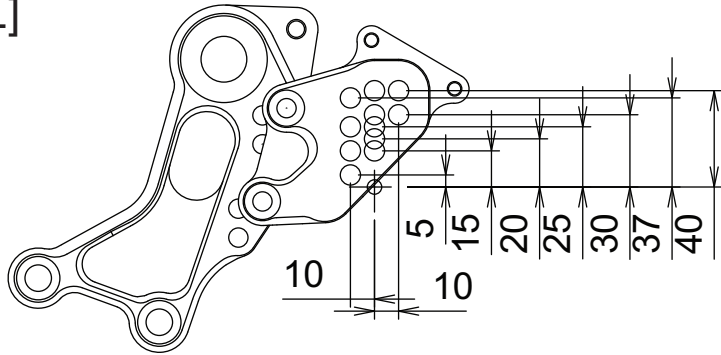


# DUCATI MONSTER 1100 EVO

## REAR SETS (# D-M1100ERS)



[L]



1. HEEL GUARD [L](HG-6L)
3. STEP PLATE [L]
5. BASE PLATE [L]
7. SHIFT PEDAL SCP65-75(SPD-0912)
8. SHIFT ROD 130
11. FOOT PEG
12. FOOT PEG END CAP
13. PEDAL TIP DELRIN
15. PEG BEARING COLLAR 10S(BK)
16. FOOT PEG COLLAR 12
18. COLLAR 3.5 (BK, PRE-INSTALLED) x2
19. COLLAR 7.5(BK)
20. ROD END COLLAR 3 x2
22. COLLAR 30-10(BK)
24. COLLAR 40-10(BK)
26. SOCKET HEAD M6-20
27. SOCKET HEAD M6-25
29. SOCKET HEAD M8-16 x2
31. SOCKET HEAD M10-65(P-1.5) x2
32. BUTTON HEAD M6-10 x2
33. BUTTON HEAD M6-20
36. BUTTON HEAD M8-35
37. HEX HEAD M8-40
42. WASHER M12
43. SPLIT WASHER M8
- \*49. NUT M6(DUCATI PARTS)
- \*50. NUT M6(DUCATI PARTS)
- \*51. MALE ROD END M6(DUCATI PARTS)
- \*52. MALE REVERSE ROD END M6(DUCATI PARTS)
- \*53. SHIFT ARM(DUCATI PARTS)
- \*56. NUT(DUCATI PARTS)

Flat side of foot peg bearing collar 10S (#15) should face step plate(#3). With the stepped side facing out toward pedal bearing.

Due to running improvements in the designs of Sato parts, some new replacement parts may look somewhat different than the original parts with the same part #. These slight differences are mostly cosmetic and have no effect on performance.

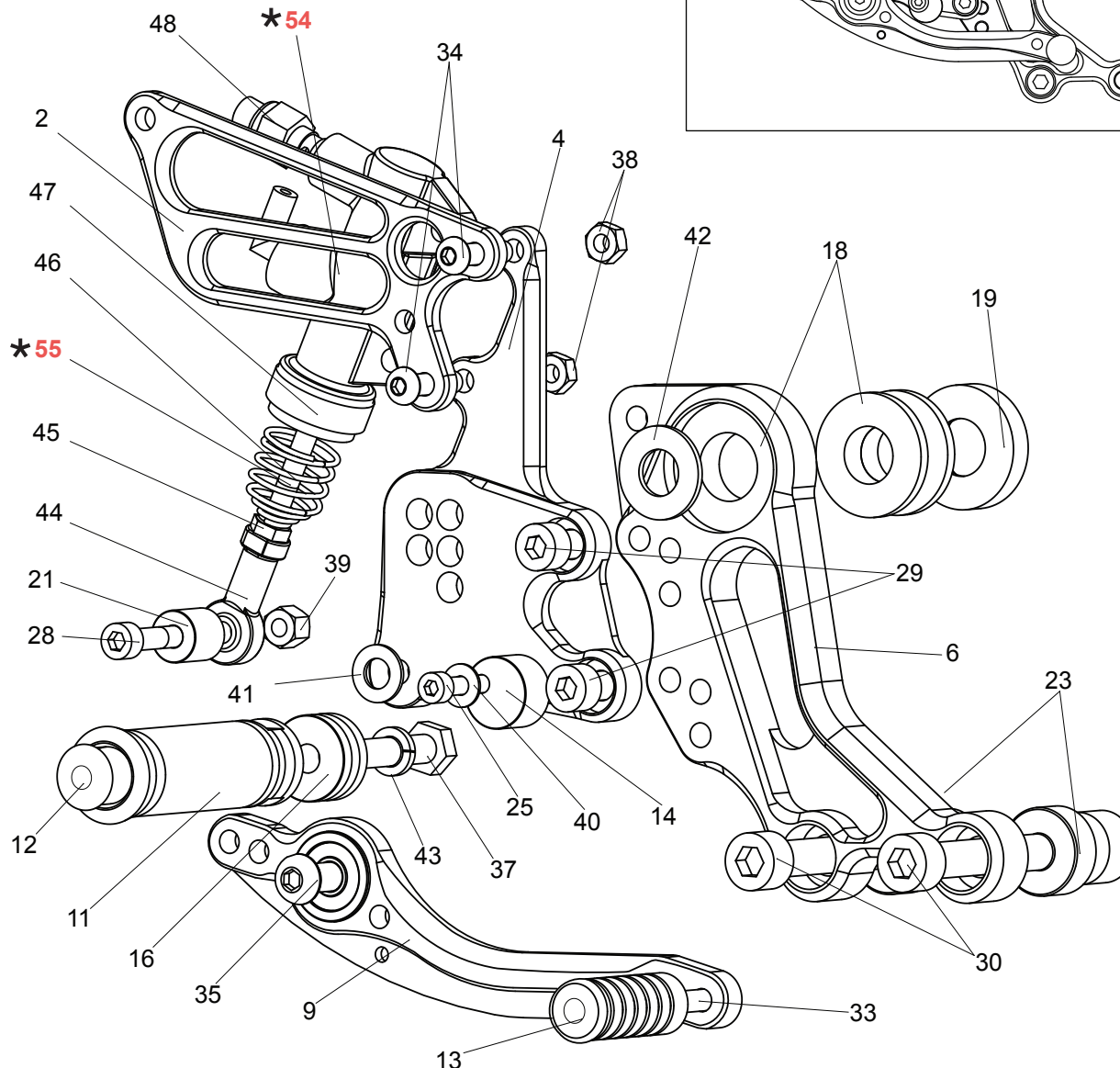
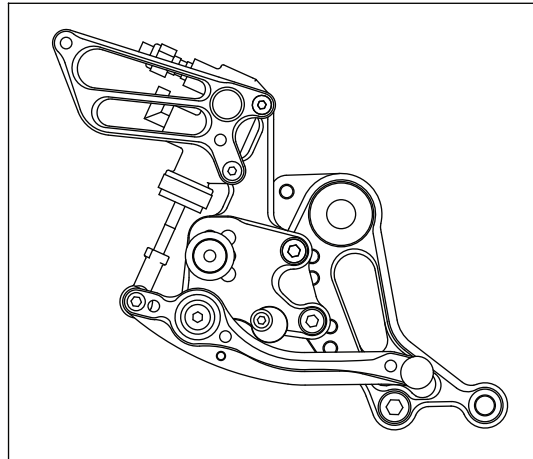
# DUCATI MONSTER 1100 EVO

## REAR SETS (# D-M1100ERS)



[R] **P-1.0 brake light switch included.**

Smooth front of PEG WASHER M8 (#41) should face pedal bearing, with the rougher, flat side facing STEP PLATE (#4).



- 2. HEEL GUARD [R](HG-6R)
- 4. STEP PLATE [R]
- 6. BASE PLATE [R]
- 9. BRAKE PEDAL 180b(BPD-14)
- 11. FOOT PEG
- 12. FOOT PEG END CAP
- 13. PEDAL TIP [DELRIN]
- 14. BRAKE PEDAL STOPPER
- 16. FOOT PEG COLLAR 12
- 18. COLLAR 3.5 (BK, PRE-INSTALLED) x2
- 19. COLLAR 7.5 (BK)
- 21. ROD END COLLAR 15 (BK)
- 23. COLLAR 33-10 (BK) x2
- 25. SOCKET HEAD M5-20
- 28. SOCKET HEAD M6-40
- 29. SOCKET HEAD M8-16 x2
- 30. SOCKET HEAD M10-60(P-1.5) x2
- 33. BUTTON HEAD M6-20
- 34. BUTTON HEAD M6-25 x2
- 35. BUTTON HEAD M8-25
- 37. HEX HEAD M8-40
- 38. NUT M6 x2
- 39. LOCK NUT M6
- 40. WASHER M5
- 41. PEG WASHER M8
- 42. WASHER M12
- 43. SPLIT WASHER M8
- 44. FEMALE ROD END 6-M8
- 45. SPRING HOOK NUT
- 46. RETURN SPRING40
- 47. RETURN SPRING COLLAR
- 48. BRAKE LIGHT SWITCH P-1.0
- \* 54. REAR MASTER CYLINDER (DUCATI PARTS)
- \* 55. PUSH ROD (DUCATI PARTS)

Due to running improvements in the designs of Sato parts, some new replacement parts may look somewhat different than the original parts with the same part #. These slight differences are mostly cosmetic and have no effect on performance.