

# HONDA CBR929/ 954RR REAR SETS

Part# H-954RS

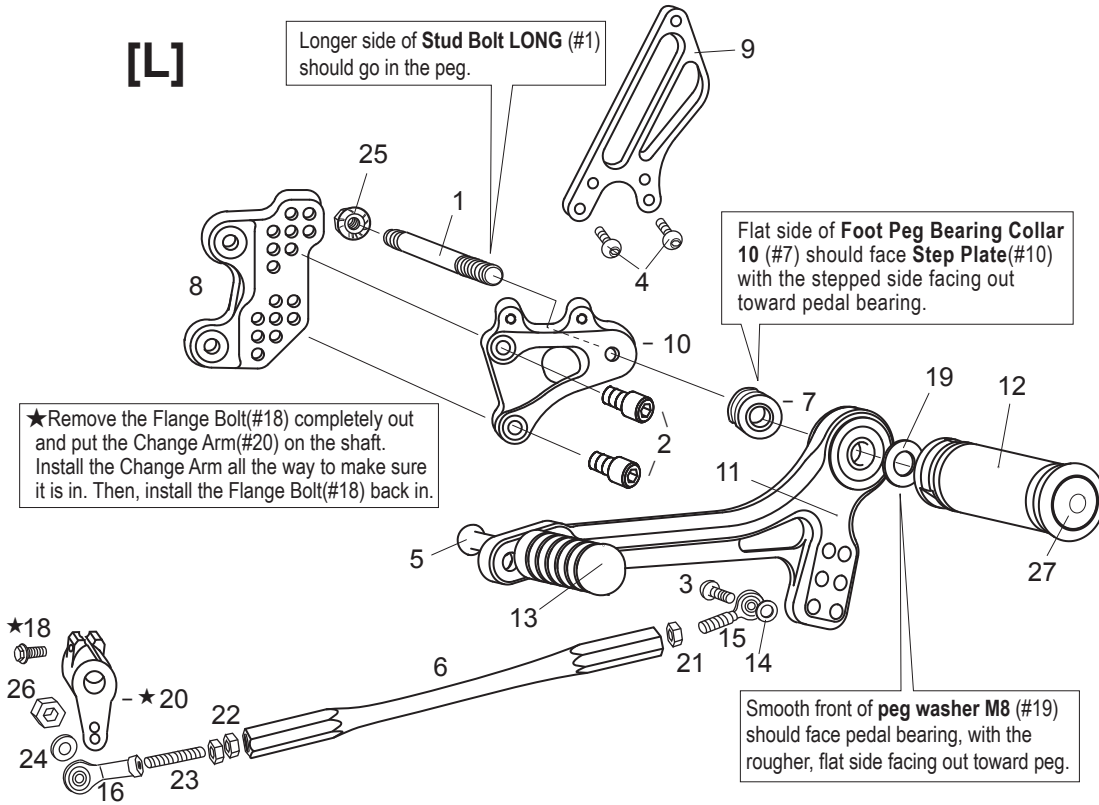
[L]

Longer side of Stud Bolt LONG (#1) should go in the peg.

Flat side of Foot Peg Bearing Collar (#7) should face Step Plate (#10) with the stepped side facing out toward pedal bearing.

Smooth front of peg washer M8 (#19) should face pedal bearing, with the rougher, flat side facing out toward peg.

★Remove the Flange Bolt(#18) completely out and put the Change Arm(#20) on the shaft. Install the Change Arm all the way to make sure it is in. Then, install the Flange Bolt(#18) back in.



[L] SIDE

1. STUD BOLT LONG (M8x65) [STBT-L]
2. SOCKET HEAD M8x15mm [SBT-M815] x2
3. BUTTON HEAD M6x20mm [BBT-M620]
4. BUTTON HEAD M6x10mm [BBT-M610] x2
5. BUTTON HEAD M6x20mm [BBT-M620]
6. SHIFT ROD 170 [SRD-170]
7. FOOT PEG BEARING COLLAR 10 [PEGBGCLR-10]
8. (L) BASE PLATE
9. (L) HEEL GUARD [HG-3L]
10. (L) STEP PLATE
11. SHIFT PEDAL 60-70 [SPD-0102]
12. FOOT PEG [PEG]
13. PEDAL TIP (DELRIN) [ST-001D]
14. ROD END COLLAR 3(GD) [RDED-CLR3]
15. MALE REVERSE ROD END M6 [RDED-M6L]
16. FEMALE ROD END M6 [RDED-MF6]
17. SOCKET HEAD M6x25mm [SBT-M625]
18. FLANGE HEAD M6x20mm [FGBT-M620]
19. PEG WASHER M8 [PWS-8]
20. CHANGE ARM L(BK) [CA-1]
21. REVERSE JAM NUT M6 [JNT-6L]
22. JAM NUT M6 [JNT-6] x2
23. STUD M6 [STUD-M6]
24. PLAIN WASHER M6 [WS-6]
25. FLANGE NUT M8 [FNT-8]
26. PLAIN NUT M6 [NUT-6]
27. FOOT PEG END CAP [ST-002]

[R]

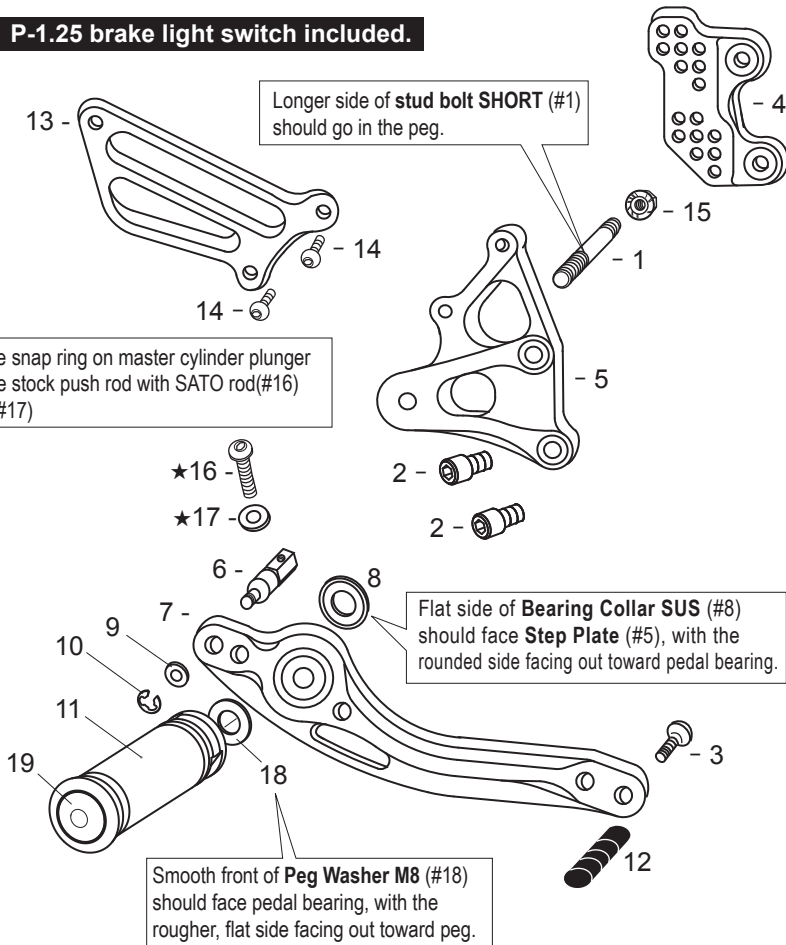
P-1.25 brake light switch included.

Longer side of stud bolt SHORT (#1) should go in the peg.

Flat side of Bearing Collar SUS (#8) should face Step Plate (#5), with the rounded side facing out toward pedal bearing.

Smooth front of Peg Washer M8 (#18) should face pedal bearing, with the rougher, flat side facing out toward peg.

★Remove the snap ring on master cylinder plunger to replace the stock push rod with SATO rod(#16) and washer(#17)



[R] SIDE

1. STUD BOLT SHORT (M8x55) [STBT-S]
2. SOCKET HEAD M8x15mm [SBT-M815] x2
3. BUTTON HEAD M6x20mm [BBT-M620]
4. (R) BASE PLATE
5. (R) STEP PLATE
6. BRAKE ROD M40 [BRD-M40]
7. BRAKE PEDAL 180 [BPD-2]
8. BEARING COLLAR SUS [BGCLR-SUS]
9. PLAIN WASHER M6 [PWS-6]
10. E-CLIP M6 [ECP-6]
11. FOOT PEG [PEG]
12. PEDAL TIP (DELRIN) [ST-001D]
13. (R) HEEL GUARD [HG-1R]
14. BUTTON HEAD M6x25mm [BBT-M625] x2
15. FLANGE NUT M8 [FNT-8]
16. BRAKE MASTER PUSH ROD
17. PLAIN WASHER M8 [WS-8]  
(NEED #16 & #17 FOR CBR954RR)
18. PEG WASHER M8 [PWS-8]
19. FOOT PEG END CAP [ST-002]

## POSITIONS

1	0mm	0mm
2	0mm	10mm Up
3	0mm	20mm Up
4	10mm Back	10mm Up
5	10mm Back	20mm Up
6	20mm Back	20mm Up
7	20mm Back	30mm Up
8	10mm Back	30mm Up

All measurements are in relation to stock position (0 mm)