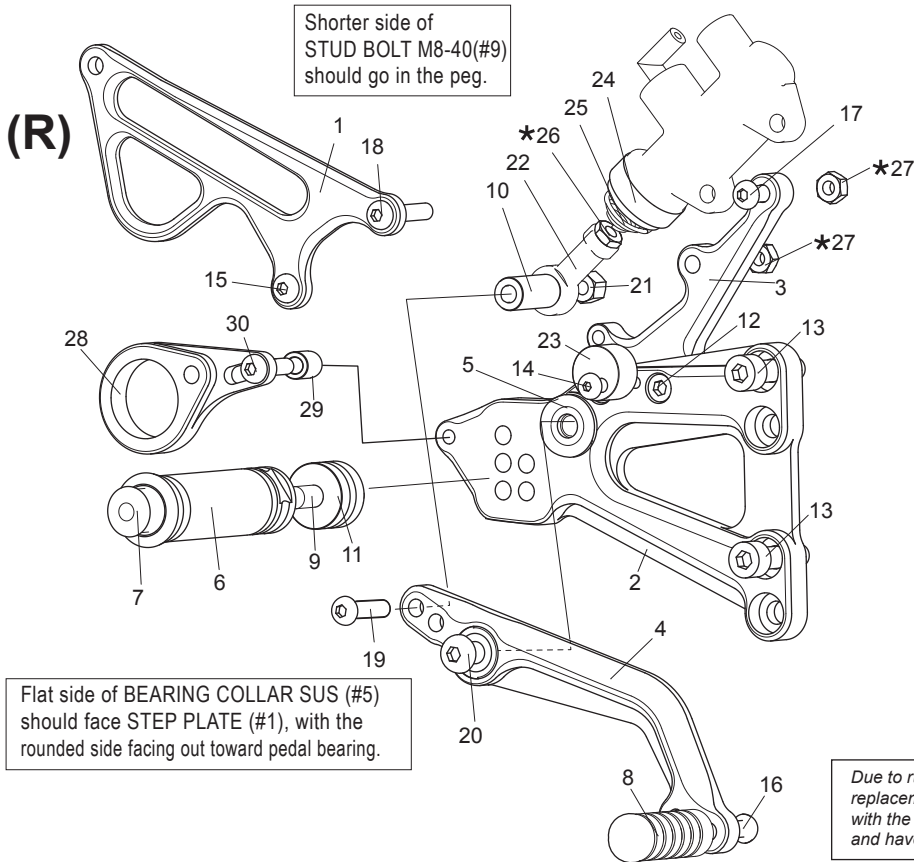


BMW S1000RR (ABS) "Forward/Up" REAR SETS

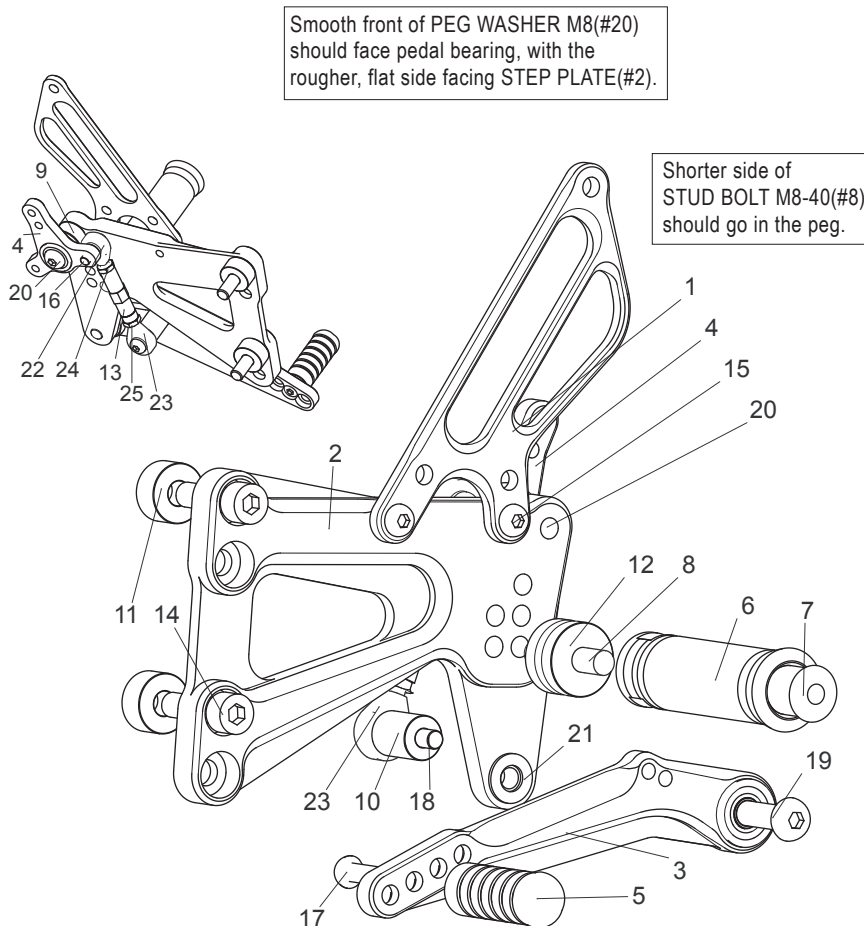


[R] SIDE

1. HEEL GUARD [R](HG24)
2. STEP PLATE [R]
3. MASTER STAY
4. BRAKE PEDAL WBP180 (BPD8)
5. BEARING COLLAR SUS
6. FOOT PEG
7. FOOT PEG END CAP
8. PEDAL TIP DELRIN
9. STUD BOLT M8-40
10. COLLAR 25-6(BK)
11. FOOT PEG COLLAR 12
12. SOCKET HEAD M6×15mm ×2
13. SOCKET HEAD M8×20mm ×2
14. BUTTON HEAD M5×20mm
15. BUTTON HEAD M6×10mm
16. BUTTON HEAD M6×20mm
17. BUTTON HEAD M6×25mm
18. BUTTON HEAD M6×30mm
19. BUTTON HEAD M6×50mm
20. BUTTON HEAD M8×25mm
21. LOCK NUT M6
22. FEMALE ROD END M6
23. PEDAL STOPPER 12.5 DELRIN
24. RETURN SPRING COLLAR(BK)
25. RETURN SPRING 20
- *26. NUT M6(STOCK)
- *27. NUT M6(STOCK) ×2
28. CANISTER BRACKET(BK)
29. COLLAR 9-6
30. BUTTON HEAD M6×20mm

Due to running improvements in the designs of Sato parts, some new replacement parts may look somewhat different than the original parts with the same part #. These slight differences are mostly cosmetic and have no effect on performance.

[L] SIDE



[L] SIDE

1. HEEL GUARD [L](HG14)
2. STEP PLATE [L]
3. SHIFT PEDAL WCP30(SPD16)
4. LINK 70-80(BK)
5. PEDAL TIP DELRIN
6. FOOT PEG
7. FOOT PEG END CAP
8. STUD BOLT M8×40mm
9. COLLAR 10-8(BK)
10. ROD END COLLAR 19(BK)
11. BASE PLATE COLLAR 10(BK) ×2
12. FOOT PEG COLLAR 12
13. SHIFT ROD 40(BK)
14. SOCKET HEAD M8×30mm ×2
15. BUTTON HEAD M6×10mm ×2
16. BUTTON HEAD M6×15mm
17. BUTTON HEAD M6×20mm
18. SOCKET HEAD M6×35mm
19. BUTTON HEAD M8×25mm
20. BUTTON HEAD M8×35mm
21. PEG WASHER M8
22. MALE ROD END M6
23. MALE REVERSE ROD END M6
24. JAM NUT M6
25. REVERSE JAM NUT M6

