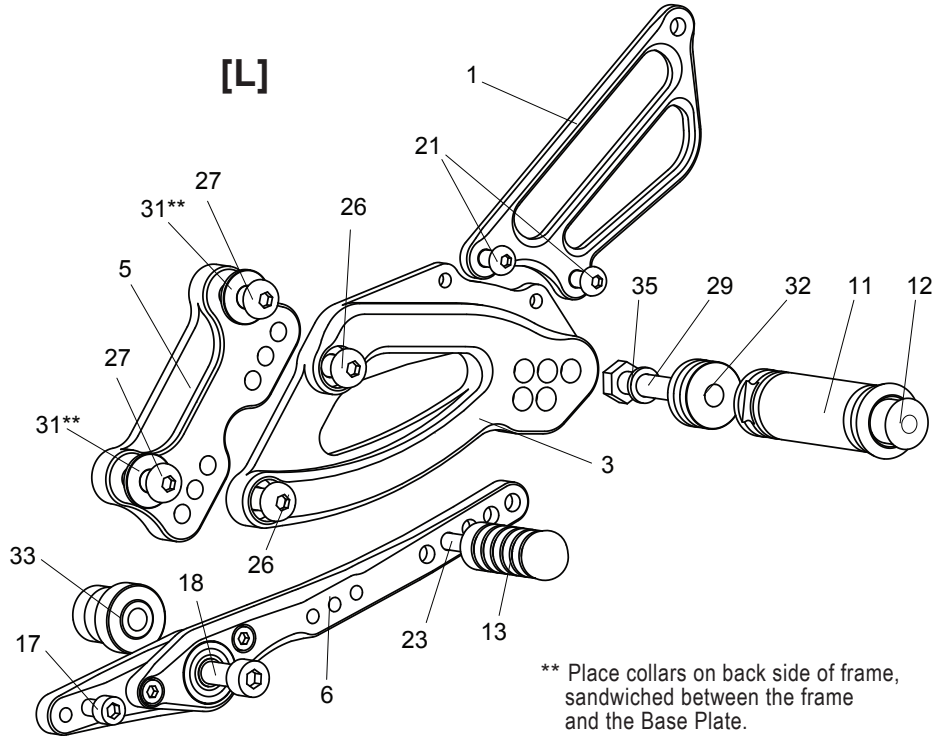
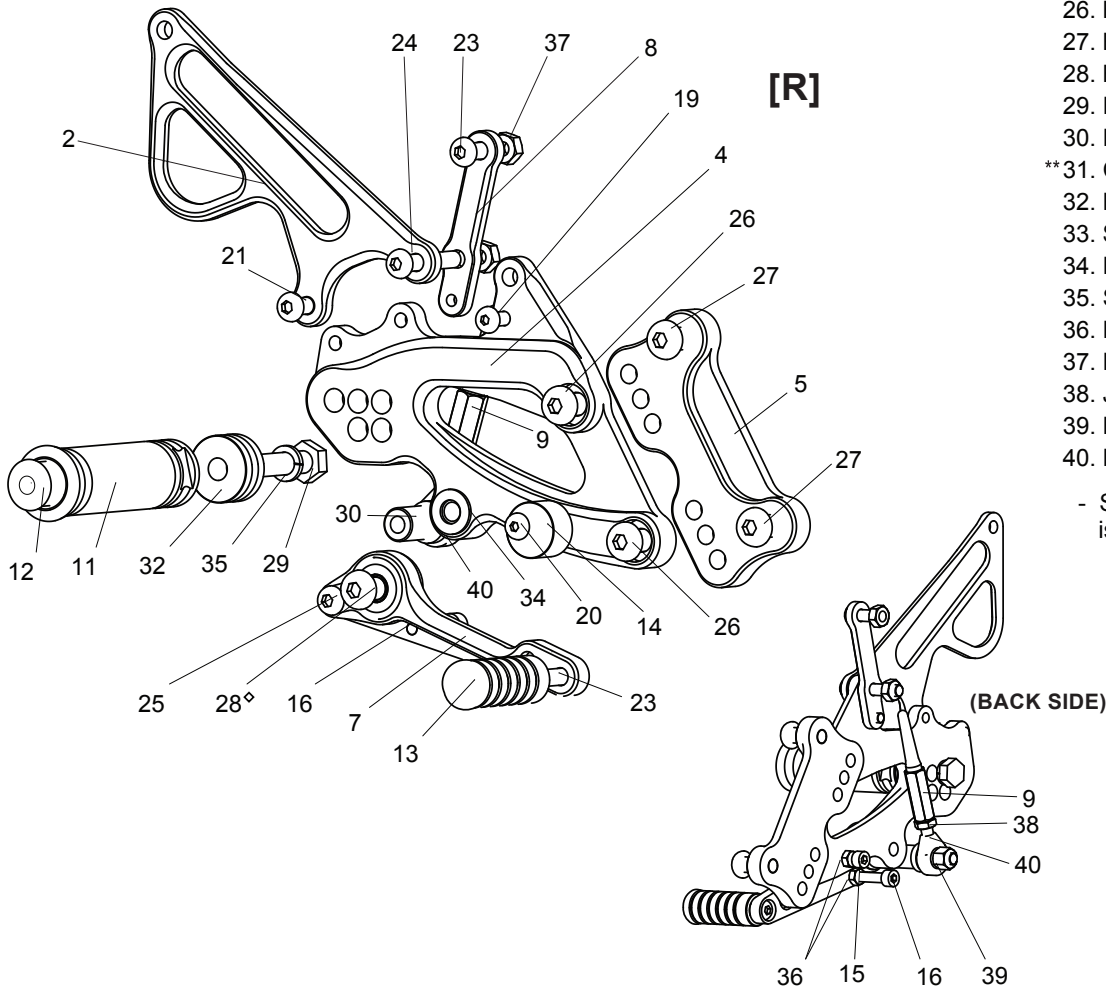


BMW S1000RR ('17-'18) REAR SETS (part# BMW-S117RS)



** Place collars on back side of frame, sandwiched between the frame and the Base Plate.

1. HEEL GUARD [HG-2L]
2. HEEL GUARD [HG-12R]
3. [L] STEP PLATE [BMW-S115SP-L]
4. [R] STEP PLATE [BMW-S115SP-R]
5. BASE PLATE (BK) [BMW-S115BP] x 2
6. SHIFT PEDAL [SPD-CP017B]
7. BRAKE PEDAL [BPD-15]
8. MASTER BASE (BK) [BMW-S115MB]
9. PUSH ROD 60 [PRD-60]
11. FOOT PEG [PEG] x 2
12. FOOT PEG END CAP [ST-002] x 2
13. PEDAL TIP [DELRIN] [ST-001D18] x 2
14. PEDAL STOPPER [DELRIN] [BPD-STOPPER]
15. SOCKET HEAD M5x10mm [SBT-M510]
16. SOCKET HEAD M5x25mm [SBT-M525]
17. SOCKET HEAD M6x18mm [SBT-M618]
18. SOCKET HEAD M8x65mm [SBT-M865]
19. BUTTON HEAD M5x15mm [BBT-M515]
20. BUTTON HEAD M5x20mm [BBT-M520]
21. BUTTON HEAD M6x10mm [BBT-M610] x 3
23. BUTTON HEAD M6x20mm [BBT-M620] x 3
24. BUTTON HEAD M6x35mm [BBT-M635]
25. BUTTON HEAD M6x50mm [BBT-M650]
26. BUTTON HEAD M8x15mm [BBT-M815] x 4
27. BUTTON HEAD M8x20mm [BBT-M820] x 4
28. BUTTON HEAD M8x25mm [BBT-M825]
29. HEX BOLT M8x40mm [HBT-M840] x 2
30. ROD END COLLAR 23 [RDED-CLR23]
- **31. COLLAR 2-8 (BK) [BPCLR-2] x 2
32. FOOT PEG COLLAR 12 [PEGCLR-12] x 2
33. SHIFT BASE COLLAR 27(BK) [SBCLR-27]
34. PEG WASHER M8 [PWS-8]
35. SPLIT WASHER M8 [SWS-8] x 2
36. NUT M5 [NUT-5] x 2
37. NUT M6 [NUT-6] x 2
38. JAM NUT M6 [JNT-6]
39. LOCK NUT M6 [LNT-6]
40. MALE ROD END M6 [RDED-M6]



- SPRING 8-25 (not pictured)
is pre-attached to part# 15/16