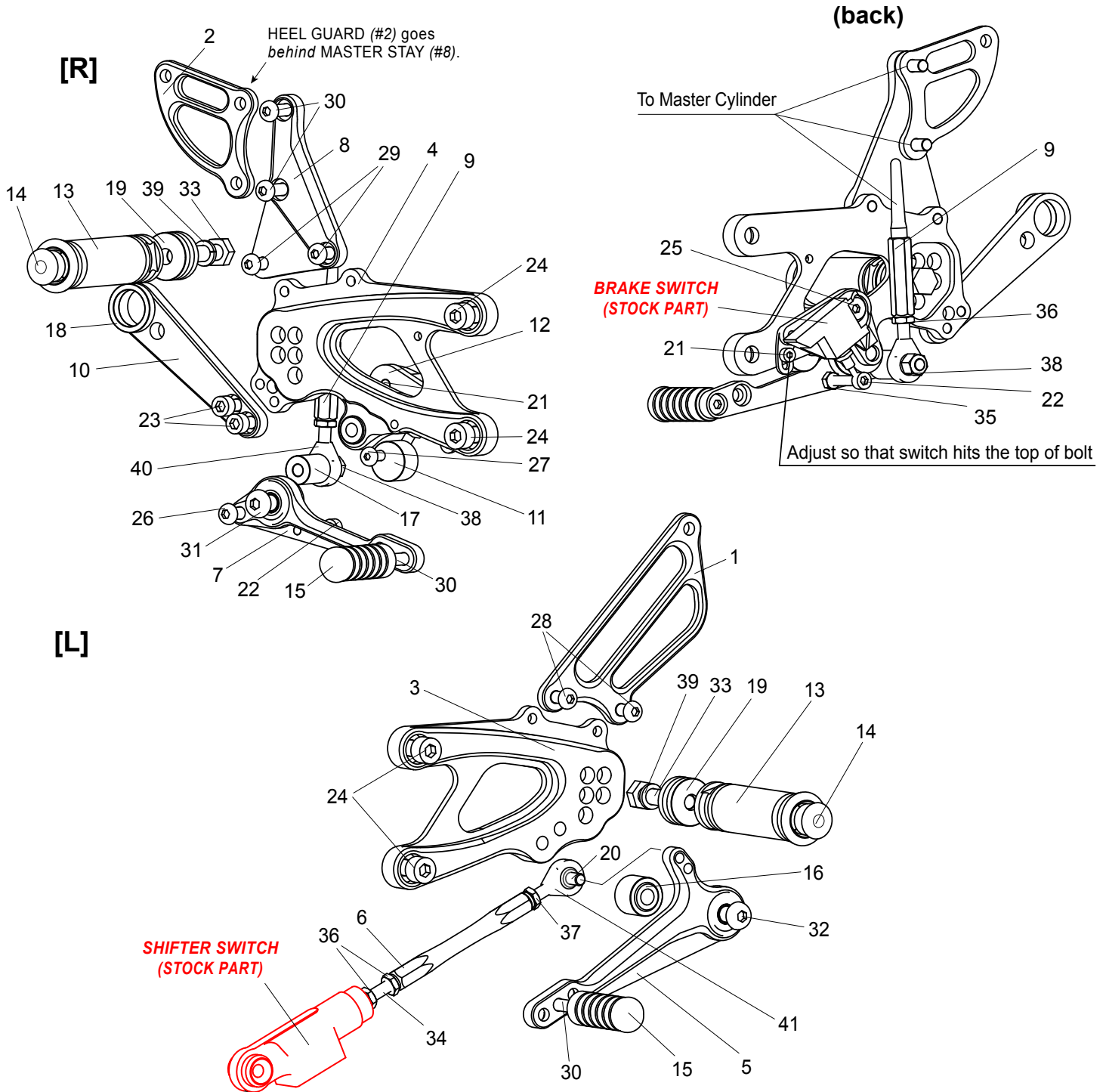


APRILIA RSV4 '17- / TUONO V4 1100 '17- REVERSE SHIFT REAR SETS

[A-RSV417RSR]



- | | | |
|---|---|--|
| <p>1. [L] HEEL GUARD [HG-2L]
2. [R] HEEL GUARD [HG-22R]
3. [L] STEP PLATE [A-RSV413SP-L]
4. [R] STEP PLATE [A-RSV417SP-R]
5. SHIFT PEDAL [SPD-SCP70]
6. SHIFT ROD 90 [SRD-90]
7. BRAKE PEDAL [BPD-15]
8. MASTER STAY [A-RSV413MS]
9. PUSH ROD 80 [PRD-80]
10. CANISTER BRACKET(BK) [CANBT-RSV417]
11. PEDAL STOPPER 12.5 (DELRIN) [BPD-STOPPER]
12. SWITCH BASE [A-RSV417SB]
13. FOOT PEG [PEG] x 2
14. FOOT PEG END CAP [ST-002] x 2</p> | <p>15. PEDAL TIP (DELRIN) [ST-001D18] x 2
16. BEARING COLLAR 15 (BK) [PEGBGCLR-15SB]
17. ROD END COLLAR 19 [RDED-CLR19]
18. COLLAR 5(BK) [CLR-5-18.5]
19. PEG COLLAR 12 [PEGCLR-12] x 2
20. HEX HEAD M6×18mm [HBT-M618]
21. SOCKET HEAD M4×6mm [SBT-M46]
22. SOCKET HEAD M5×30mm [SBT-M530]
23. SOCKET HEAD M6×10mm [SBT-M610] x 2
24. SOCKET HEAD M8×20mm [SBT-M820] x 4
25. FLAT HEAD M6×10mm [FBT-M610]
26. BUTTON HEAD M6×45mm [BBT-M645]
27. BUTTON HEAD M5×20mm [BBT-M520]
28. BUTTON HEAD M6×10mm [BBT-M610] x 2</p> | <p>29. BUTTON HEAD M6×12mm [BBT-M612] x 2
30. BUTTON HEAD M6×20mm [BBT-M620] x 4
31. BUTTON HEAD M8×30mm [BBT-M830]
32. BUTTON HEAD M8×40mm [BBT-M840]
33. HEX BOLT M8×40mm [HBT-M840] x 2
34. STUD M6×45mm [STUD-M6]
35. NUT M5 [NUT-5]
36. JAM NUT M6 [JNT-6] x 3
37. REVERSE JAM NUT M6 [JNT-6L]
38. LOCK NUT M6 [LNT-6]
39. SPLIT WASHER M8 [SWS-8] x 2
40. MALE ROD END M6 [RDED-M6]
41. MALE REVERSE ROD END M6 [RDED-M6L]</p> |
|---|---|--|