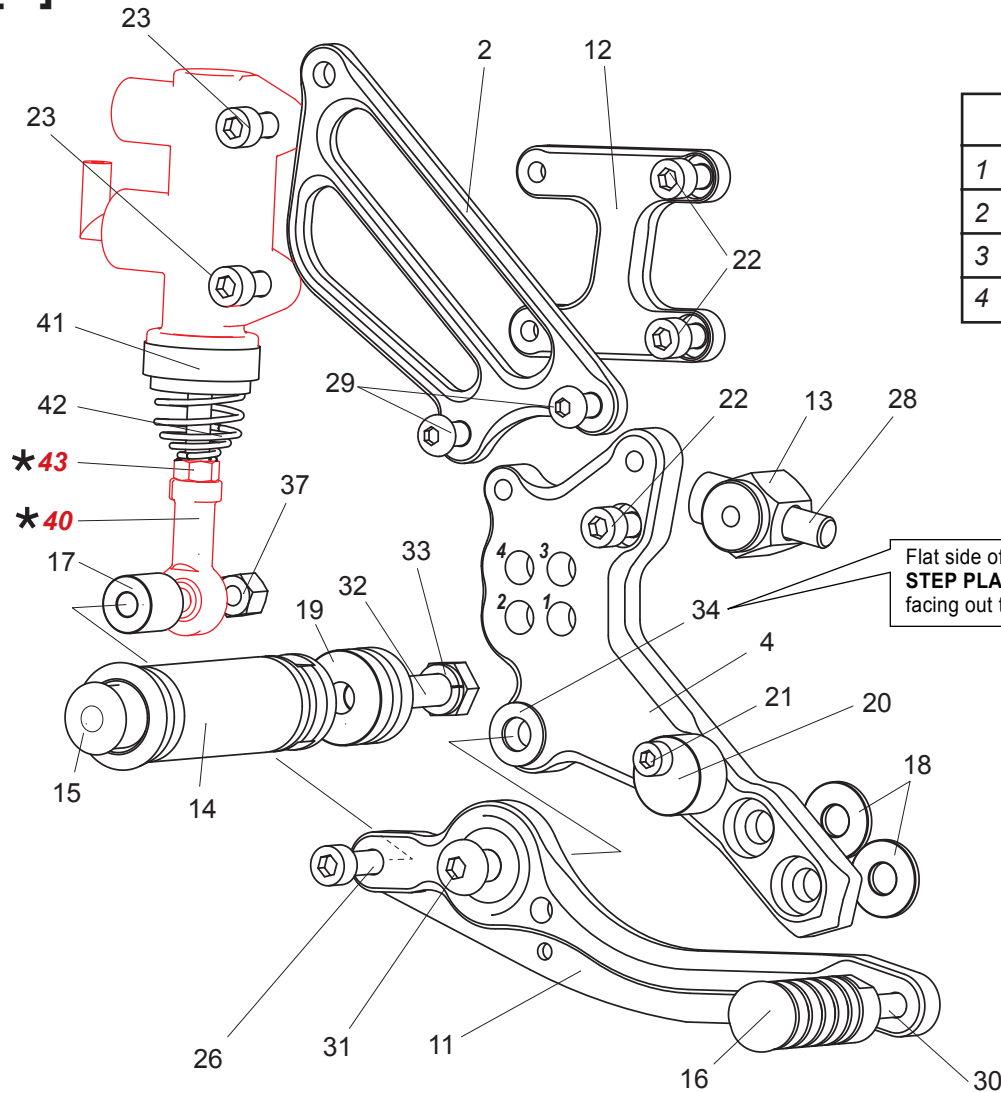


[R]



PEG POSITIONS

1	70mm Back	65mm Up
2	82.5mm Back	65mm Up
3	70mm Back	77.5mm Up
4	82.5mm Back	77.5mm Up

All measurements are in relation to stock footpeg position (0 mm).

Flat side of PEG WASHER M8 (#34) should face STEP PLATE (#4), with the smoother, rounded side facing out towards the Brake Pedal bearings.

- 2. [R] HEEL GUARD [HG-2R]
- 4. [R] STEP PLATE [KTM-69012SP-R]
- 11 BRAKE PEDAL [BPD-3]
- 12. MASTER BASE (BK) [KTM-69012MB]
- 13. ANGLE NUT [KTM-69012RS-ANUT]
- 14. FOOT PEG [PEG]
- 15. FOOT PEG END CAP [ST-002]
- 16. PEDAL TIP (DELRIN) [ST-001D18]
- 17. ROD END COLLAR 15 (BK) [RDED-CLR15]
- 18. BASE PLATE COLLAR 2 (BK) [BPCLR2] x 2
- 19. FOOT PEG COLLAR 15 [PEGCLR-15]
- 20. BRAKE PEDAL STOPPER (DELRIN) [BPD-STOPPER]
- 21. SOCKET HEAD M5x20mm [SBT-M520]
- 22. SOCKET HEAD M6x10mm [SBT-M610] x 3
- 23. SOCKET HEAD M6x16mm [SBT-M616] x 2
- 26. SOCKET HEAD M6x40mm [SBT-M640]
- 28. SOCKET HEAD M8x30mm [SBT-M830]
- 29. BUTTON HEAD M6x10mm [BBT-M610] x 2
- 30. BUTTON HEAD M6x20mm [BBT-M620]
- 31. BUTTON HEAD M8x25mm [BBT-M825]
- 32. HEX HEAD M8x40mm [HBT-M840]
- 33. SPLIT WASHER M8 [SWS-8]
- 34. PEG WASHER M8 [PWS-8]
- 37. LOCK NUT M6 [LNT-6]
- ★ 40. FEMALE ROD END M6 (KTM PARTS)
- 41. BRAKE RETURN SPRING COLLAR2 [RS-RSCLR2]
- 42. RETURN SPRING 20 [RS-RSP2]
- ★ 43. NUT (KTM PARTS)