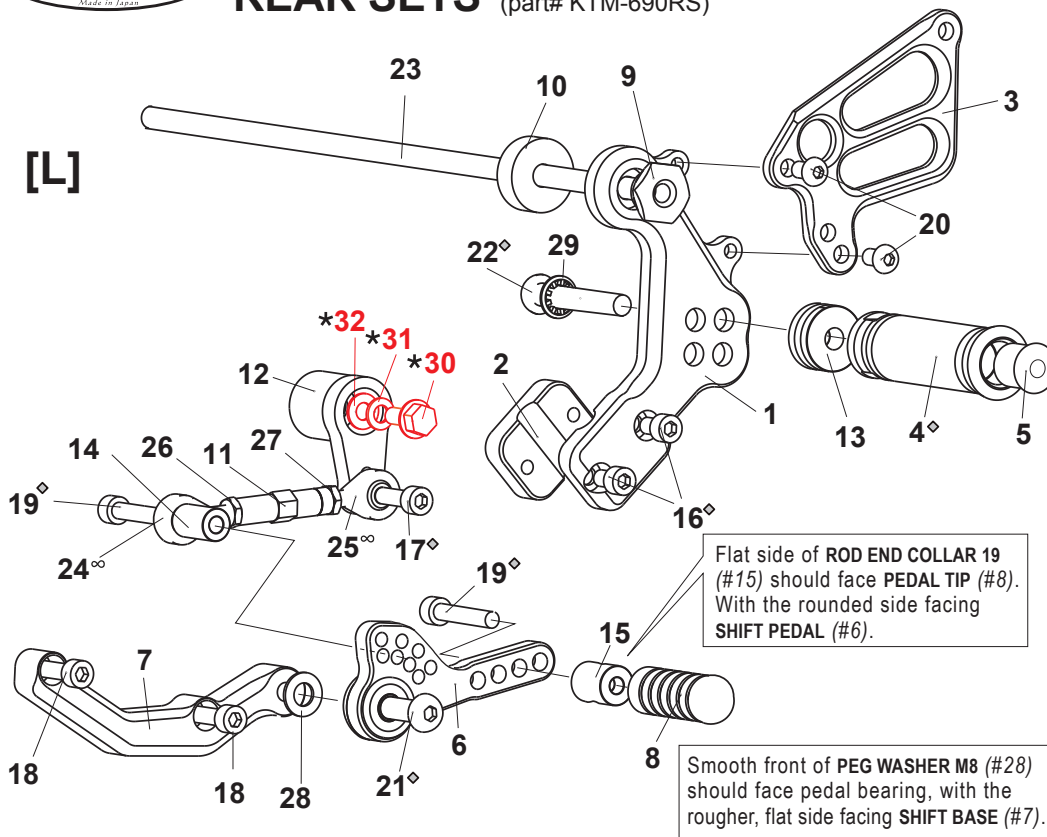


KTM 690 DUKE (-'11) REAR SETS (part# KTM-690RS)

[L]

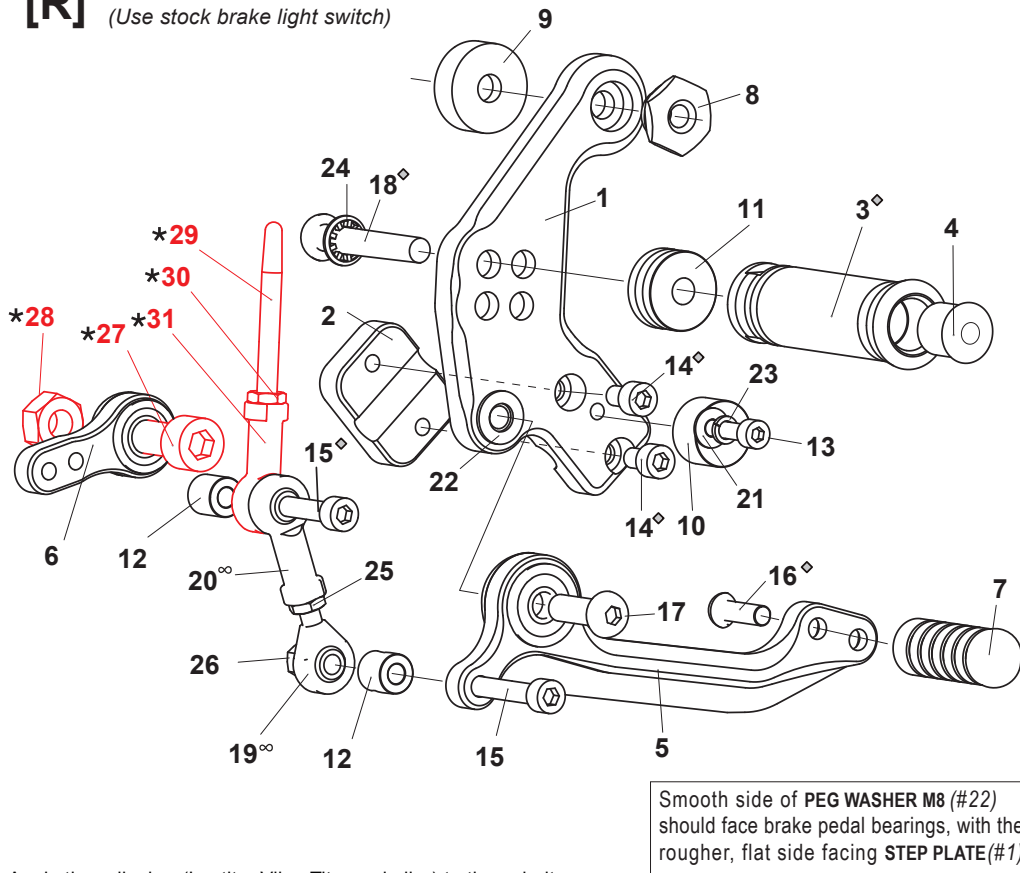


[L]-SIDE

1. (L) STEP PLATE
2. STEP PLATE CLAMP(BK)
3. (L) HEEL GUARD [HG-20L]
4. FOOT PEG
5. FOOT PEG END CAP
6. SHIFT PEDAL(BK) [SPD-15]
7. SHIFT BASE(BK)
8. PEDAL TIP (DELRIN) [ST-001D18]
9. PIVOT NUT DUKE690 M8(BK)
10. COLLAR DUKE690(BK)
11. SHIFT ROD 40 [SRD-40]
12. CHANGE ARM (BK) [CA-KTM]
13. FOOT PEG COLLAR 12
14. COLLAR 20-6(BK)
15. ROD END COLLAR 19(BK)
16. SOCKET HEAD M6×10mm ×2
17. SOCKET HEAD M6×20mm
18. SOCKET HEAD M6×30mm ×2
19. SOCKET HEAD M6×40mm ×2
20. BUTTON HEAD M6×10mm ×2
21. BUTTON HEAD M8×25mm
22. BUTTON HEAD M8×40mm
23. BOLT M8×325mm
24. MALE ROD END M6
25. MALE REVERSE ROD END M6
26. JAM NUT M6
27. REVERSE JAM NUT M6
28. PEG WASHER M8
29. INTERNAL STAR WASHER M8
- *30. FLANGE BOLT (Stock Part)
- *31. LOCK WASHER (Stock Part)
- *32. WASHER (Stock Part)

[R]

(Use stock brake light switch)



[R]-SIDE

1. (R) STEP PLATE
2. STEP PLATE CLAMP(BK)
3. FOOT PEG
4. FOOT PEG END CAP
5. BRAKE PEDAL [BPD-16]
6. BRAKE LINK 35-M10(BK)
7. PEDAL TIP (DELRIN) [ST-001D18]
8. PIVOT NUT DUKE690 M8(BK)
9. COLLAR DUKE690(BK)
10. BRAKE PEDAL STOPPER (DELRIN)
11. FOOT PEG COLLAR 12
12. COLLAR 12-6(BK) ×2
13. SOCKET HEAD M5×20mm
14. SOCKET HEAD M6×10mm ×2
15. SOCKET HEAD M6×40mm ×2
16. BUTTON HEAD M6×20mm
17. BUTTON HEAD M8×25mm
18. BUTTON HEAD M8×35mm
19. MALE ROD END M6
20. FEMALE ROD END M6
21. PLAIN WASHER M5
22. PEG WASHER M8
23. SPLIT WASHER M5
24. INTERNAL STAR WASHER M8
25. JAM NUT M6
26. LOCK NUT M6
- *27. SOCKET HEAD M10 (Stock Part)
- *28. HEX NUT M10 (Stock Part)
- *29. PUSH ROD (Stock Part)
- *30. ROD END (Stock Part)
- *31. NUT (Stock Part)

◇ Apply threadlocker (Loctite, Vibra Tite or similar) to these bolts before tightening.

(Factory pre-tightened parts have already been Loctited.)

∞ Clean and lubricate rod end ball joints periodically.