

# KAWASAKI ZX-6R/636 ('05-'08)

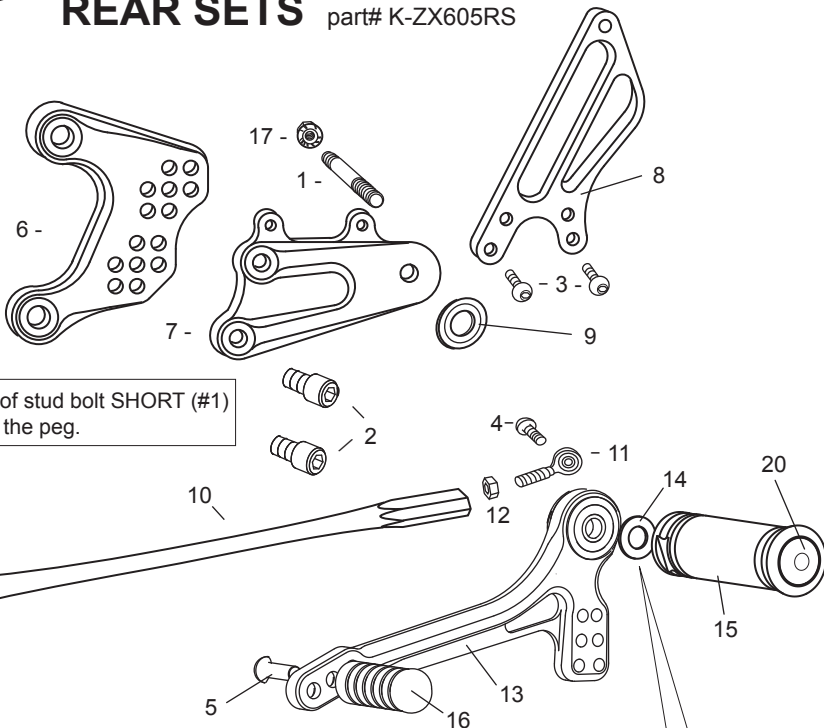
## REAR SETS part# K-ZX605RS

### [L] SIDE

1. STUD BOLT SHORT (M8x55) [STBT-S]
2. SOCKET HEAD M8-15mm [SBT-M815] x 2
3. BUTTON HEAD M6-10mm [BBT-M610] x 2
4. BUTTON HEAD M6-15mm [BBT-M615]
5. BUTTON HEAD M6-20mm [BBT-M620]
6. (L) BASE PLATE [K-ZX605BP-L]
7. (L) STEP PLATE [K-ZX605SP-L]
8. (L) HEEL GUARD [HG-3L]
9. BEARING COLLAR SUS [BGCLR-SUS]
10. SHIFT ROD 205 [SRD-205]
11. MALE ROD END M6 [RDED-M6]
12. JAM NUT M6 [JNT-6]
13. SHIFT PEDAL 60-70 [SPD-0102]
14. PEG WASHER M8 [PWS-8]
15. FOOT PEG [PEG]
16. PEDAL TIP (DELRIN) [ST-001D]
17. FLANGE NUT M8 [FNT-8]
18. SOCKET HEAD M6-30mm [SBT-M630]\*
19. PLAIN NUT M6 [NUT-6]\*
20. FOOT PEG END CAP [ST-002]

\*INSTALL WITH STOCK CHANGE ARM FOR REVERSE PATTERN FOR THE '07-'08 MODEL

[L]



Longer side of stud bolt SHORT (#1) should go in the peg.

Flat side of BEARING COLLAR SUS (#9) should face STEP PLATE (#7), with the rounded side facing out toward pedal bearing.

Smooth front of peg washer M8 (#14) should face pedal bearing, with the rougher, flat side facing out toward peg.

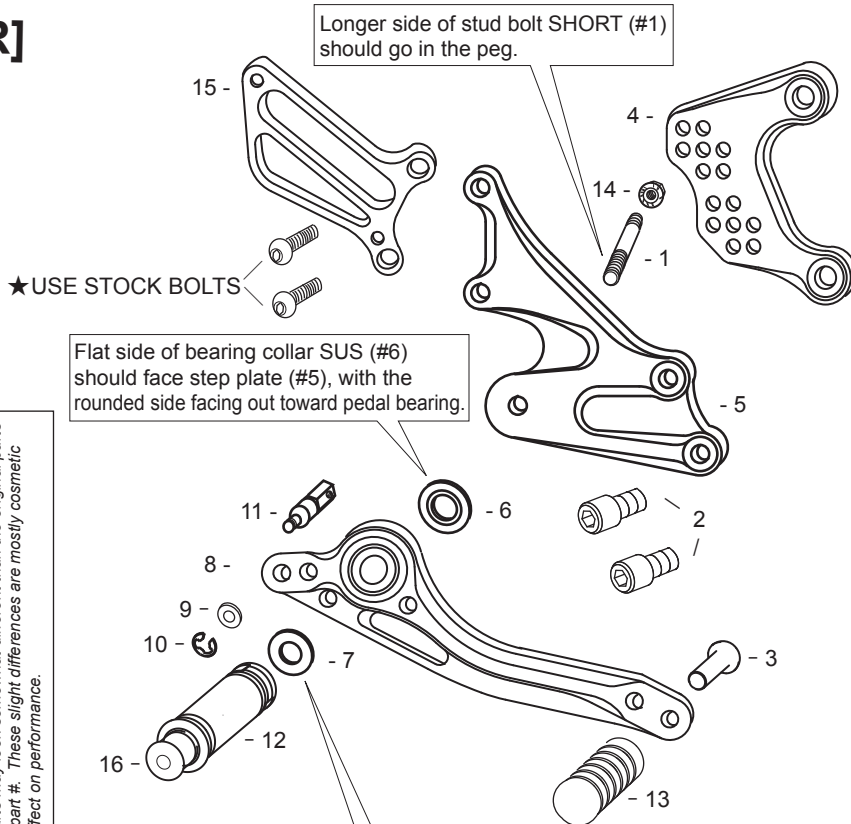
※ADJUST THE STOCK CHANGE ARM WHEN INSTALLING SATO REAR SETS.

### P-1.25 brake light switch included.

### [R] SIDE

1. STUD BOLT SHORT (M8x55) [STBT-S]
2. SOCKET HEAD M8-15mm [SBT-M815] x 2
3. BUTTON HEAD M6-20mm [BBT-M620]
4. (R) BASE PLATE [K-ZX605BP-R]
5. (R) STEP PLATE [K-ZX605SP-R]
6. BEARING COLLAR SUS [BGCLR-SUS]
7. PEG WASHER M8 [PWS-8]
8. BRAKE PEDAL 150 [BPD-1]
9. PLAIN WASHER M6 [WS-6]
10. E-CLIP M6 [ECP-6]
11. BRAKE ROD M40 [BRD-40]
12. FOOT PEG [PEG]
13. PEDAL TIP (DELRIN) [ST-001D]
14. FLANGE NUT M8 [FNT-8]
15. [R] HEEL GUARD [HG-9R]
16. FOOT PEG END CAP [ST-002]

[R]



Longer side of stud bolt SHORT (#1) should go in the peg.

★USE STOCK BOLTS

Flat side of bearing collar SUS (#6) should face step plate (#5), with the rounded side facing out toward pedal bearing.

Smooth front of peg washer M8 (#7) should face pedal bearing, with the rougher, flat side facing out toward peg.

Due to running improvements in the designs of Sato parts, some new replacement parts may look somewhat different than the original parts with the same part #. These slight differences are mostly cosmetic and have no effect on performance.

### POSITIONS

|   |           |         |
|---|-----------|---------|
| 1 | 10mm Back | 20mm Up |
| 2 | 10mm Back | 30mm Up |
| 3 | 20mm Back | 20mm Up |
| 4 | 20mm Back | 30mm Up |
| 5 | 20mm Back | 40mm Up |
| 6 | 30mm Back | 30mm Up |
| 7 | 30mm Back | 40mm Up |

All measurements are in relation to stock position (0 mm)