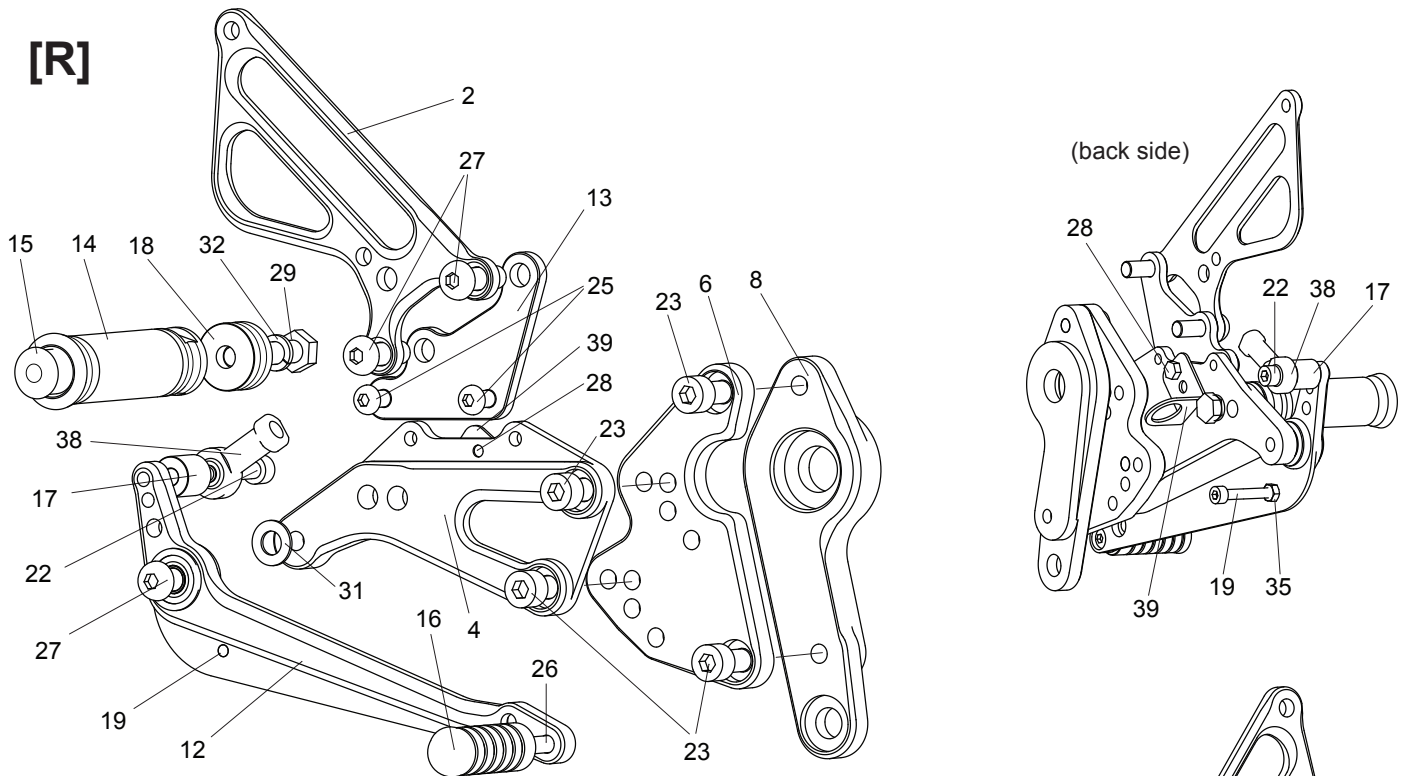
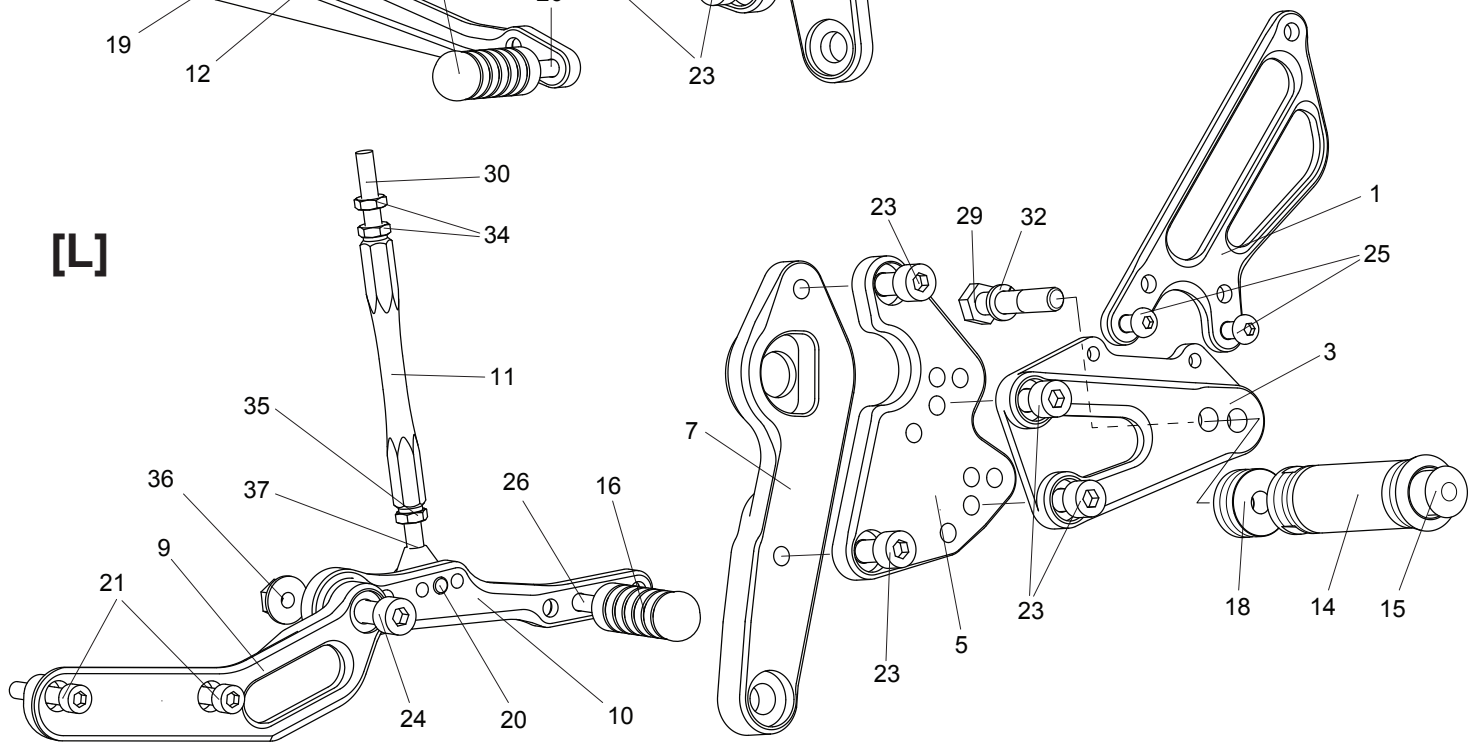


[R]



[L]



- | | | | |
|--------------------------------|------------------------------|----------------------------|-----------------------------|
| 1. [L] HEEL GUARD [HG-3L] | 11. SHIFT ROD 100 (BK) | 21. SOCKET HEAD M6x35 (x2) | 31. PEG WASHER M8 |
| 2. [R] HEEL GUARD [HG-23R] | 12. BRAKE PEDAL [BPD-RS4125] | 22. SOCKET HEAD M6x30 | 32. SPLIT WASHER M8 (x2) |
| 3. STEP PLATE [L] | 13. MASTER STAY | 23. SOCKET HEAD M8x15 (x8) | 33. NUT M5 |
| 4. STEP PLATE [R] | 14. FOOT PEG (x2) | 24. SOCKET HEAD M8x35 | 34. JAM NUT M6 (x2) |
| 5. EXTENSION PLATE [L] (BK) | 15. FOOT PEG END CAP (x2) | 25. BUTTON HEAD M6x10 (x4) | 35. REVERSE JAM NUT M6 |
| 6. EXTENSION PLATE [R] (BK) | 16. PEDAL TIP [DELRIN] (x2) | 26. BUTTON HEAD M6x20 (x2) | 36. FLANGE NUT M8 |
| 7. BASE PLATE [L] (BK) | 17. BRAKE ROD COLLAR 15 (BK) | 27. BUTTON HEAD M8x25 (x3) | 37. MALE REVERSE ROD END M6 |
| 8. BASE PLATE [R] (BK) | 18. PEG COLLAR 12 (x2) | 28. HEX BOLT M5x6 | 38. FEMALE ROD END M6-8 |
| 9. SHIFT BASE (BK) | 19. SOCKET HEAD M5x35 | 29. HEX BOLT M8x40 (x2) | 39. PULL SWITCH STAY 16 |
| 10. SHIFT PEDAL SPD-CP016 (BK) | 20. SOCKET HEAD M6x18 | 30. STUD M6 | 40. BRAKE RETURN SPRING 40 |

(Not Pictured)