

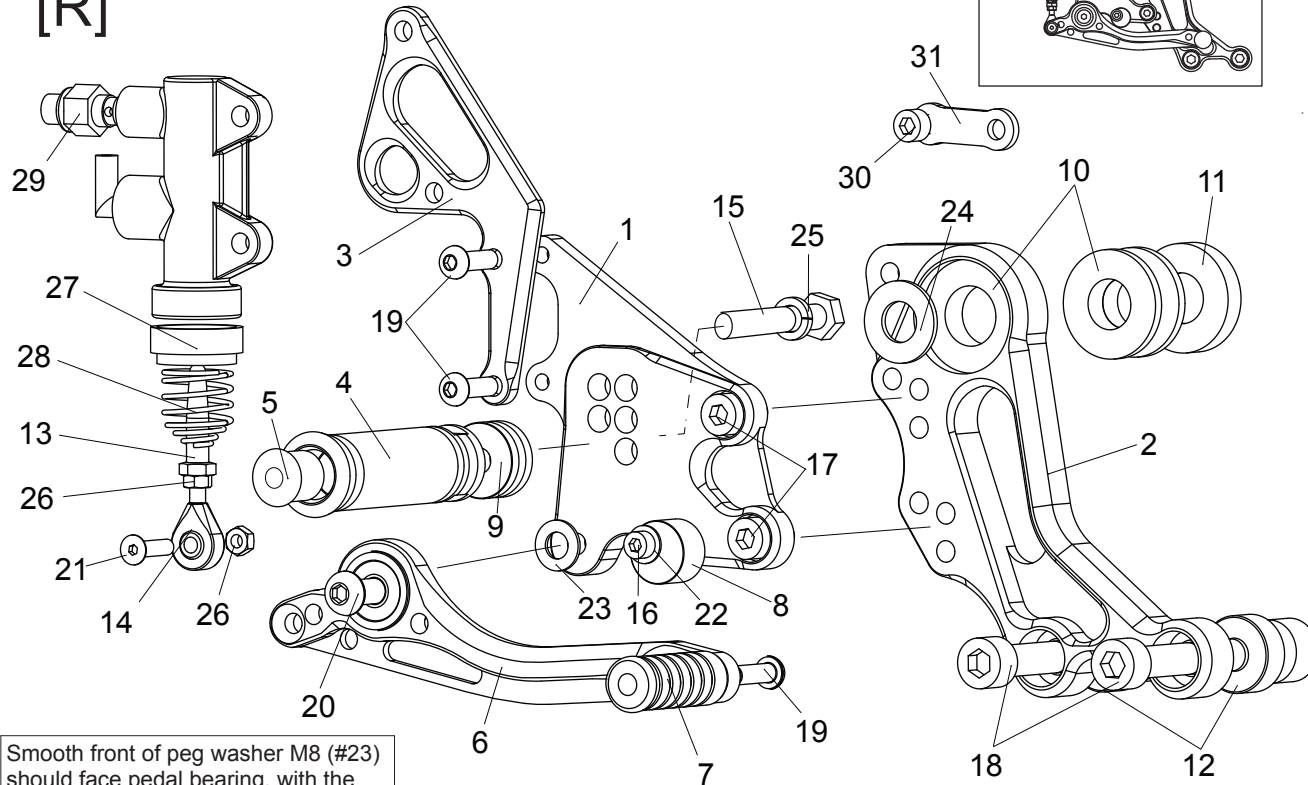
DUCATI MONSTER 796

REAR SETS (# D-M796RS)



P-1.0 brake light switch included.

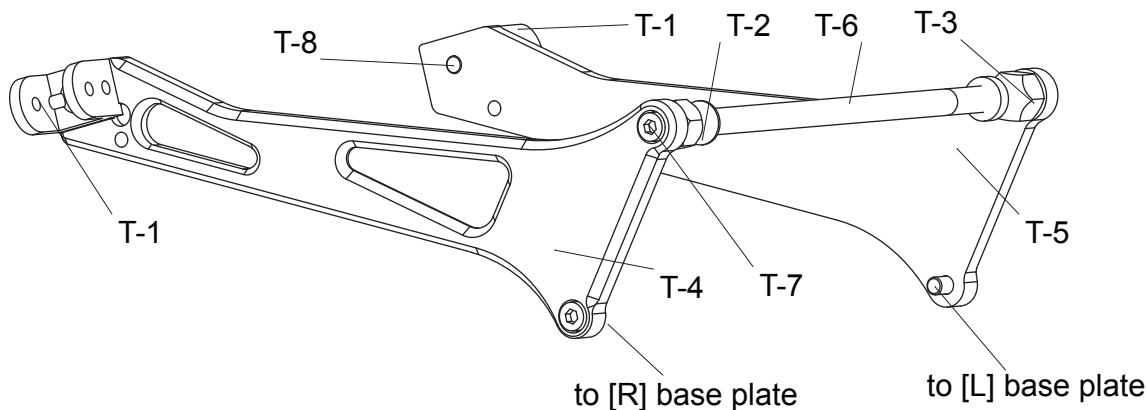
[R]



Smooth front of peg washer M8 (#23) should face pedal bearing, with the rougher, flat side facing step plate(#1).

1. STEP PLATE [R]
2. BASE PLATE [R]
3. HEEL GUARD [R](HG-21R)
4. FOOT PEG
5. FOOT PEG END CAP
6. BRAKE PEDAL 150-2(BPD-14)
7. PEDAL TIP DELRIN
8. BRAKE PEDAL STOPPER
9. FOOT PEG COLLAR 12
10. COLLAR 3.5(BK, PRE-INSTALLED) x2
11. COLLAR 7.5(BK)
12. COLLAR 33-10(BK) x2
13. PUSH ROD(for breombo)
14. MALE ROD END M5
15. HEX HEAD M8-40
16. SOCKET HEAD M5-25
17. SOCKET HEAD M8-16 x2
18. SOCKET HEAD M10-60(P-1.5) x2
19. BUTTON HEAD M6-20 x3
20. BUTTON HEAD M8-25
21. FLAT HEAD M5-20
22. WASHER M5
23. PEG WASHER M8
24. WASHER M12
25. SPLIT WASHER M8
26. NUT M5 x2
27. RETURN SPRING COLLAR(for breombo)
28. RETURN SPRING20
29. BRAKE LIGHT SWITCH P-1.0
30. SOCKET HEAD M6-10
31. UNIVERSAL BRACKET M6-25

TANDEM BRACKET(Optional)



- T-1. TANDEM HOLDER x 2
- T-2. HEX21 L30 M12-M8
- T-3. HEX21 L35 M12-M8
- T-4. TANDEM BRACKET [R]
- T-5. TANDEM BRACKET [L]
- T-6. BOLT M12-265mm
- T-7. SOCKET HEAD M8-16mm x 4
- T-8. BUTTON HEAD M8-16mm x 2

Due to running improvements in the designs of Sato parts, some new replacement parts may look somewhat different than the original parts with the same part #. These slight differences are mostly cosmetic and have no effect on performance.