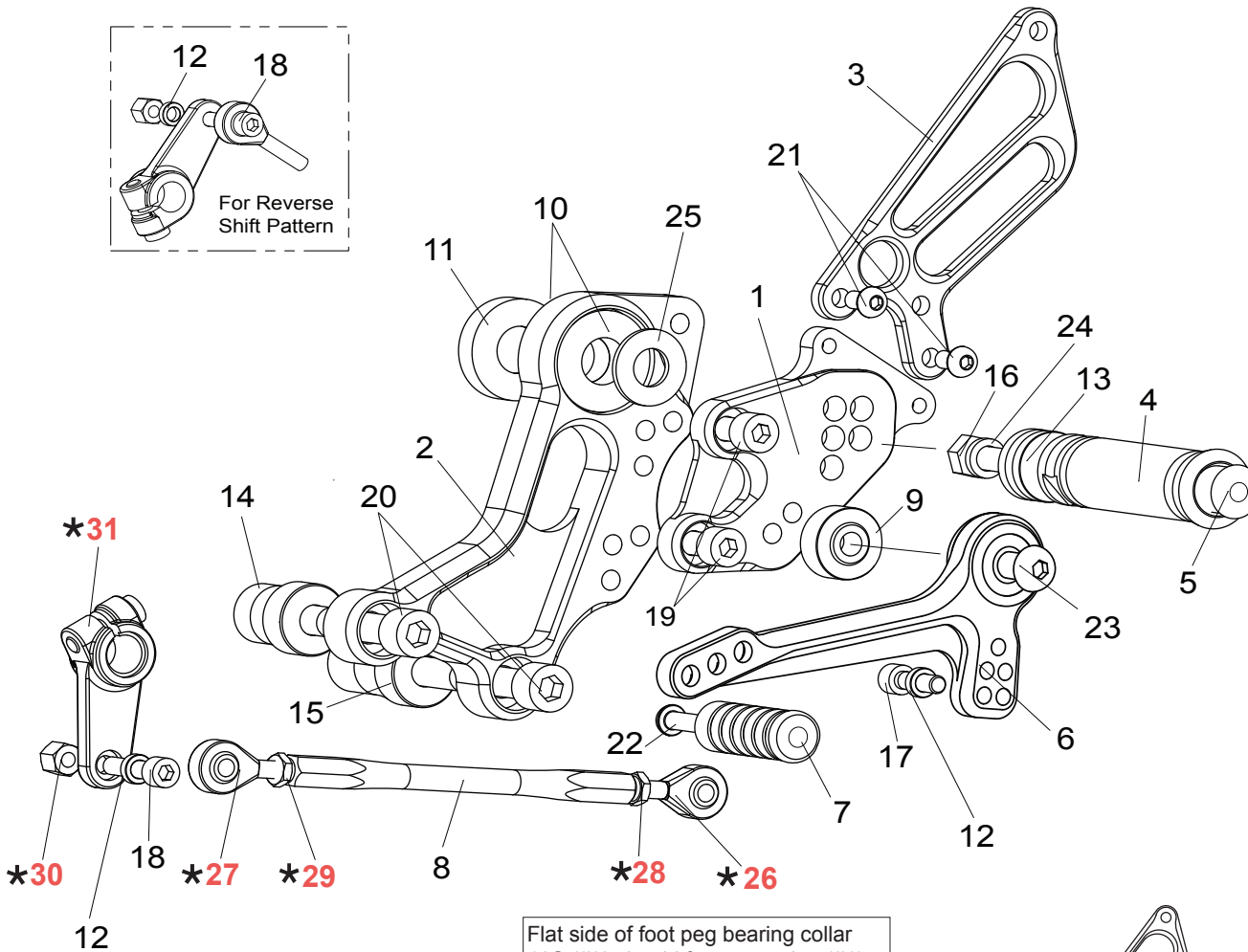
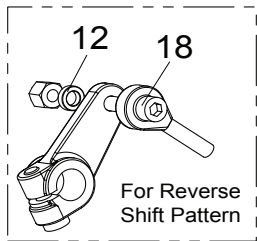


DUCATI MONSTER 796

REAR SETS (# D-M796RS)

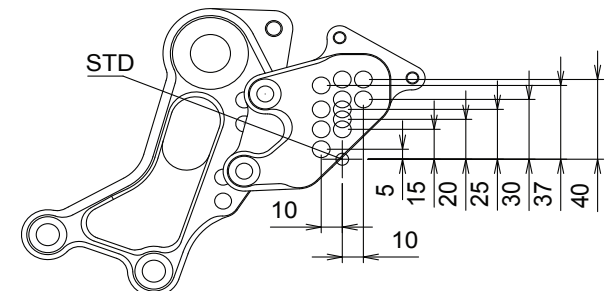
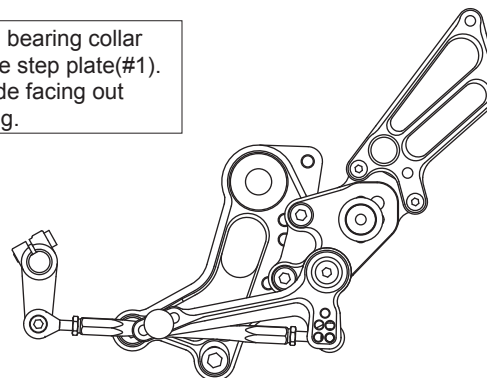


[L]



1. STEP PLATE [L]
2. BASE PLATE [L]
3. HEEL GUARD [L](HG-6L)
4. FOOT PEG
5. FOOT PEG END CAP
6. SHIFT PEDAL SPD-0912
7. PEDAL TIP DELRIN
8. SHIFT ROD 130
9. PEG BEARING COLLAR 10S(BK)
10. COLLAR 3.5 (BK, PRE-INSTALLED) x2
11. COLLAR 7.5(BK)
12. ROD END COLLAR 3 x2
13. FOOT PEG COLLAR 12
14. COLLAR 30-10(BK)
15. COLLAR 40-10(BK)
16. HEX HEAD M8-40
17. SOCKET HEAD M6-20
18. SOCKET HEAD M6-25
19. SOCKET HEAD M8-16 x2
20. SOCKET HEAD M10-65(P-1.5) x2
21. BUTTON HEAD M6-10 x2
22. BUTTON HEAD M6-20
23. BUTTON HEAD M8-35
24. SPLIT WASHER M8
25. WASHER M12
- * 26. ROD END M6 M6(DUCATI PARTS)
- * 27. ROD END M6 M6(DUCATI PARTS)
- * 28. NUT M6(DUCATI PARTS)
- * 29. NUT M6(DUCATI PARTS)
- * 30. LOCK NUT M6(DUCATI PARTS)
- * 31. SHIFT ARM(DUCATI PARTS)

Flat side of foot peg bearing collar 10S (#9) should face step plate(#1). With the stepped side facing out toward pedal bearing.



Due to running improvements in the designs of Sato parts, some new replacement parts may look somewhat different than the original parts with the same part #. These slight differences are mostly cosmetic and have no effect on performance.