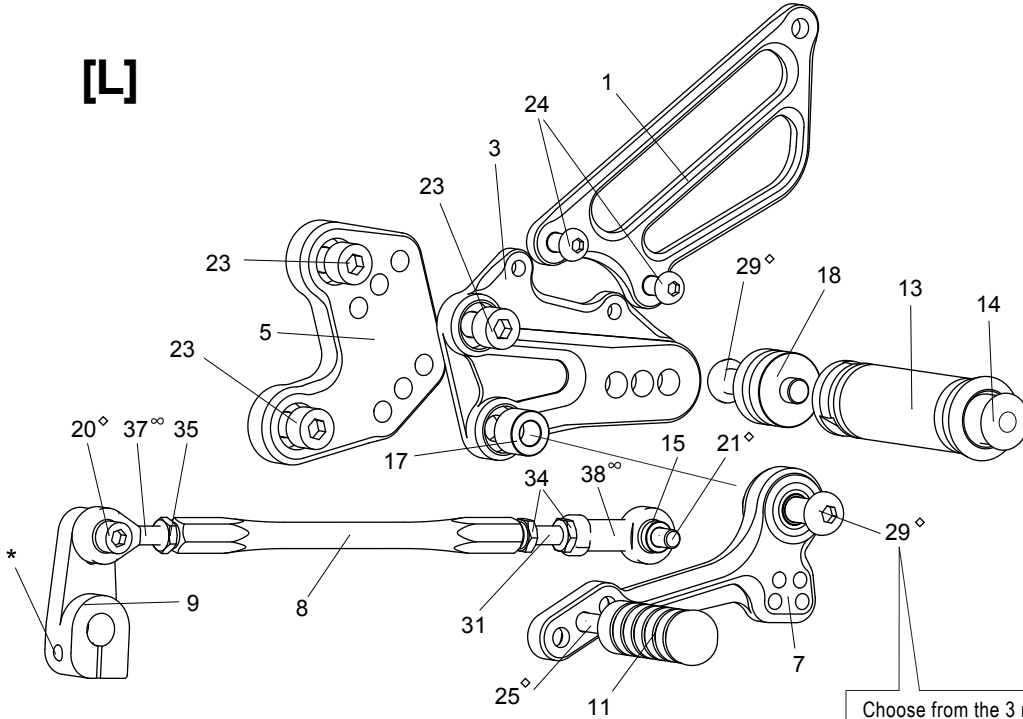


KAWASAKI ZX-14R ('12-) REAR SETS

part# K-ZX1412RS

[L]



[L] SIDE

1. HEEL GUARD [L] [HG-2L]
3. [L] STEP PLATE [K-ZX1412SP-L]
5. [L] BASE PLATE (BK) [K-ZX1412BP-L]
7. SHIFT PEDAL [SPD10]
8. SHIFT ROD 135 [SRD-135]
9. SHIFT ARM (BK) [CA-4]
11. PEDAL TIP (DELTRIN) [ST-001D]
13. FOOT PEG [PEG]
14. FOOT PEG END CAP [ST-002]
15. ROD END COLLAR 3 (GD) [RDED-CLR3]
17. COLLAR 10-8 [CLR-10-8]
18. PEG COLLAR 15 [PEGCLR-15]
20. SOCKET HEAD M6×18mm [SBT-M618]
21. SOCKET HEAD M6×20mm [SBT-M620]
23. SOCKET HEAD M8×15mm [SBT-M815] (x3)
24. BUTTON HEAD M6×10mm [BBT-M610] (x2)
25. BUTTON HEAD M6×20mm [BBT-M620]
29. BUTTON HEAD M8×40mm [BBT-M840]
31. STUD M6×45 [STUD-M6]
34. JAM NUT M6 [JNT-6] (x2)
35. REVERSE JAM NUT M6 [JNT-6L]
37. MALE REVERSE ROD END M6 [RDED-M6L]
38. FEMALE ROD END M6 [RDED-F6]

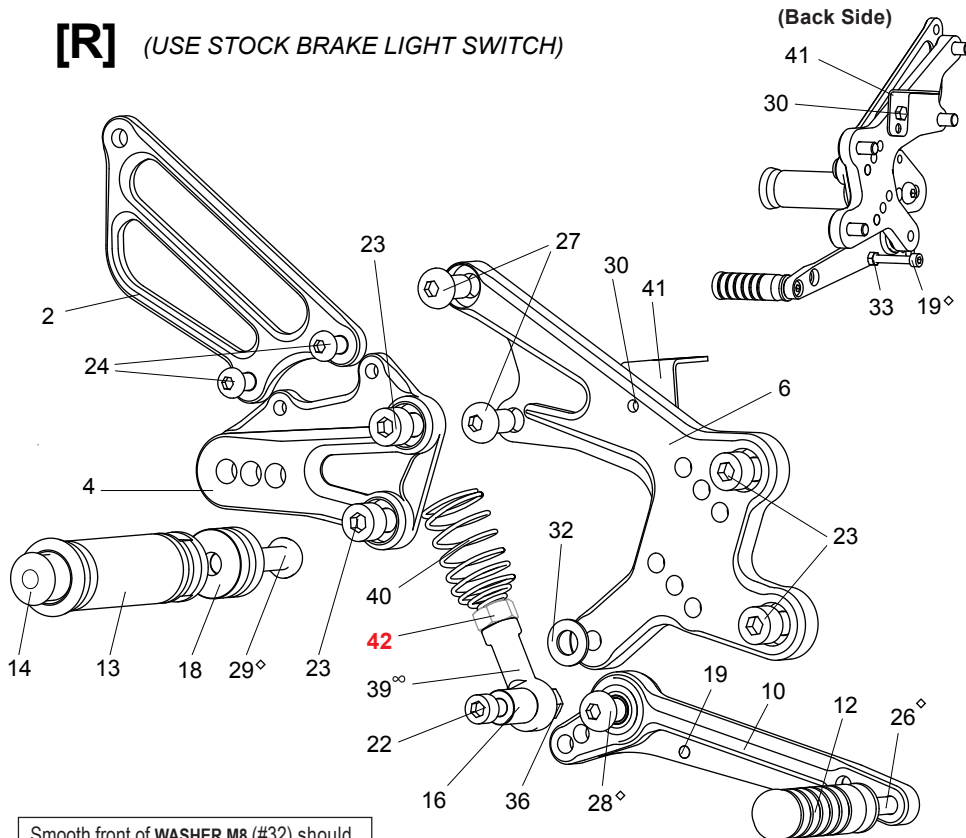
* Use Stock Bolt

◇ We recommend applying some threadlocker (such as Loctite or Vibra Tite) to these bolts. This should help prevent the parts from vibrating their way loose during a ride. (Some pre-assembled parts have already been Loctited)

∞ Lubricate rod ends regularly

Choose from the 3 mounting positions for the STEP PLATE (#3) on the BASE PLATE (#5), then apply some threadlocker to the SHIFT PEDAL bolt (#29) before final tightening.

[R] (USE STOCK BRAKE LIGHT SWITCH)



[R] SIDE

2. [R] HEEL GUARD [HG-2 [ST-002]R]
4. [R] STEP PLATE [K-ZX1412SP-R]
6. [R] BASE PLATE (BK) [K-ZX1412BP-R]
10. BRAKE PEDAL [BPD135b]
12. PEDAL TIP LONG (DELTRIN) [ST-001DL]
13. FOOT PEG [PEG]
14. FOOT PEG END CAP [ST-002]
16. ROD END COLLAR 15 (BK) [RDED-CLR15]
18. PEG COLLAR 15 [PEGCLR-15]
19. SOCKET HEAD M5×35mm [SBT-M535]
22. SOCKET HEAD M6×40mm [SBT-M640]
23. SOCKET HEAD M8×15mm [SBT-M815] (x4)
24. BUTTON HEAD M6×10mm [BBT-M610] (x2)
26. BUTTON HEAD M6×25mm [BBT-M625]
27. BUTTON HEAD M8×15mm [BBT-M815] (x2)
28. BUTTON HEAD M8×25mm [BBT-M825]
29. BUTTON HEAD M8×40mm [BBT-M840]
30. HEX HEAD M5×8mm [HBT-M58]
32. WASHER M8 [WS-8]
33. NUT M5 [NUT-5]
36. LOCK NUT M6 [LNT-6]
37. REVERSE STUD M6×45 [STUD-6L]
39. FEMALE ROD END 6-M8 [RDED-F6-8]
40. BRAKE RETURN SPRING 40 [RS-RSP]
41. PULL SWITCH STAY [PSTAY-16]
- 42. NUT (KAWASAKI PART)**

Smooth front of WASHER M8 (#32) should face pedal bearing, with the rougher, flat side facing BASE PLATE (#6).