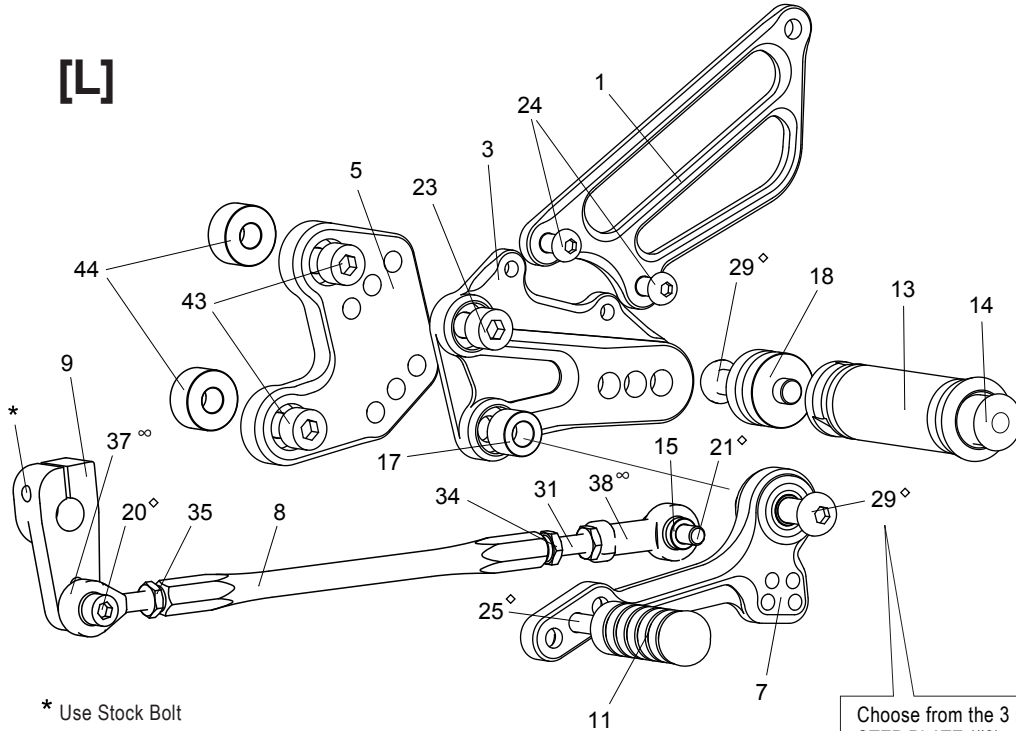


KAWASAKI ZX-14R ('12-) REVERSE SHIFT REAR SETS

part# K-ZX1412RSR

[L]



* Use Stock Bolt

◇ We recommend applying some threadlocker (such as Loctite or Vibra Tite) to these bolts. This should help prevent the parts from vibrating their way loose during a ride. (Some pre-assembled parts have already been Loctited)

∞ Lubricate rod ends regularly

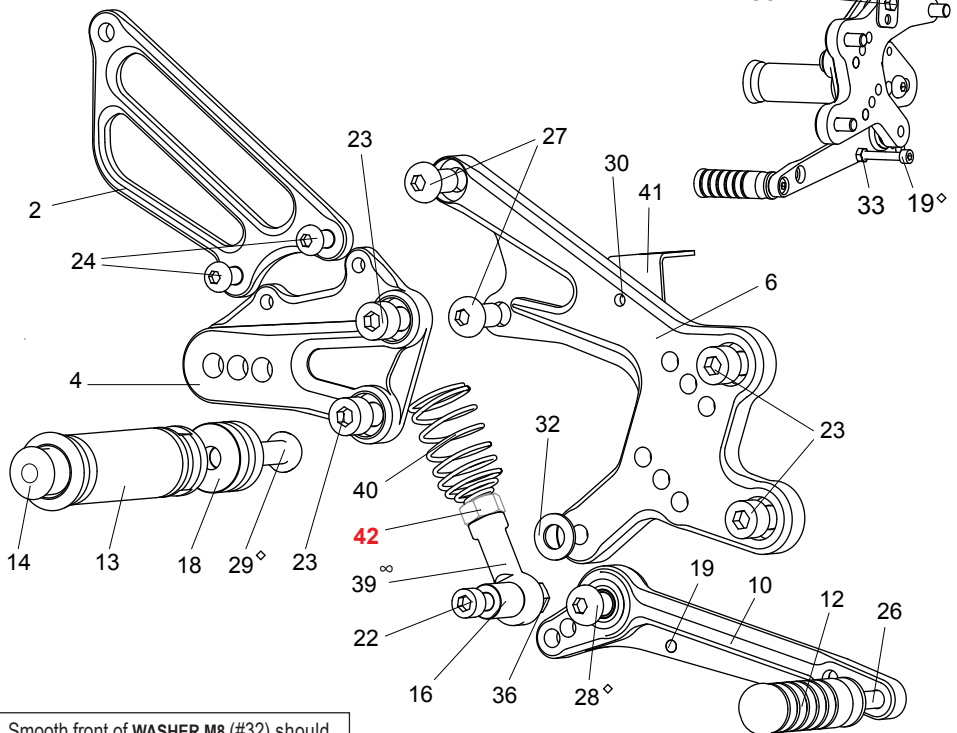
Choose from the 3 mounting positions for the STEP PLATE (#3) on the BASE PLATE (#5), then apply some threadlocker to the SHIFT PEDAL bolt (#29) before final tightening.

[L] SIDE

1. [L] HEEL GUARD [HG-2L]
3. [L] STEP PLATE [K-ZX1412SP-L]
5. [L] BASE PLATE (BK) [K-ZX1412BP-L]
7. SHIFT PEDAL [SPD10]
8. SHIFT ROD 150 [SRD-150]
9. SHIFT ARM (BK) [CA-4]
11. PEDAL TIP (DELRIN) [ST-001D]
13. FOOT PEG [PEG]
14. FOOT PEG END CAP [ST-002]
15. ROD END COLLAR 3 (GD) [RDED-CLR3]
17. COLLAR 10-8S(BK) [CLR10-8S]
18. PEG COLLAR 15 [PEGCLR-15]
20. SOCKET HEAD M6x18mm [SBT-M618]
21. SOCKET HEAD M6x20mm [SBT-M620]
23. SOCKET HEAD M8x15mm [SBT-M815]
24. BUTTON HEAD M6x10mm [BBT-M610] (x2)
25. BUTTON HEAD M6x20mm [BBT-M620]
29. BUTTON HEAD M8x40mm [BBT-M840]
31. STUD M6x45 [STUD-M6]
34. JAM NUT M6 [JNT-6] (x2)
35. REVERSE JAM NUT M6 [JNT-6L]
37. MALE REVERSE ROD END M6 [RDED-M6L]
38. FEMALE ROD END M6 [RDED-F6]
43. SOCKET HEAD M8x25mm [SBT-M825] (x2)
44. COLLAR 10-8(BK) [BPCLR-10] (x2)

[R] (USE STOCK BRAKE LIGHT SWITCH)

(Back Side)



[R] SIDE

2. [R] HEEL GUARD [HG-2R]
4. [R] STEP PLATE [K-ZX1412SP-R]
6. [R] BASE PLATE (BK) [K-ZX1412BP-R]
10. BRAKE PEDAL [BPD135b]
12. PEDAL TIP LONG (DELRIN) [ST-001DL]
13. FOOT PEG [PEG]
14. FOOT PEG END CAP [ST-002]
16. ROD END COLLAR 15(BK) [RDEDCLR-15]
18. PEG COLLAR 15 [PEGCLR-15]
19. SOCKET HEAD M5x35mm [SBT-M535]
22. SOCKET HEAD M6x40mm [SBT-M640]
23. SOCKET HEAD M8x15mm [SBT-M815] (x4)
24. BUTTON HEAD M6x10mm [BBT-M610] (x2)
26. BUTTON HEAD M6x25mm [BBT-M625]
27. BUTTON HEAD M8x15mm [BBT-M815] (x2)
28. BUTTON HEAD M8x25mm [BBT-M825]
29. BUTTON HEAD M8x40mm [BBT-M840]
30. HEX HEAD M5x8mm [HBT-M5]
32. WASHER M8 [WS-8]
33. NUT M5 [NUT-5]
36. LOCK NUT M6 [LNT-6]
37. REVERSE STUD M6x45 [STUD-M6L]
39. FEMALE ROD END 6-M8 [RDED-F6-8]
40. BRAKE RETURN SPRING 40 [RS-RSP]
41. PULL SWITCH STAY [PSTAY-16]
- 42. NUT (KAWASAKI PART)**

Smooth front of WASHER M8 (#32) should face pedal bearing, with the rougher, flat side facing BASE PLATE (#6).